

Alternate strobe controller New

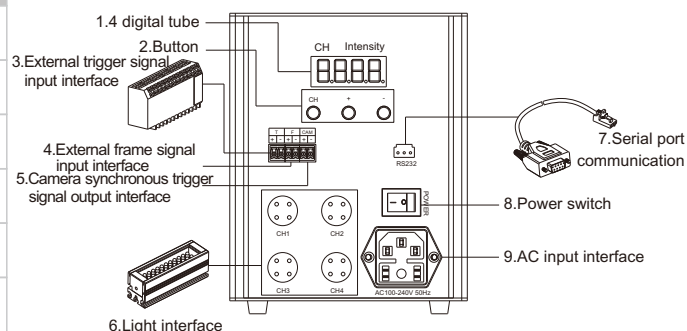
2DRC Series



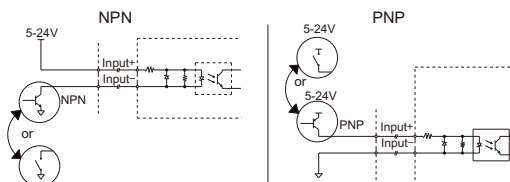
- ◆ Use with line scan light.
- ◆ Four channel light up the light alternately.
- ◆ Each channel lighting time 10us-68us adjustable.
- ◆ Fast shooting speed, theoretical speed can reach 80K.
- ◆ Lighting channel can be optional.
- ◆ Communication by RS232 and PC.
- ◆ Power off saving and short-circuit protection function.

→ Control panel specification <LTS-2DRC24200-4S>

No.	Parameter	Specification
1	4 digital tube	Channel number and lighting time display
2	Button	Lighting time adjusting
3	External trigger signal input interface	Input external trigger signal, to control the light strobing
4	External frame signal input interface	The other function of controller are available when the frame signal is high level
5	Camera synchronous trigger signal output interface	The 5V output pulse signal is synchronized with the output signal of the light
6	Light interface	Connect the light
7	Serial port communication	Connect to PC, remote operate controller
8	Power switch	On/ off controller power
9	AC input interface	Input AC 100-240V



→ Wire connection method of the external trigger signal



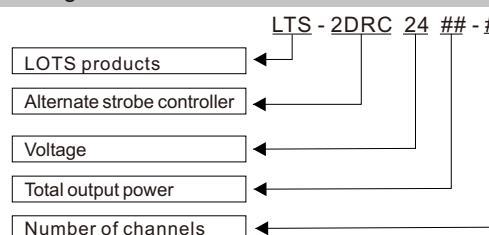
→ Input wire connection method of the external trigger signal

2DRC series controller is rising edge trigger, external frame signal F input (5-24V) high level and trigger signal T input (5-24V), the light output is available.

T	F	CAM
+	+	+
-	-	-

Remark: T(+ -) is external trigger signal input interface, input 5-24V high level, the rising edge is available. F(+ -) is external frame signal input interface, input 5-24V high level, the rising edge is available. CAM(+ -) output 5V pulse signal interface, use for camera trigger, synchronous with external input trigger signal and light output signal, time delay <2.5us.

→ Coding Rule



Connection step:

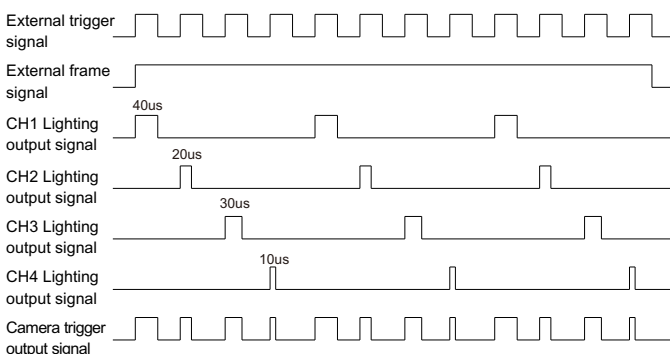
Step 1: connected the light and controller (Reference to the picture on the right).

Step 2: external trigger signal connected to external trigger signal input interface of controller, external frame signal connected to external frame signal input interface of controller, camera synchronous trigger signal connected to camera synchronous trigger signal interface of controller.

Step3: Connect the serial port with PC when the serial port needed.

Step 4: connect power (AC100-240V 1.5A), press the red switch "-", indicator light up, "o" uplifted, power on.

→ Sequence chart



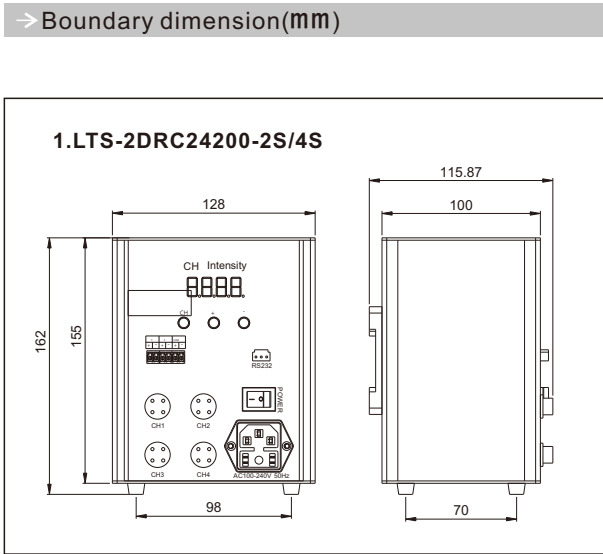
<http://www.lotsmv.com>

Alternate strobe controller

2DRC Series

→ Controller model								
Product	Model	Output voltage range	Total output power	One way Max. output power	Number of channels	Dimen-sion	Extenal trigger voltage	Remark
Alternate strobe controller	LTS-2DRC24200-2S	24V	200W	200W	2	1	5-24V rising edge trigger	Have digital tube display and trigger function
	LTS-2DRC24200-4S	24V	200W	200W	4	1		

→ Parameters		
Item	LTS-2DRC24200-2S/4S	Remark
Number of channels	2、4 way	
Input voltage	AC 100-240V	
Input frequency range	50/60Hz	
Output voltage	24V	
Working mode	alternate trigger mode	
Luminance control method	manual adjust by button, PC remote adjustion	
Luminance control mode	constant voltage	luminance can't be adjusted, only can adjust lighting time
Lighting time	10-68us	
Baud rate	19200bps	
Communication	RS232 serial port	
Trigger signal	rising edge trigger	
Lighting time delay	<2.5us	



Line scan illumination	3LINH
	3LINL
	3LIN
	2LINS
	2LIN
Structured light	2COXL
	2LINM
	SDL
	STL
	RN
Ring illumination	RNH
	SRN
	HPR
	FPR
	DML
Shadowless illumination	LFR
	3DM
	2DM
	LFX
	FPQ
Bar illumination	RIH
	DL
	3BRH
	2BR
	2BRS
Coaxial illumination	2BRM
	3COH
	3CON
	COXR
	3COX
Multi-angle illumination	COPA
	HSL
	2SL
	SL
	RNMU
Back illumination	AOI
	2FTB/2FTR
	FTC
	2FT/3FT
	2PFT/3PFT
Waterproof illumination	LIP
	IP
Infrared light	IR
	UV
Ultraviolet light	UV
	Customized
Customized	Customized
	PS
	PD
	2DRC
	3STU
Controller	APC
	DPC
	2APC
	DPA
	2ACC
Lenses	2DPC
	Area scan
	Line scan

