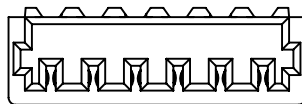
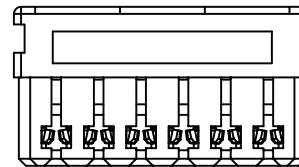
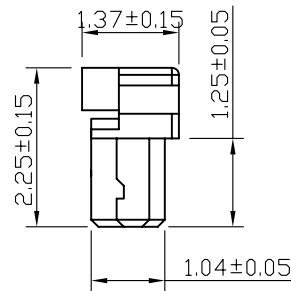
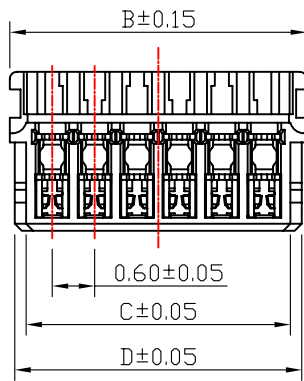
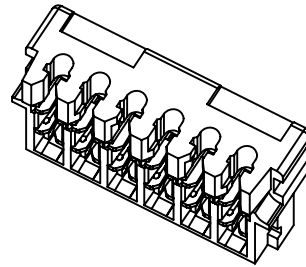
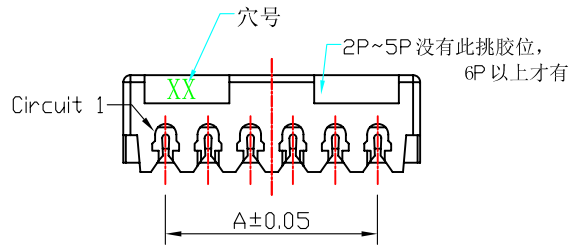


ROHS



Specifications :

- Voltage rating: 30V AC/DC
- Current rating: 0.2A AC/DC
- Withstanding voltage: 200V AC/minute
- Temperature range: -25° C ~ +85° C
- Insulation resistance: ≥100M Ω
- Contact resistance: ≤30m Ω
- Wire Range: 36AWG OD:0.28mm
- 34AWG OD:0.32MM
- Plastic material: LCP UL 94V-0
- Terminal material: Phosphor Bronze
- Finish: Gold flash

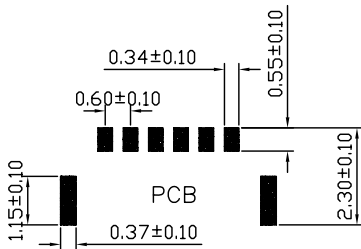
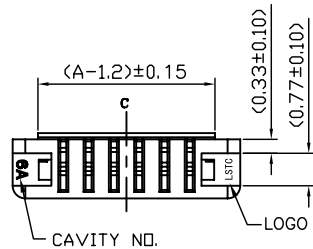
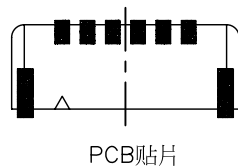
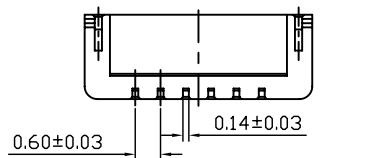
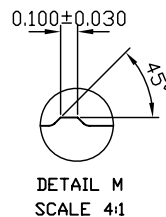
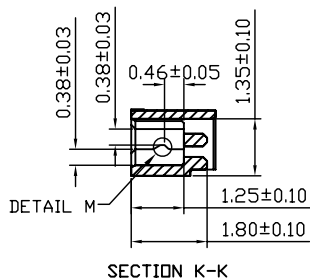
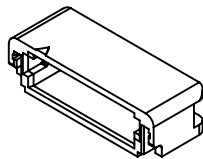
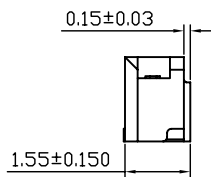
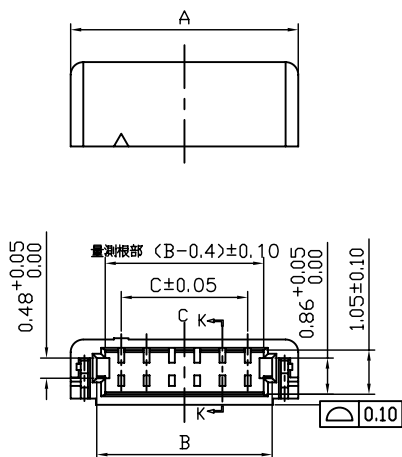
0600 W XX 4 1 1 00
 ① ② ③ ④ ⑤ ⑥ ⑦

- ①Series:
- ②Category: W-Wire B-Board
- ③Circuit number: XX PIN
- ④Plastic material and color:
4-Black LCP
- ⑤Terminal material & finish:
1-Gold-plated Phosphor bronze
- ⑥Finish specification: 1-1U"
- ⑦Special code:

Poles	Dimensions				Poles	Dimensions			
	DIM A	DIM B	DIM C	DIM D		DIM A	DIM B	DIM C	DIM D
02	0.60	1.80	1.34	1.66	10	5.40	6.60	6.14	6.46
03	1.20	2.40	1.94	2.26	11	6.00	7.20	6.74	7.06
04	1.80	3.00	2.54	2.86	12	6.60	7.80	7.34	7.66
05	2.40	3.60	3.14	3.46	13	7.20	8.40	7.94	8.26
06	3.00	4.20	3.74	4.06	14	7.80	9.00	8.54	8.86
07	3.60	4.80	4.34	4.66	15	8.40	9.60	9.14	9.46
08	4.20	5.40	4.94	5.26	16	9.00	10.20	9.74	10.06
09	4.80	6.00	5.54	5.86					

				GENERAL TOLERANCE	Part NO:								
2016/02/25		B	Change to the new version	ZLY	0600WXX41100								
2015/05/22		A			TITLE:								
DATA		EDITION	DESCRIPTION	DRAW	PROJECT				APPROVED	CHECK	DRAW	DATA	FILE NUMBER
					UNIT	SCALE	PAGE	EDITION	Eis	KHM	ZLY	2016/02/25	
					MM	1:1	1 OF 1	A					

HF



■ Specifications:

- Voltage rating: 30V AC / DC
- Current rating: 0.2A AC/DC
- Withstanding voltage: 200V AC/minute
- Temperature range: -25° C ~ +85° C
- Insulation resistance: ≥100MΩ
- Contact resistance: ≤30mΩ
- Plastic material: LCP UL 94V-0
- Terminal material: Phosphor bronze
- Finish: Gold-Plated

0600 B XX 4 1 1 00

- ①Series:
- ②Category: W-Wire B-Board
- ③Circuit number: XX PIN
- ④Plastic material and color:
4-Black LCP
- ⑤Terminal material & finish:
1-Gold-plated Phosphor bronze
- ⑥Finish specification: 1-1U"
- ⑦Special code:

Poles	Dimensions			Poles	Dimensions		
	A	B	C		A	B	C
02	3.00	1.76	0.60	10	7.80	6.56	5.40
03	3.60	2.36	1.20	11	8.40	7.16	6.00
04	4.20	2.96	1.80	12	9.00	7.76	6.60
05	4.80	3.56	2.40	13	9.60	8.36	7.20
06	5.40	4.16	3.00	14	10.20	8.96	7.80
07	6.00	4.76	3.60	15	10.80	9.56	8.40
08	6.60	5.36	4.20	16	11.40	10.16	9.00
09	7.20	5.96	4.80				

				GENERAL TOLERANCE	Part NO:										
				.X ±0.3	0600BXX41100										
2016/02/25				B	Change to the new version				ZLY				TITLE:		
2015/05/22				A									XXP 0.6mm WTB SMT/A Type Black		
DATA				EDITION	DESCRIPTION				DRAW	PROJECT	APPROVED	CHECK	DRAW	DATA	FILE NUMBER
											Eis	KHM	ZLY	2015/05/22	



UNIT: MM, SCALE: 1:1, PAGE: 1 OF 1, EDITION: B