



无机水磨石

Inorganic Terrazzo





威洋无机水磨石

Wayon Inorganic Terrazzo



威洋全球，品质如一。

四十多年来，威洋时刻秉承着“诚信与品质”的经营理念，为各种各样的消费者提供了千千万万的石材产品。目前，威洋石材已经成为拥有自有矿山、研发中心以及广东威洋实业、佛山威洋殿堂级展厅、云浮威洋、上海威洋、江苏威洋、广州威洋、新新石材专业工程配套中心等众多分支机构的大型企业集团。

传统的现浇水磨石因为其制作工艺简单，施工困难的原因，存在容易损坏、颗粒分布不均匀、泛白反碱等问题。而威洋无机预制水磨石，不仅保留了水磨石的无机物特性，并且拥有高抗压抗折强度、低吸水率、施工铺贴简单、款色稳定多样等优点，更加适合现代社会建筑的需求。

Wayon Stone - Quality All The Way.

For over 40 years, inspired by its business philosophy of "integrity and quality", Wayon is proud of serving thousands of consumers with a variety of quality stones. At present, WAYON STONE is established as a large stone group with its own quarries, R&D center and many branches across China, including Guangdong Wayon Industry, Foshan Wayon Exhibition Hall, Shanghai Wayon, Jiangsu Wayon, Yunfu Wayon, Guangzhou Wayon, C-Stone Engineering supporting center and so on.

Because of the simple process and difficult construction, the traditional terrazzo has some problems such as low hardness, high water absorption and less color. Wayon Inorganic Terrazzo not only retains the inorganic properties of terrazzo, but also has the advantages of high particle strength, low water absorption, simple construction and variety of colors. It is more suitable for the current concept of building.

无机石特性

Inorganic Stone Characteristic

威洋无机石含有天然石英质类原材料可达60%以上，采用环保型无机粘接剂、无机颜料，不含树脂、胶水等有机成分，通过高频高压震动压制成型。骨料含量更高、产品莫氏硬度高，耐磨耐刮花，效果保持更加长久。不含树脂等有机成分，原材料均为不燃、耐燃材质，产品达国际A级耐火标准，且高温下不易变形，不产生有害气体，安全环保。

Wayon inorganic stone contains up to 60% natural quartz-like raw materials. It's made of environment-friendly inorganic adhesives, inorganic pigments, and does not contain organic components such as resin glue. It is formed by high frequency and high pressure vibration.

It has a high aggregate content and high mohs hardness, wear resistance and scratch resistance, making the product more durable.

Without resin and other organic components, the raw materials are non-combustible and non-flammable materials, the product reaches the international a-class fireproof standard, and is not easy to deform under high temperature, does not produce harmful smoke, it's safe and environmentally friendly.



高硬度

体积密度和莫氏硬度高，具有良好的耐磨性。



高抗压、抗折强度

高抗压强度，高抗折强度。可适用于荔枝面处理和45度角拼接等加工工艺。



持久耐用

高耐火性、抗冰冻，抗酸抗腐蚀性化学物品。抗污能力强，防雨水，盐雾腐蚀。



持久靓丽

产品拥有一定的油润性，光泽度高。抗紫外线强，户外不容易变色褪色，不易变形。



图案丰富，绿色环保

可定制调色与纹理，勾画独特空间。不含树脂，不易变形，不产生有毒物质。



低吸水性

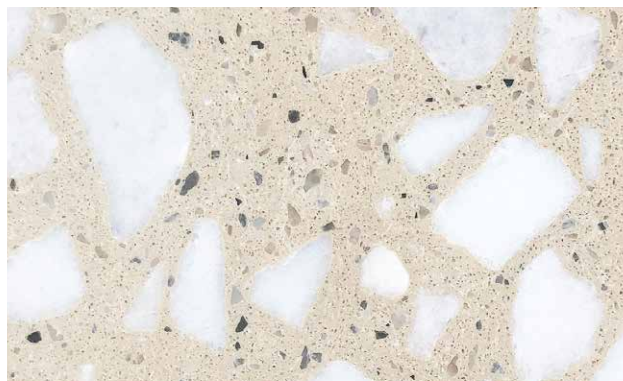
极低吸水率，可大幅度减少反碱现象。适用于室外内墙地板，厨卫台面等领域。



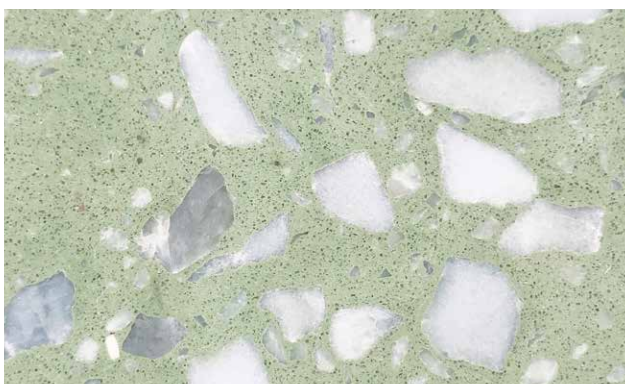
江苏BOLO游泳俱乐部 - WT241 华伦天奴灰 Valentino Grey



白石粉红 Shiraishi Pink
WT276



白石米黄 Shiraishi Beige
WT274



苍松翠绿 Pines Green
WT277



松香淡黄 Rosin Light Yellow
WT275



岩山宝玉 Iwayama Jade
WT278



新天地灰 Sunday Grey
WT265



湖泊 Lake
WT602



山石 Hillstone
WT603



绿茵 Green Grass
WT605



暖阳 Warm Sunshine
WT606



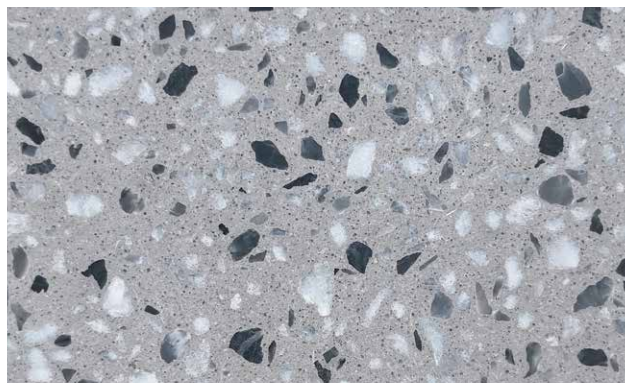
月光 Moonlight
WT607



田园 Pastora
WT608



喜悦灰 Joey Grey
WT273



拜伦灰 Byron Grey
WT257



细麻红棕 Linen Brown
WT140



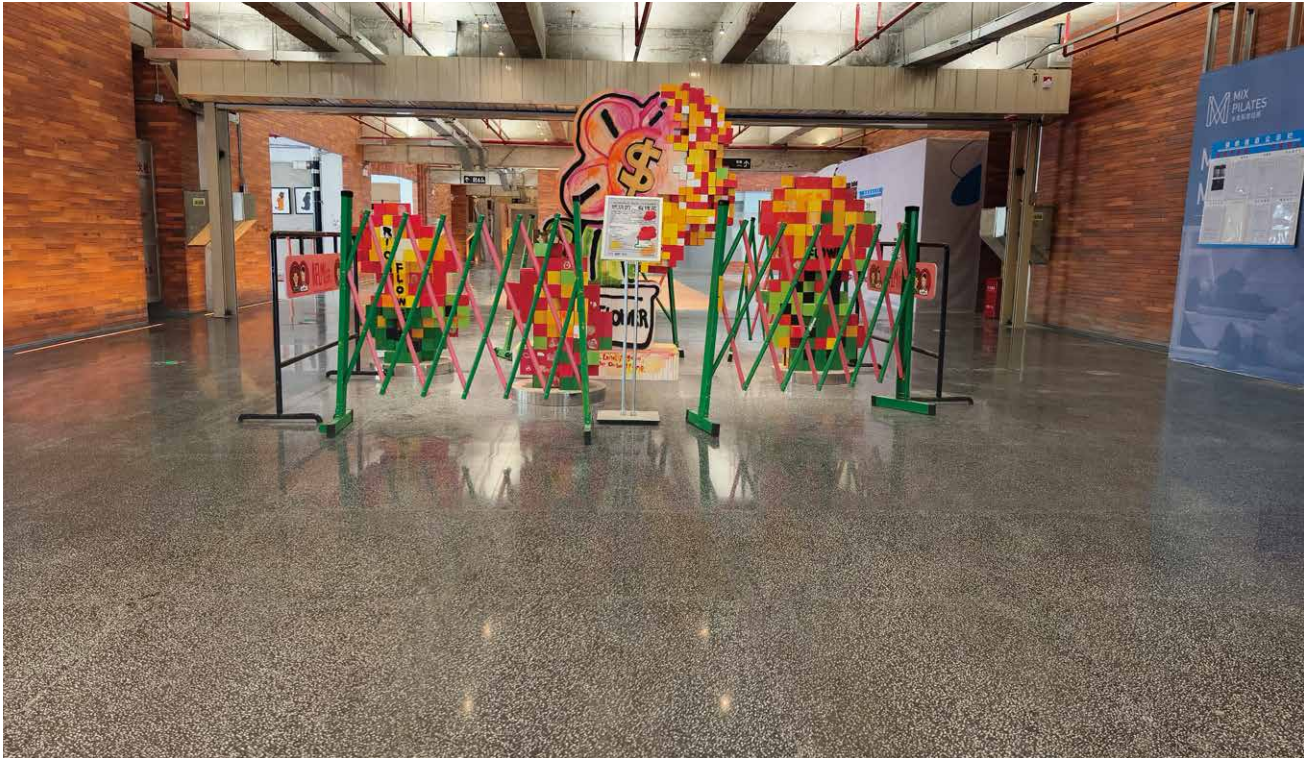
细麻中灰 Linen Medium Grey
WT141



星罗浅灰 Seira Light Grey
WT142

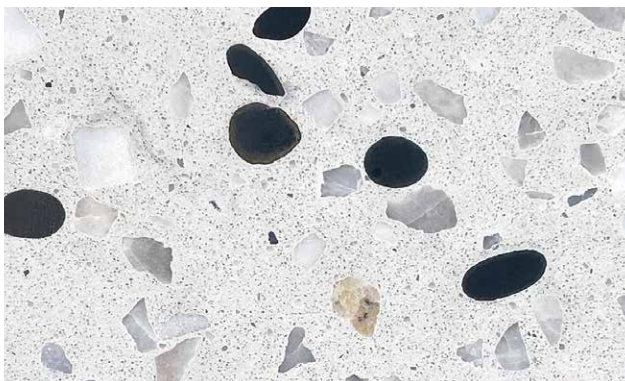


细麻灰 Linen Grey
WT137



深圳A Park创意公园 – WT264 新天地深灰 Sunday Dark Grey / WT278 岩山宝玉 Iwayama Jade

无机水磨石 Inorganic Terrazzo



罗马斑鹿 Roman Chital
WT280



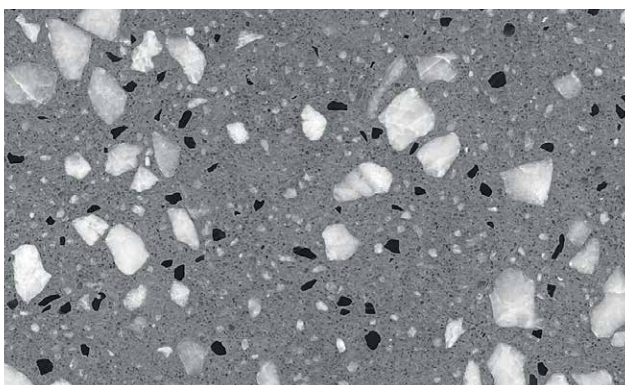
索菲尼亚 Sofia Light Grey浅灰
WT145



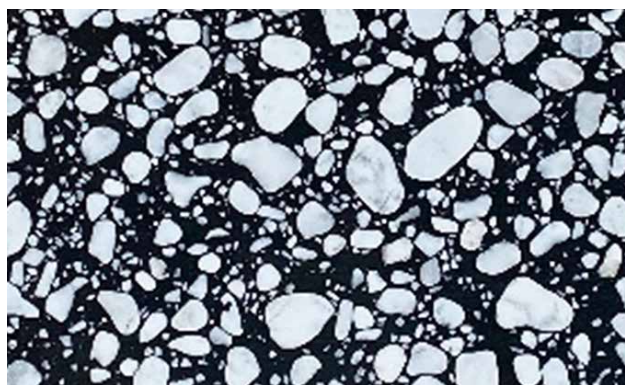
苍绿彩珀 Succin Green
WT282



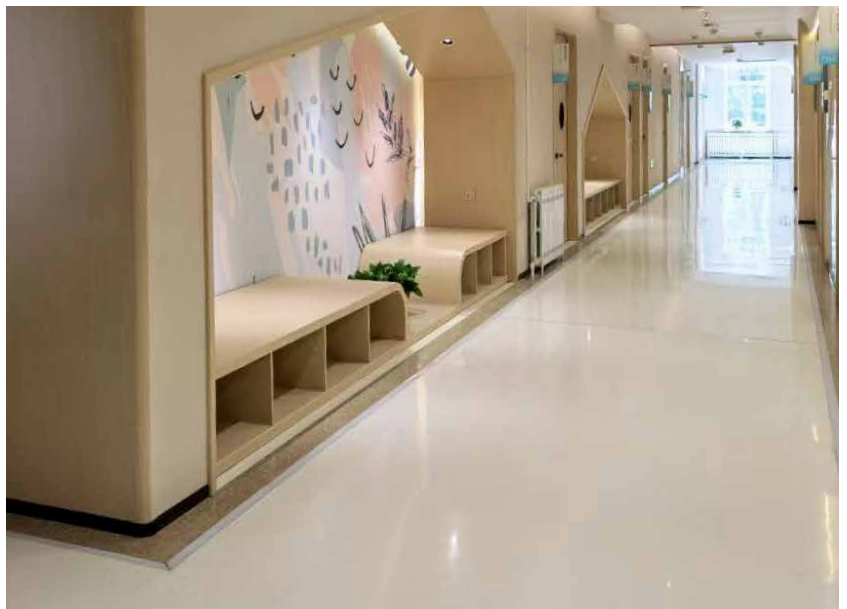
细麻墨绿 Linen Dark Green
WT144



岩山烟晶 Iwayama Cairngorm
WT279



东方明珠 Oriental Pearl
WT501



兰州大学健康管理中心 – WT144 细麻墨绿 Linen Dark Green / WT143 云山皓白 Summit Pale White



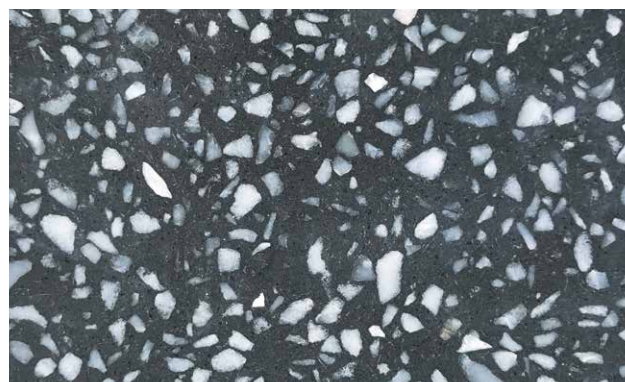
银装白II Ice White II
WT225-2



拜伦白 Byron White
WT258



云山素白 Summit Pure White
WT134



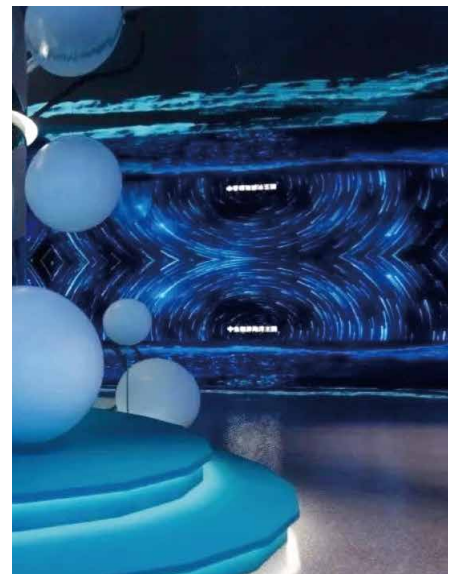
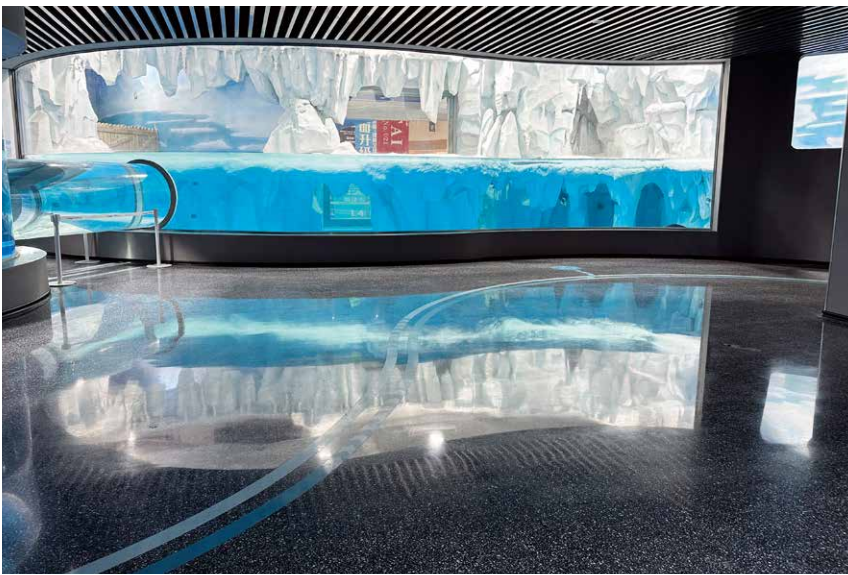
新天地深灰 Sunday Dark Grey
WT264



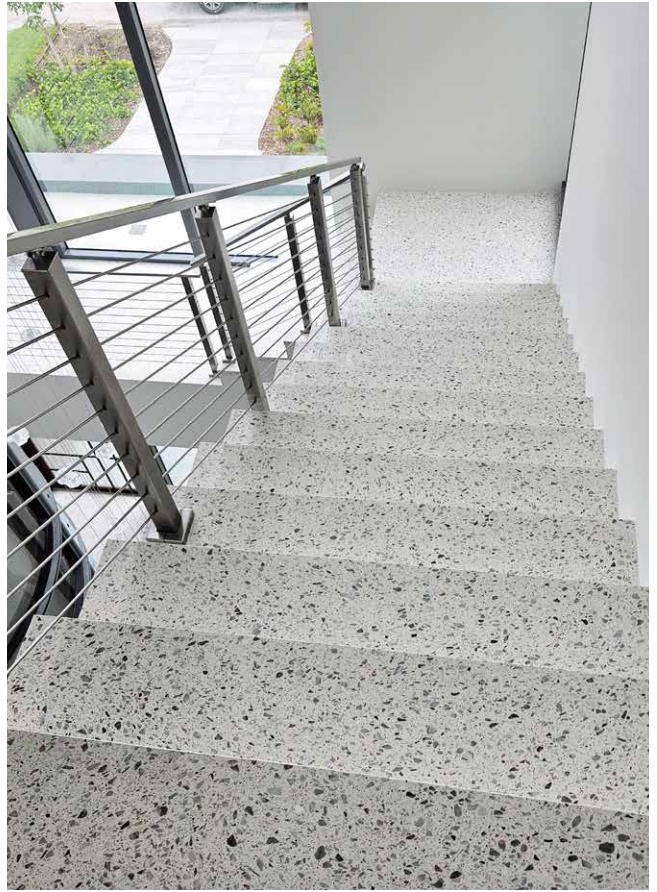
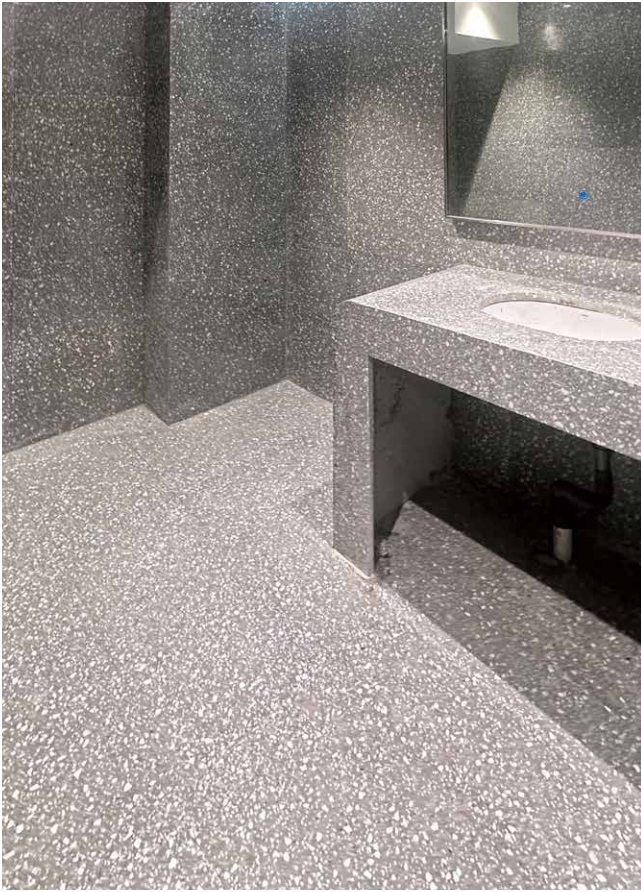
细麻深灰 Linen Dark Grey
WT138



炭晶黑 Carbon Black
WT269



厦门中鱼视界海洋王国



适用领域 / Application Fields

因为威洋无机水磨石耐磨、耐火、光泽度高、吸水率低等优点，使威洋无机水磨石除了可以广泛应用于室内外墙身、地面、厨房、卫生间等领域外，还能适用于大型商场、品牌专卖店、高端餐厅及市政工程建设等各种建筑。

With its advantages of high abrasion, fire resistance, gloss and low water absorption, Wayon Inorganic Terrazzo can be used for indoor and outdoor wall & floor, kitchen and bathroom, as well as shopping malls, brand shop, restaurants, municipal constructions and so on.



云山皓白 Summit Pale White
WT143



银装米白 Ice Rice White
WT281



漫天灰白 Sky Grey White
WT131



冰钻白石 Diamond Ice
WT240



漫天灰 Sky Grey
WT132



新天地白 Sunday White
WT136



星罗米白 Seira White
WT123



星罗白玉 Seira White Jade
WT130



广州双鱼体育用品集团大楼 - WT281 银装米白 Ice Rice White



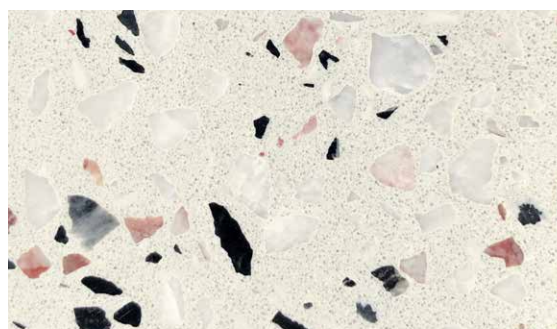
卡娜白 Kala White
WT267



拜伦金 Byron Gold
WT266



罗马茶花 Roman Camellia
WT243



罗马粉白 Roman Pink-white
WT242



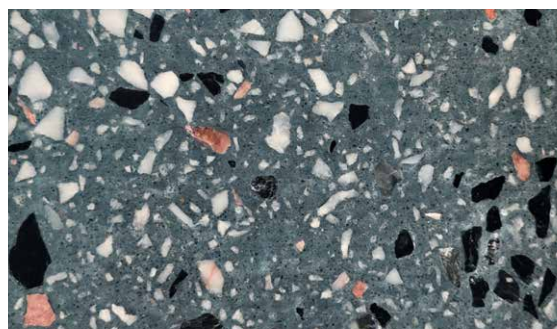
罗马彩珀 Roman Color Amber
WT252



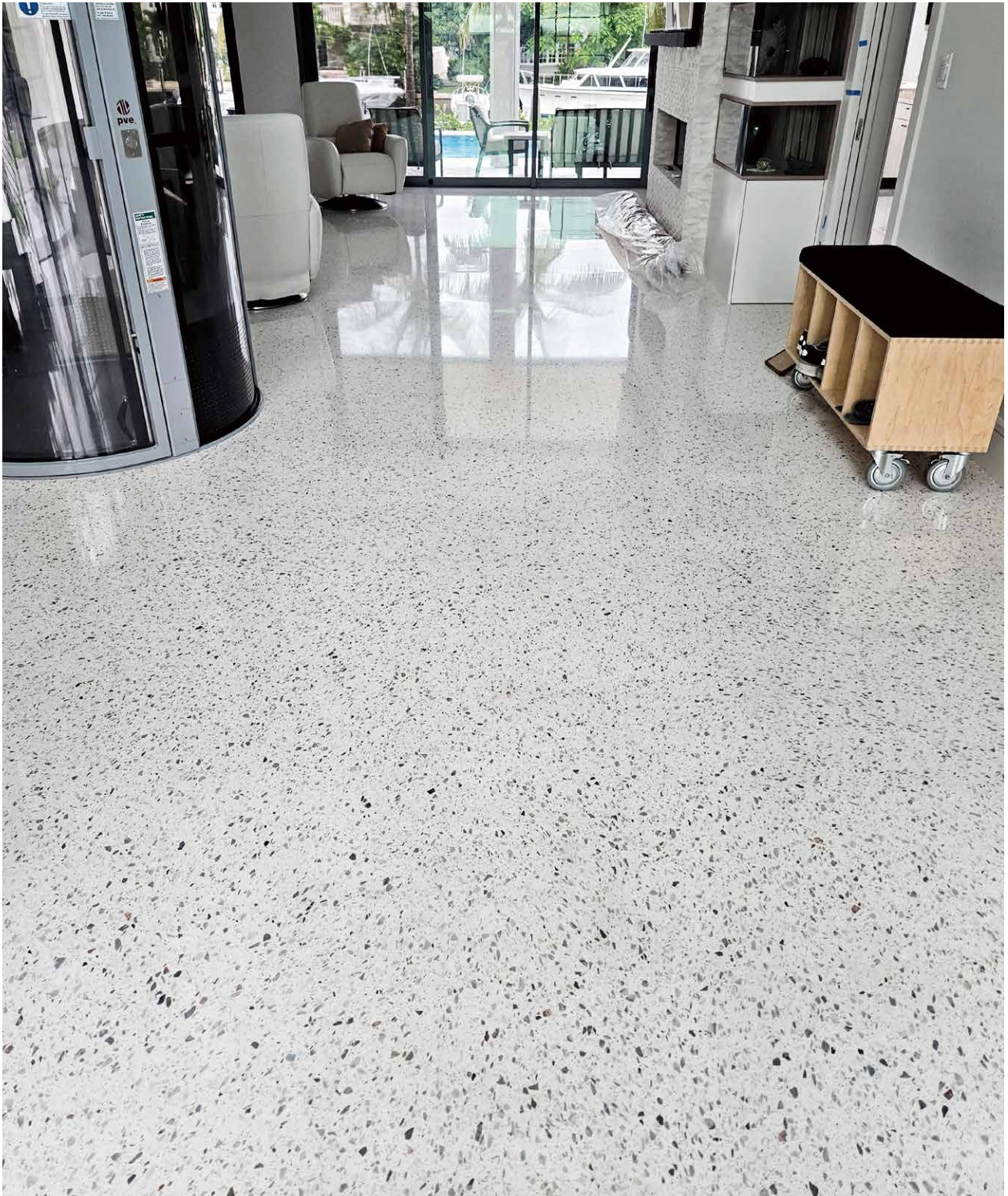
罗马粉红 Roman Pink
WT250



星罗米黄 Seira Yellow
WT118



星罗蓝 Seira Blue
WT121



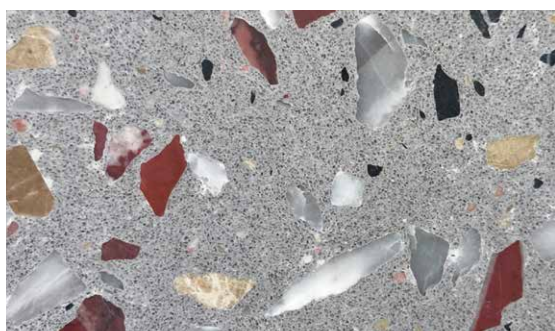
美国海滨度假别墅项目



细麻浅灰 Linen Light Grey
WT139



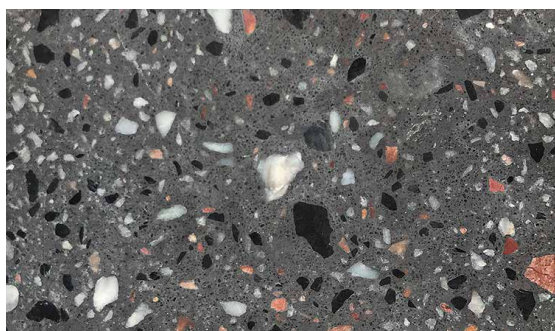
华伦天奴灰 Valentino Grey
WT241



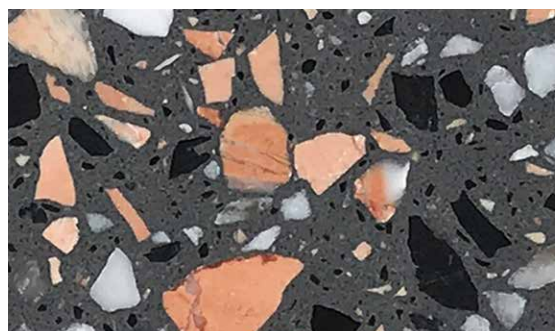
岩山彩花 Iwayama Acantholimon
WT263



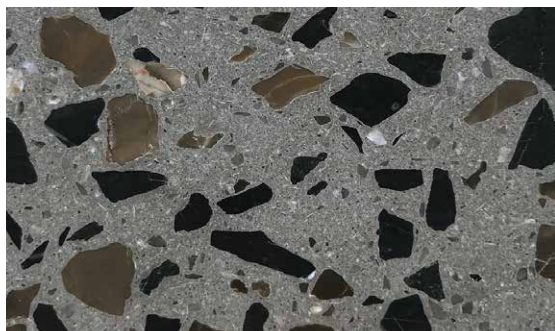
岩山浅灰 Iwayama Grey
WT210



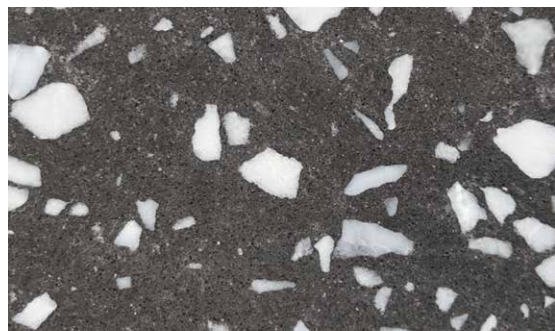
星罗青灰 Seira Grey
WT119



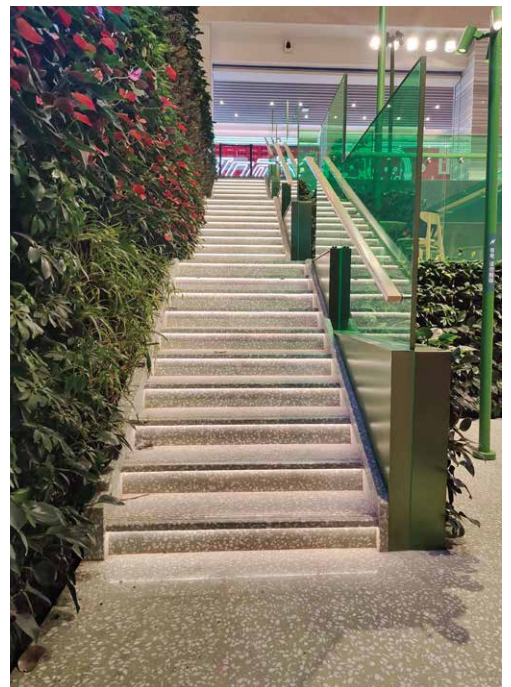
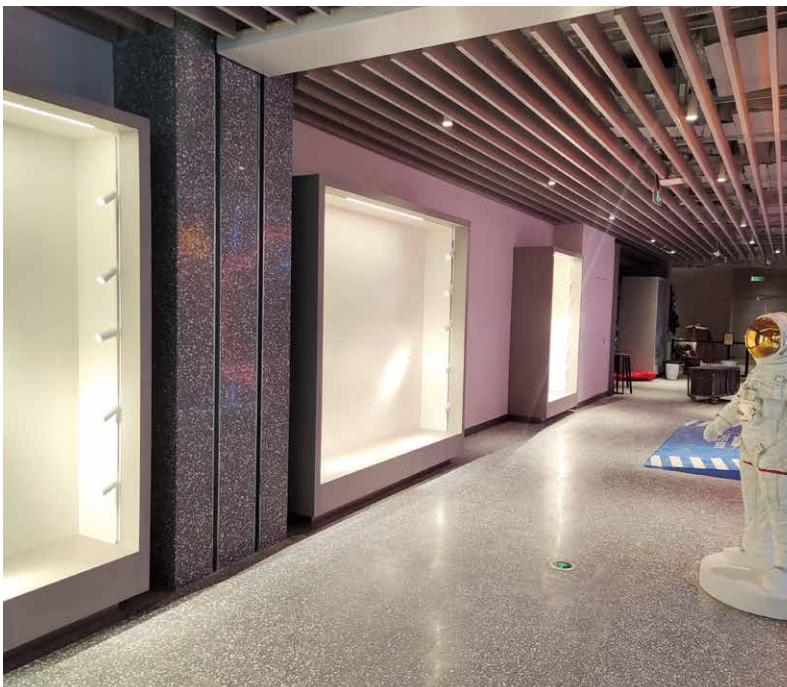
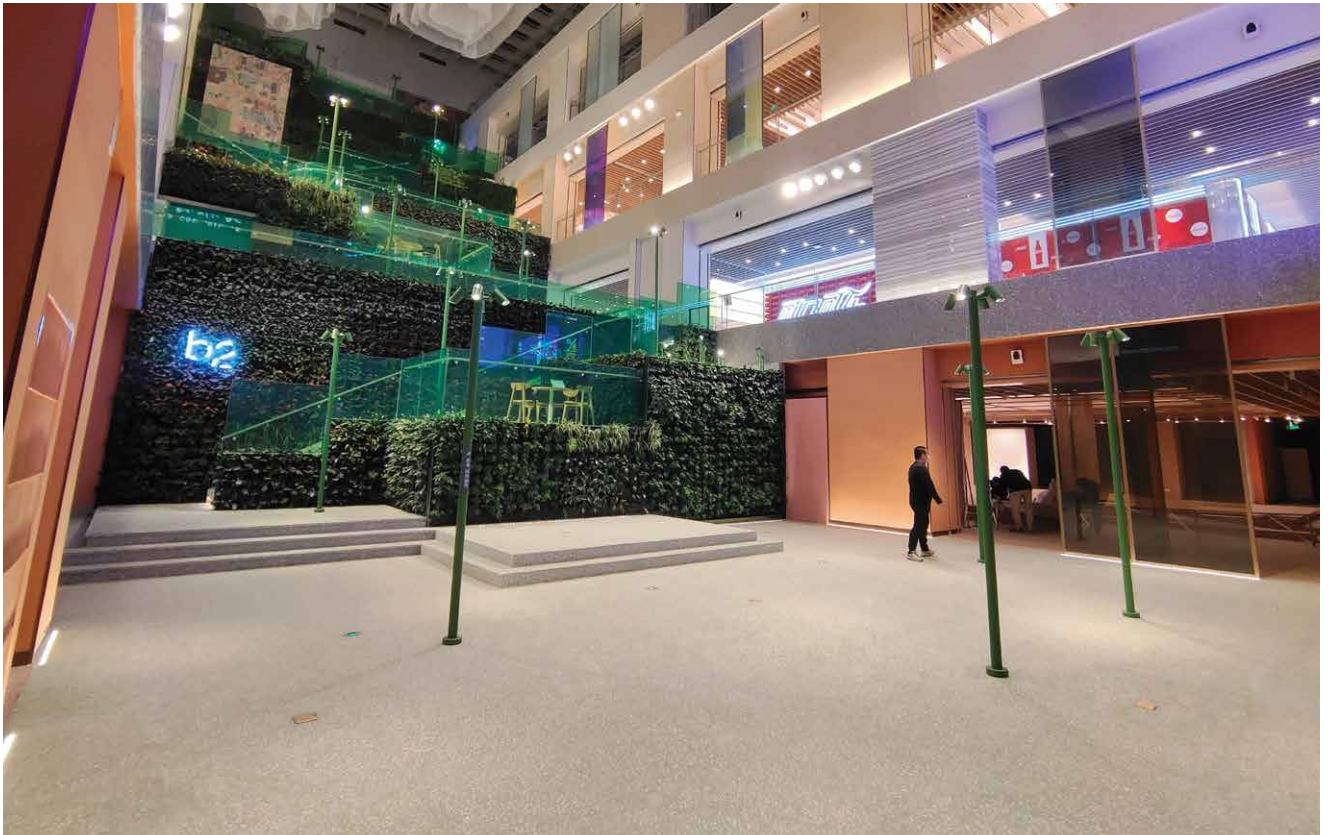
岩山彩金 Iwayama Gold
WT259



岩山古棕 Iwayama Brown
WT270



华伦天奴深灰 Valentino Dark Grey
WT232



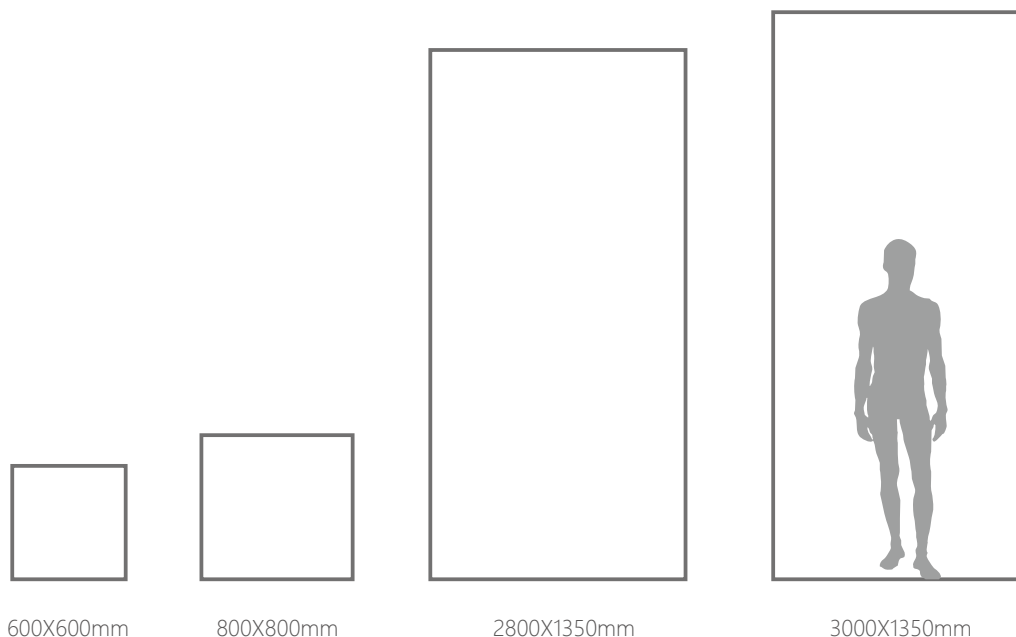
西安潮空间 – WT139 细麻浅灰 Linen Light Grey / WT278 岩山宝玉 Iwayama Jade

尺寸列表 Size List

尺寸 Size of slabs	2400X1350mm/94"x53" 2800X1350mm/110"x53"	2500X1350mm/98"x53" 3000X1200mm/118"x47"	3000X1350mm/118"x53" (MAX)		
规格板 Cut to sizes	600x600mm	800x800mm			
表面处理 Finishing	抛光 Polished	哑光 Honed	荔枝面 Brush-hammered	火烧面 Flamed	水冲面 Water-jet

可依据订单要求定制尺寸。
All sizes can be made by order.

厚度 Thickness  15mm  18mm (常规)  20mm  30mm



产品图片皆为实物拍摄，因光线、屏幕参数、印刷材料等因素影响，与实物颜色存在一定色差，具体以实物为准。
The product images are all taken from physical objects, and due to factors such as lighting, screen parameters, and printing materials, there is a certain color difference between them and the actual object. The specific color difference is based on the actual object.

传统水磨石（现浇）性能对比表

Comparison with Traditional Terrazzo

检查项目 Test Item	单位 Unit	传统水磨石（现浇） Traditional Terrazzo	威洋无机水磨石 Techrazzo
吸水率 Water Absorption	%	≥3	0.19~0.53
莫氏硬度 Moh's Hardness	级	3	4~6
密度 Density	g/cm ³	< 2.3	2.37~2.49
压缩强度 Compressive Strength	Mpa	< 90	101~123
干燥弯曲强度 Flexural Strength (Dry)	Mpa	< 8	12.2~14.5
光泽度 Gloss	-	< 30	49.3~63
放射性 Radioactivity	-	I _{Ra} < 0.1 I _γ < 0.1	I _{Ra} < 0.1 I _γ < 0.1
无气孔 Pore-Free	-	•	•••••
加工难度 Processing Difficulty	-	多为现浇无加工	极佳, 无缝拼接, 45°拼接
抗化学腐蚀 Chemical Resistance	-	•	•••••
耐磨性 Wear Resistance	-	•••	•••••
抗冻融 Freeze-Resistant	-	•	•••••
应用领域 Application Area	-	室内外墙地面	室内外墙地面、家居用途、厨卫台面板
售后 After-Sales	-	易开裂, 有气孔	不会起翘、发黄、开裂、无气孔
施工 Construction	-	需要现场水打磨, 易造成水污染	直接水泥沙或瓷砖胶铺贴, 没有水污染
养护 Conservation	-	养护时间长, 施工周期长	不需要养护时间, 施工快
防水性 Waterproof	-	需要做自流平、防水层, 增加成本	铺贴不需要做防水, 降低成本
成品质量 Quality	-	没有大吨位压制, 人工搅拌, 布料不均匀, 致密度不高, 易有气孔开裂问题	通过抽真空大吨位压机压制, 致密度高, 经过精密搅拌, 布料系统, 颜色统一, 布料均匀
表面处理 Surface Treatment	-	浇筑好的水磨石需要再次做表面处理提高防污	表面用物理抛光即可达到高光泽度, 不需要二次表面处理



广东威洋实业

广东省河源市东源县蓝口镇望牛岗（石英石资源产地）

Guangdong Wayon Industrial

Wangniu Gang, Lankou Town,
Dongyuan District, Heyuan,
Guangdong, China

Tel.: +86 762-83338 668

Fax: +86 762-83338 668 PC:517500

佛山威洋殿堂级展厅

广东省佛山市季华西路68号中国陶瓷总部基地中区F02座

Foshan Wayon Showroom

F02 Central Area, CCIH, No.68,
West Jihua Road, Chancheng
District, Foshan, Guangdong, China

Tel.: +86 757-8256 8296

Fax: +86 757-8256 8296 PC:528000

云浮威洋石材

广东省云浮市云城区河口镇初城工业区

Yunfu Wayon Stone

Chucheng Industrial Area, Hekou
Town, Yuncheng District, Yunfu,
Guangdong, China

Tel.: +86 766-8216 098

Fax: +86 766-8216 038 PC:527300

威洋新新石材加工中心

广东省云浮市云城区夏洞格木桥转移基地兴达大道

Wayon C-Stone

C-Stone, Xingda Avenue, Gemuqiao
Transfer Base, Xiadong, Yuncheng
District, Yunfu City, Guangdong,
China

Tel.: +86 139 2718 9982 PC:527300

上海威洋石材

上海市嘉定区曹安公路4589号

Shanghai Wayon Stone

No.4589, Cao'an Road, Jiading
District, Shanghai, China

Tel.: +86 21-5959 6969

Fax: +86 21-5959 6699 PC:201804

广州威洋石材

广州市白云区广从一路81号威洋大厦

Guangzhou Wayon Stone

Wayon Tower, No. 81 Guangcong 1st
Road, Baiyun District, Guangzhou,
Guangdong, China

Tel.: +86 20-8605 0888

Fax: +86 20-8605 0888 PC: 510540

江苏威洋石材

江苏省南通市海安县老坝港滨海新区金港大道联发路创业路

Jiangsu Wayon Stone

Chuangye Road & Lianfa Road, Jingang
Avenue., Binhai New Area, Laoba
Harbour, Haian Town, Nantong City,
Jiangsu Province, China

Tel.: +86 139-1833-1833 PC:226000



www.wayon.com