

威洋石英石 无机水磨石

Quartz Surfaces & Inorganic Terrazzo





北岭白 Northridge
WG515



深涧 River Valley
WG510



鎏金白 Borage Gold
WG519



霜夜灰 Frost Grey
WG487



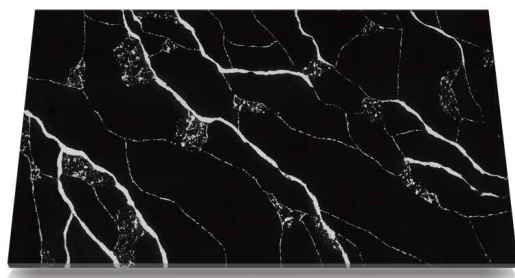
梦金莎 Dream Gold
WG480



星际灰 Interstellar Grey
WG482



碧云蓝 Icecrack Blue
WG478



星河黑 Starry Black
WG477



鱼肚白金 Calacatta Gold
WG466



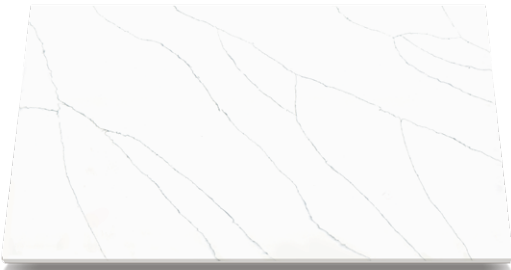
星河白 Starry White
WG467



冰辉白 Sunice White
WG469



依灵灰 Evian Grey
WG518



细雨 Drizzle
WG511



冰魄白 Spirit White
WG486



烟花白 Fireworks White
WBG376



雅丽白 Calacatta Vagli
WG422



伯爵白 Earl White
WG468



阿拉斯加白 Alaska White
WG485



沙浪玉 Challans
WG452



卡里冰玉 Kari Jade
WG435



光裂黑 Dawning Black
WG484



白蔷薇 Rose Gigantea
WG455



万里金层 Walle Gold
WG516



金冰花 Carrara Niello
WG320



浅云图 Cloud Atlas
WG410



脉纹白 Vein
WG412



阿尔卑斯白 Alps White
WG499



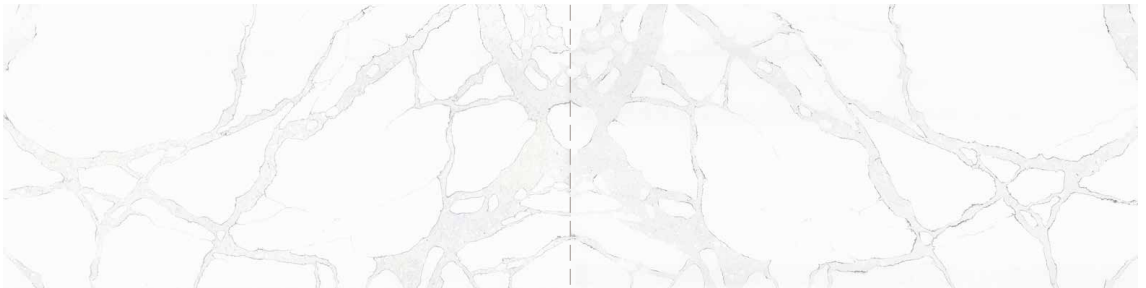
脉冲白 Pulse White
WG437



冰裂灰 Icecrack Grey
WG454



万里层云 Cloud Layer
WG415



天际白(对纹) Skyline (Book match)
WG512



雪绒花 Edelweiss
WG407



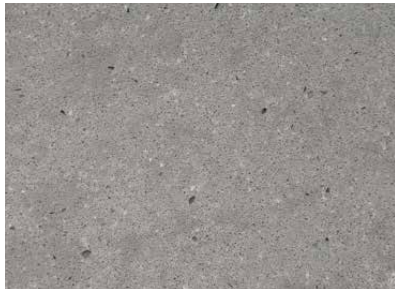
多瑙灰 Donau Grey
WG460



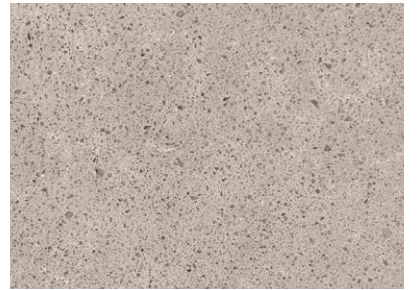
鸿栗棕 Honly Brown
WG476



伯爵米白 Earl Beige
WG436



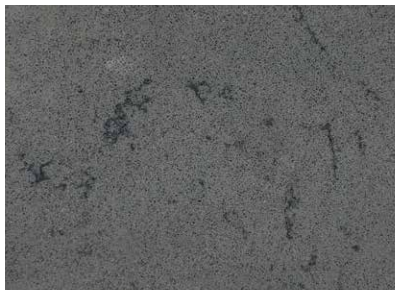
伯爵灰 Earl Grey
WG475



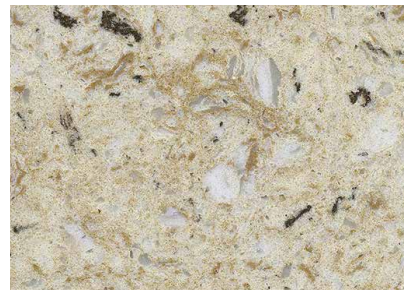
伯爵棕 Earl Brown
WG488



绣江南 Lace Beige
WG106



雪花灰 Snow Grey
WG479



豪爵金 Caramel
WBG202



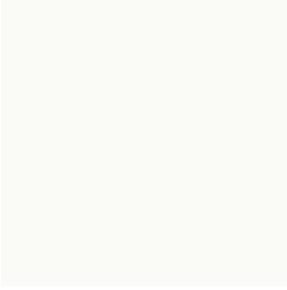
西丽白 Sweeden White
WBG215



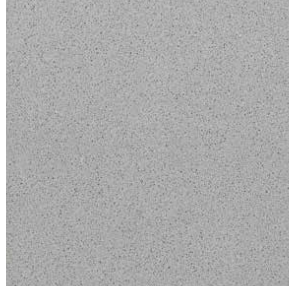
优诗曼 Ice White
WBG201



维纳金 Vina Giallo
WBG223



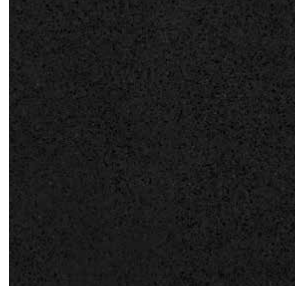
纯白 Pure White
WG025



香格里拉灰 Shangri-La Grey
WG026



经典米白 Classical White
WG027



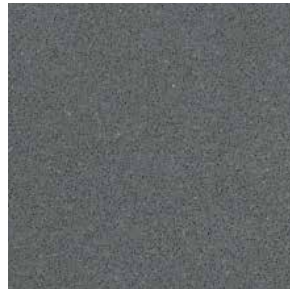
纯黑 Pure Black
WG028



经典米黄 Classic Beige
WG030



纯棕色 Pure Brown
WG032



深灰 Dark Grey
WG034



贝图深灰 Cinder
WG050



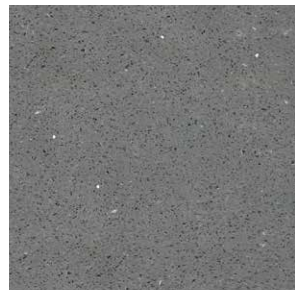
芝麻灰 Sesame Grey
WG053



超白 Super White
WG060



微光白 Shimmer White
WG062



微光灰 Shimmer Grey
WG064



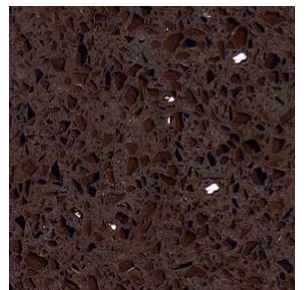
微光黑 Shimmer Black
WG063



香槟米黄 Champagne Berige
WG119



银星白 Star White
WG212



咖啡水晶 Cappuccino
WG111



雪山白 Snow White
WG123



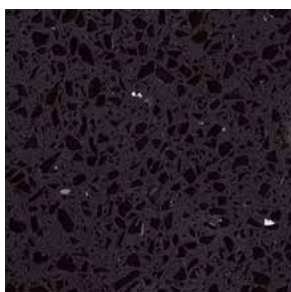
白底香槟米白 Champagne Frost
WG135



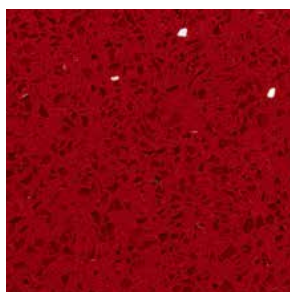
灰姑娘 Cinderella
WG136



星点白 Sparkling White
WG150



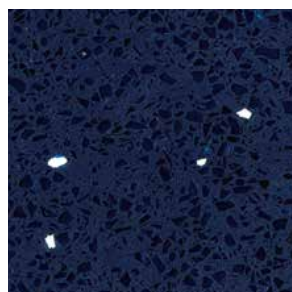
银星黑(细晶) Star Black(Small)
WG217S



银星红 Star Red
WG220



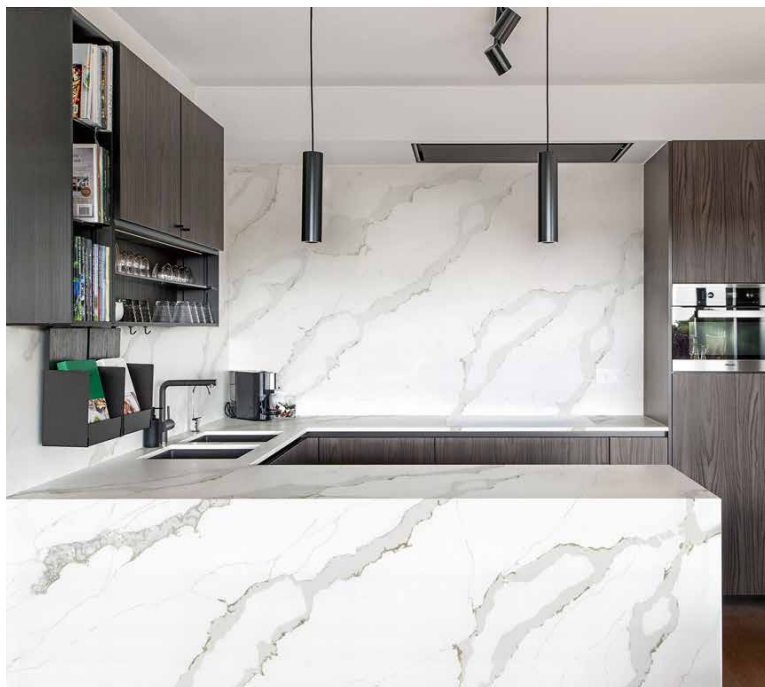
粗晶米黄 Star Yellow
WG222



银星蓝 Star Blue
WG218



鱼肚金 Calacatta Gold
WG466



鎏金白 Borage Gold
WG519

尺寸列表 *Size List*

尺寸 Slab sizes	WG 系列 WG series	3200x1600mm/126"x63"	3000x1400mm/118"x55"			
	WBG 系列 WBG series	3000x1350mm/118"x53"	3000x700mm/118"x27.5"			
规格板 Cut to size		300x300mm	300x600mm	400x400mm	600x600mm	
台面板(英寸) Countertop sizes (inch)		110"x26"	110"x36"	110"x42"	110"x52"	110"x4" 110"x6"
表面处理 Surface Finishing		抛光 Polished	哑光 (定制) Honed (customized)			

可依据订单要求定制尺寸。
All sizes can be made by order.

厚度 Slab Thickness 12mm 15mm 18mm 20mm 30mm

产品参数 *Product Performance*

检测项目 Test item	单位 Unit	标准要求 Required Standard	检测结果 Test Result	单项评价 Item Estimate
吸水率 Water Absorption	%	≤0.10	0.01~0.02	✓
干燥压缩强度 Compressive Strength (Dry)	Mpa	≥150	182~207	✓
干燥弯曲强度 Flexural Strength (Dry)	Mpa	≥30	55.5~72.1	✓
耐磨度 Abrasion Resistance	1/cm ³	≥50	70	✓
莫氏硬度 Moh' s Hardness	-	≥5	6~7	✓
密度 Density	g/cm ³	-	2.36~2.45	✓
放射性 Radioactivity	-	≤1	I _{Ra} < 0.1 I _γ < 0.1	✓

产品通过了Greenguard Gold金牌绿色卫士室内空气质量认证、NSF美国食品安全认证(ANSI 51)、欧盟CE安全认证等，标志着威洋石英石在使用过程中可直接与食物接触且不会对食品、周围环境产生污染。并且威洋是阿里巴巴金品诚企供应商。

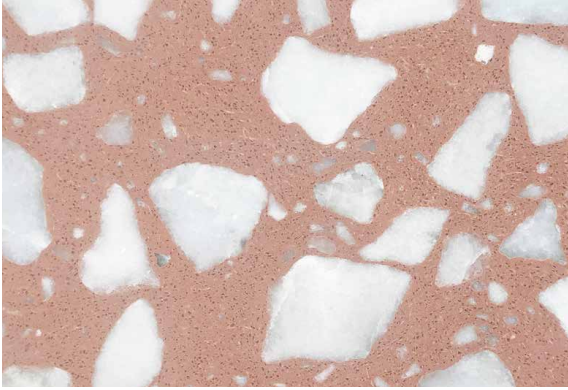
Wayon quartz uses 100% SAFE material, it is certified by Greenguard Gold, proving that our products comply with air quality standards, covering volatile organic compounds. They are also NSF (USA) and CE certified, meaning that they are safe and hygienic for direct contact with food. Wayon is a Gold Supplier & Assessed Company of Alibaba (Service provided by Bureau Veritas Certification).



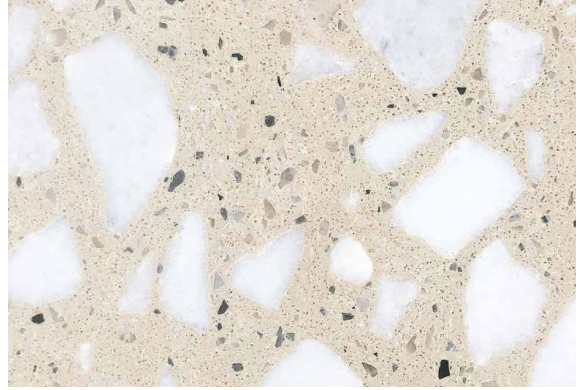

WAYON
— 威洋·石材 —

无机水磨石
Inorganic Terrazzo

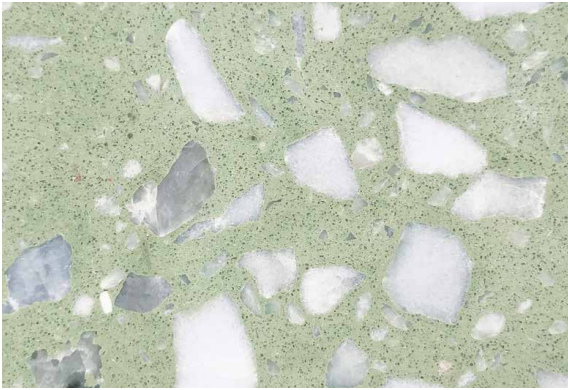




白石粉红 Shiraishi Pink
WT276



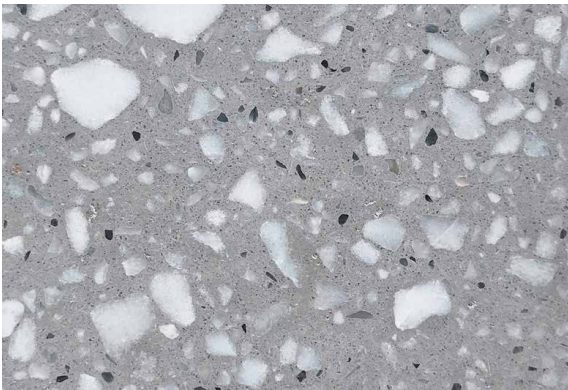
白石米黄 Shiraishi Beige
WT274



苍松翠绿 Pines Green
WT277



松香淡黄 Rosin Light Yellow
WT275



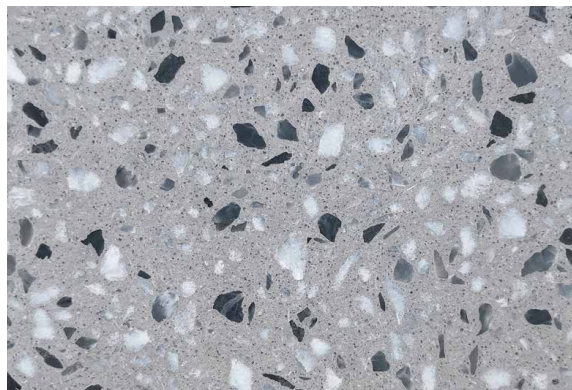
岩山宝玉 Iwayama Jade
WT278



新天地灰 Sunday Grey
WT265



喜悦灰 Joey Grey
WT273



拜伦灰 Byron Grey
WT257



细麻红棕 Linen Brown
WT140



细麻中灰 Linen Medium Grey
WT141



星罗浅灰 Seira Light Grey
WT142



细麻灰 Linen Grey
WT137



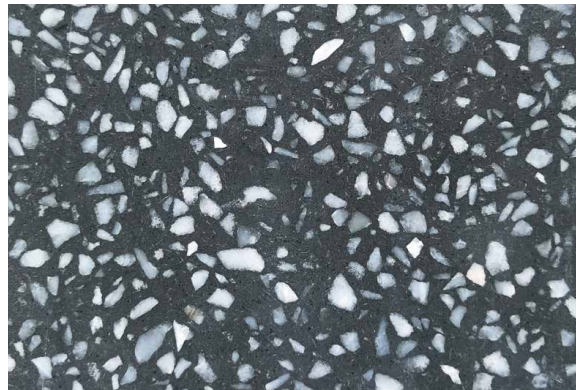
银装白II Ice White II
WT225-2



拜伦白 Byron White
WT258



云山素白 Summit Pure White
WT134



新天地深灰 Sunday Dark Grey
WT264



细麻深灰 Linen Dark Grey
WT138



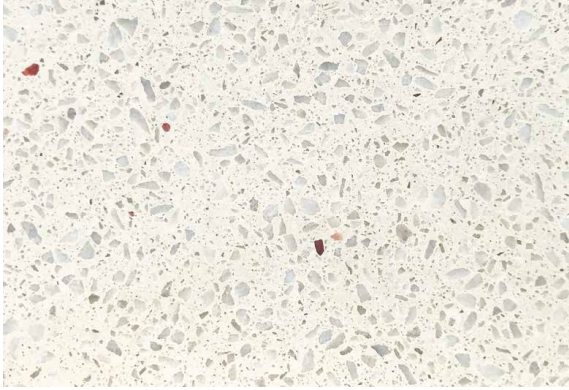
炭晶黑 Carbon Black
WT269



新天地白 Sunday White
WT136



细麻灰 Linen Grey
WT137



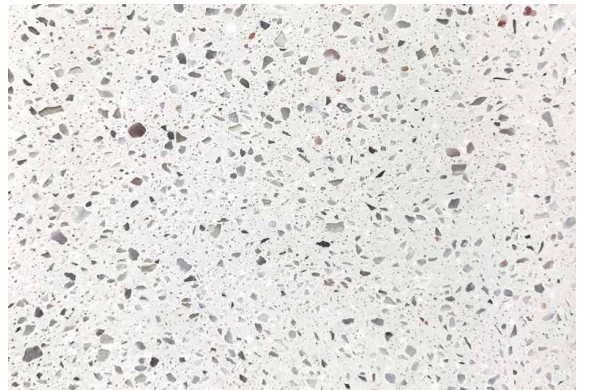
漫天灰白 Sky Grey White
WT131



冰钻白石 Diamond Ice
WT240



漫天灰 Sky Grey
WT132



新天地白 Sunday White
WT136



星罗米白 Seira White
WT123



星罗白玉 Seira White Jade
WT130



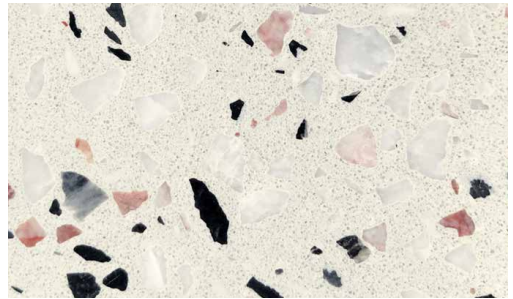
卡娜白 Kala White
WT267



拜伦金 Byron Gold
WT266



罗马茶花 Roman Camellia
WT243



罗马粉白 Roman Pink-white
WT242



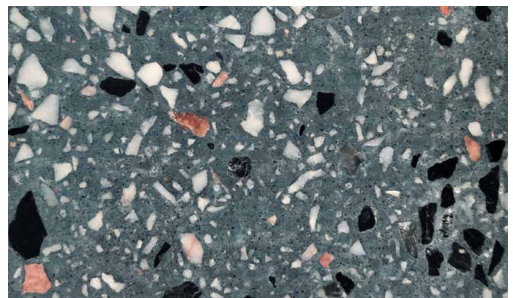
罗马彩珀 Roman Color Amber
WT252



罗马粉红 Roman Pink
WT250



星罗米黄 Seira Yellow
WT118



星罗蓝 Seira Blue
WT121



细麻浅灰 Linen Light Grey
WT139



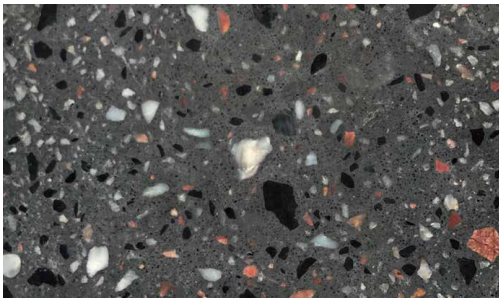
华伦天奴灰 Valentino Grey
WT241



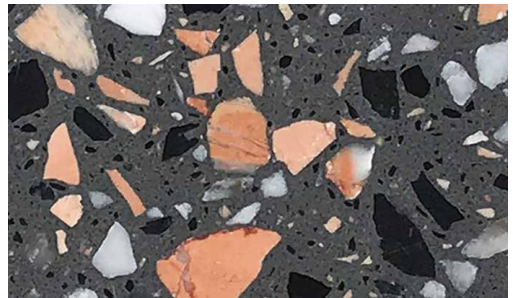
岩山彩花 Iwayama Acantholimon
WT263



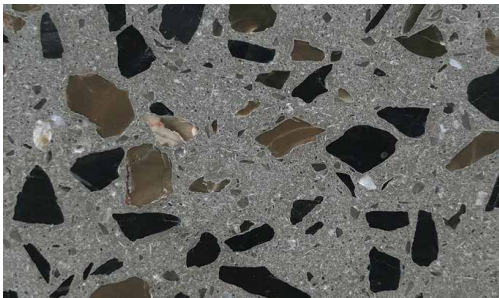
岩山浅灰 Iwayama Grey
WT210



星罗青灰 Seira Grey
WT119



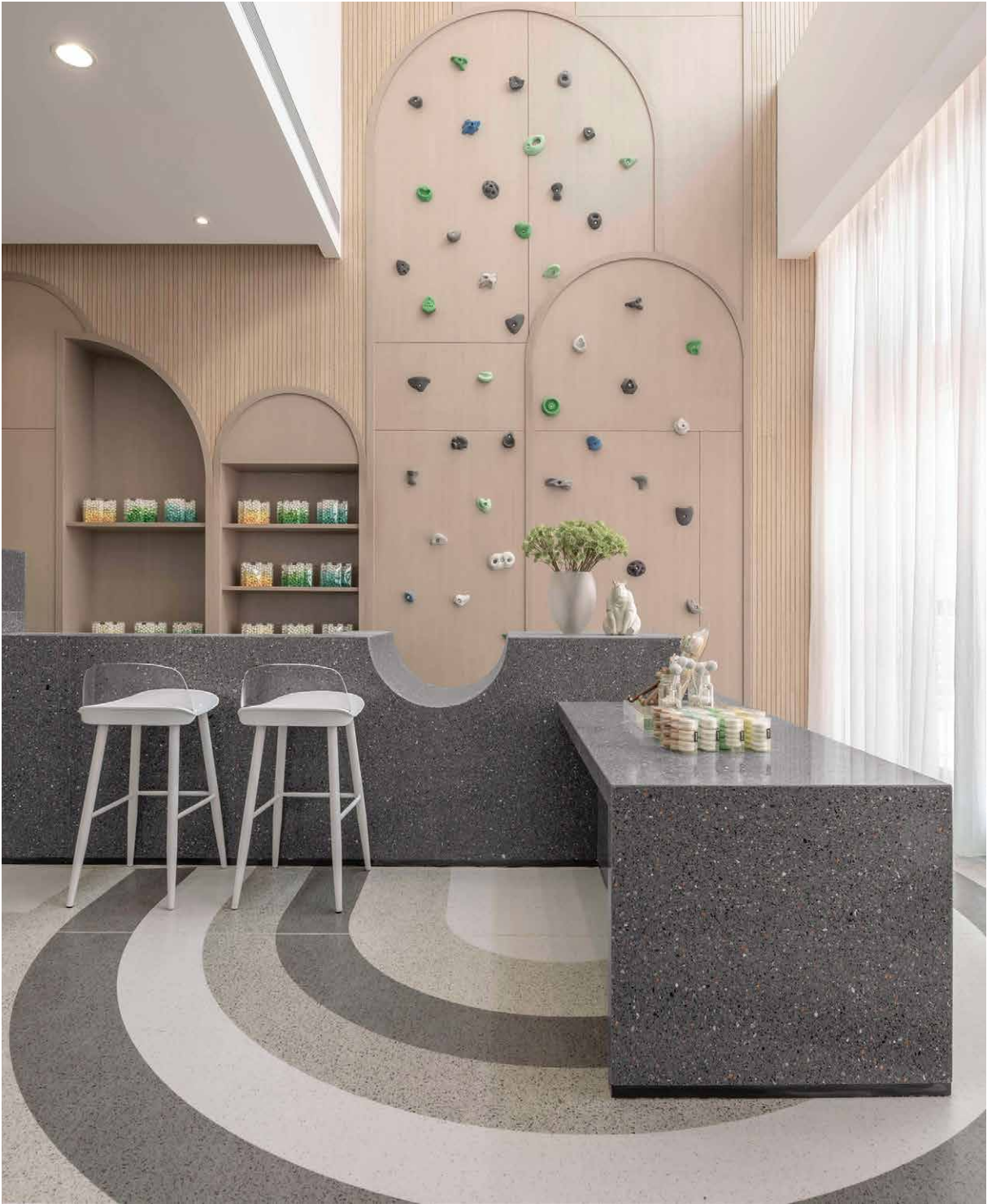
岩山彩金 Iwayama Gold
WT259



岩山古棕 Iwayama Brown
WT270



华伦天奴深灰 Valentino Dark Grey
WT232



星罗青灰 Seira Grey
WT119

尺寸列表 *Size List*

尺寸 Size of slabs	2400x1350mm/94"x53"		2500X1350mm/98"x53"		
	2800x1350mm/110"x53"		3000X1200mm/118"x47"		3000X1350mm/118"x53"
规格板 Cut to sizes	600x600mm	800x800mm			
表面处理 Finishing	抛光 Polished	哑光 Honed	荔枝面 Brush-hammered	火烧面 Flamed	水冲面 Water-jet

可依据订单要求定制尺寸。
All sizes can be made by order.

厚度 Slab Thickness



产品参数 *Product Performance*

检测项目 Test Item	单位 Unit	标准要求 Required Standard	检测报告 Test Result	单项评价 Item Estimate
吸水率 Water Absorption	%	≤3.0	0.19~0.53	✓
压缩强度 Compressive Strength	Mpa	≥50	101~123	✓
干燥弯曲强度 Strength	Mpa	≥9.0	12.2~14.5	✓
莫氏硬度 Moh's Hardness	-	≥3.0	4~6	✓
密度 Density	g/cm ³	2.35	2.37~2.49	✓
放射性 Radioactivity	-	-	I _{Ra} <0.1 I _γ <0.1	✓
不燃性试验 Non-Combustibility Test	-	-	ΔT=0.9 C Δm=9.7% T=0s	✓
燃烧总热值 Total Calorific Value Of Combustion	MJ/kg	-	-0.72	✓
燃烧性能等级 Combustion Performance Level	-	-	A1	✓

广东威洋实业

Guangdong Wayon Industrial

广东省河源市东源县蓝口镇望牛岗 (石英石资源产地)
Wangniu Gang, Lankou Town, Dongyuan District,
Heyuan, Guangdong, China

Tel.: +86 762-8338 668

Fax: +86 762-8338 668 PC:517500

佛山威洋殿堂级展厅

Foshan Wayon Showroom

广东省佛山市季华西路68号中国陶瓷总部基地中区F02座
F02 Central Area, CCIH, No.68, West Jihua Road,
Chancheng District, Foshan, Guangdong, China

Tel.: +86 757-8256 8296

Fax: +86 757-8256 8296 PC:528000

云浮威洋石材

Yunfu Wayon Stone

广东省云浮市云城区河口街道初城工业区
Chucheng Industrial Area, Hekou Sub-District,
Yuncheng District, Yunfu, Guangdong, China

Tel.: +86 766-8216 098

Fax: +86 766-8216 038 PC:527300



www.wayon.com

<http://yfwayon.en.alibaba.com>

202303

威洋石材加工中心

C-Stone

广东省云浮市云城区夏洞格木桥转移基地兴达大道
C-Stone, Xingda Avenue, Gemuqiao Transfer Base, Xiadong,
Yuncheng District, Yunfu City, Guangdong, China

Tel.: +86 139 2718 9982 PC:527300

上海威洋石材

Shanghai Wayon Stone

上海市嘉定区曹安公路4589号
No.4589, Cao'an Road, Jiading District, Shanghai, China

Tel.: +86 21-5959 6969

Fax: +86 21-5959 6699 PC:201804

广州威洋石材

Guangzhou Wayon Stone

广州市白云区新广从一路3号
No.3 Xin Guangcong yi Road, Baiyun District,
Guangzhou, Guangdong Province, China

Tel.: +86 20-8605 0888

Fax: +86 20-8605 0888 PC: 510540

江苏威洋石材

Jiangsu Wayon Stone

江苏省南通市海安县老坝港滨海新区金港大道联发路创业路
Chuangye Road & Lianfa Road, Jingang Avenue.,
Binhai New Area, Laoba Harbour, Haian Town,
Nantong City, Jiangsu Province, China

Tel.: +86 139-1833-1833 PC:226000