



Company website



Wechat QR code



LV Switches INC › IPPBX Series › ›Unified communication System››

Guangdong Shanglu Information Technology Co., Ltd.

www.lvswitches.com service@lvswitches.com

F1,Guangdong Newlight industrial Base,Luocun,Foshan City,GuangDong,China

Greative technology leading to future

Company introduction >

Headquartered in Foshan, Guangdong, China, Lvswitches Inc. is a leading manufacturer for unified communication products and solution provider. With doctors who obtained their academic achievement in America, profound technology capability and thorough familiarity with the telecom sector, Lvswitches has had its different research and understanding in IP unified communication and mobile internet.

With products series in: unified communication platform, IP PBX, IAD gateway, IP phone and IMS, Lvswitches provides business, schools, hospitals, etc. with unified communication solution and application.

Lvswitches has patents in core technologies and software copyrights in unified communication, and is also the international certificate holder of ISO 9001:2015, FCC, CE, RoHS, etc. With its own factory, Lvswitches has research institutes and distribution offices in Guangdong, Jiangsu and Ji'nan provinces as well as a research and development center in New Jersey, America. With endeavour in the long run, Lvswitches has established steady and sustainable relationship with its global clients, products and services extending to countries and regions in the world. With technology as the core, insistence in innovation and service, win-win relationship with clients and business partners, Lvswitches is committed to a global forerunner brand in unified communication.



30 Years
Industry experience

100+
R & D personnel

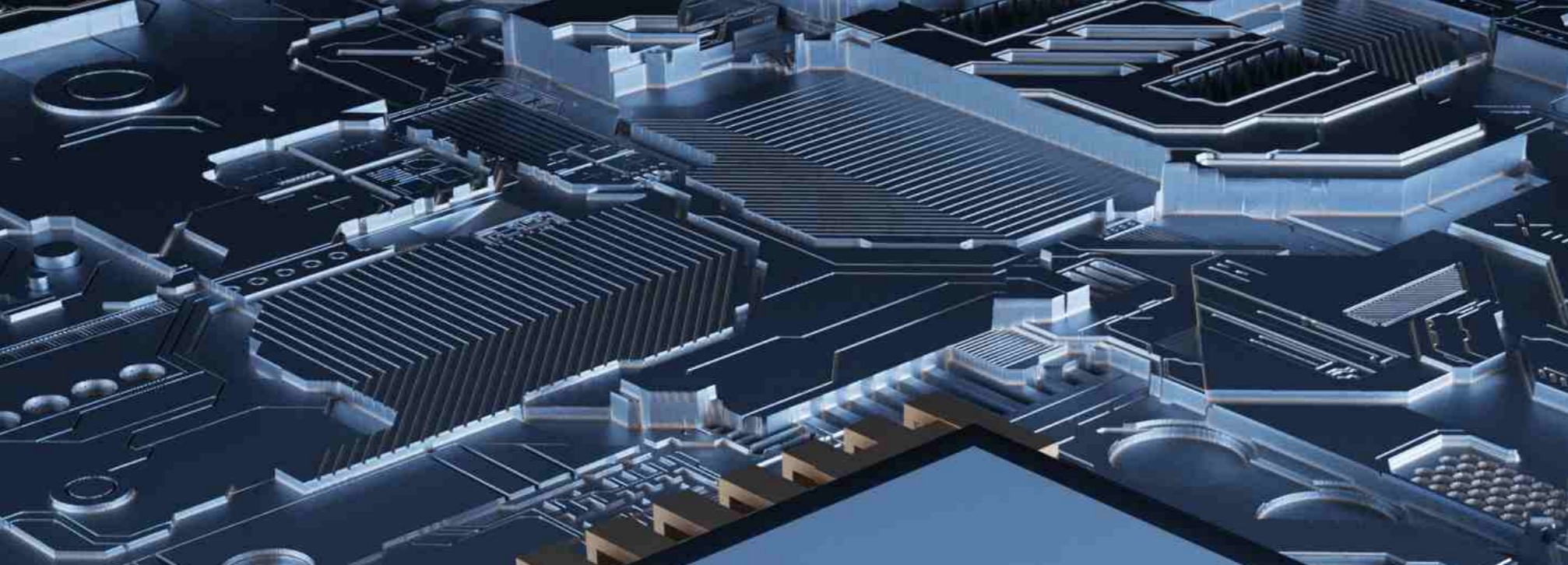
130+
National application deployment



Full view of integrated communications product



Model	IP PBX800	IP PBX3000	IP PBX6000	IP PBX8000	IMS9000
Parameters					
Grade	Commercial grade	Enterprise grade	Enterprise grade	Enterprise grade	Operator grade
Applicable unit	12~300 users	32~500 users	128~600 users	128~1300 users	1 thousand - one million users
Single machine Max SIP LICENSE	300	500	600	1300	20000
Single machine Max SIP trunk LICENSE	100	200	300	500	2000
Number of concurrent calls	Full concurrency	Full concurrency	Full concurrency	Full concurrency	≥ 2000 concurrent
Single machine maximum E1/T1 license	—	4 pieces	4 pieces	8 pieces	—
Expand FXS/FXO board	—	32 pieces	32 pieces	32 pieces	—
Maximum Analog ports	4FXO+12FXS	128FXS/FXO	256FXS/FXO	384FXS/FXO	—
Network interface	4Gigabit Ethernet ports	3Gigabit Ethernet ports	3Gigabit Ethernet ports	3Gigabit Ethernet ports	2Gigabit Ethernet ports
Chassis (metal material)	1U	≤ 1.5U	≤ 2.5U	≤ 4.5U	1U
Dimension (Width x Depth x Height)	430x180x44 (mm)	443x356x64 (mm)	443x356x108 (mm)	443x420x188 (mm)	495x434x42.8 (mm)
Power	25W	150W	200W	300W	350W
Netweight	≤ 2KG	≤ 8KG	≤ 11KG	≤ 19KG	≤ 9KG
Installation mode	Standard rack				
Power input	100VAC-240VAC, 50/60Hz				
Relative humidity	95% during non-operation, non-condensing at 25°C to 30°C				
Ambient temperature	10°C to 35°C in operation, -40°C to +55°C in non-operation environment				
Reliability	7x24 hours, the success rate is greater than 99.999%, and the MTBF is greater than 80,000 hours				



E1/T1 Digital trunk



FXO Analog exterior line

IMS/NGN trunk

FXS Analog internal line

SIP user

Multiple interface types design, strong compatibility



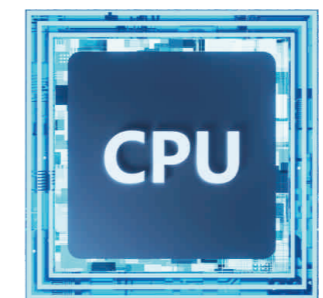
Hardware Configuration ! Full of the king's demeanor



Tailored for audio and video products.



The amount of concurrency can be fully concurrent / no blocking of calls.



Top level of CPU, Industrial level configuration



Intel Marvel Brand custom chip



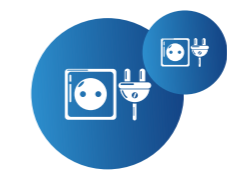
Using CORTEX-A9 processor



Dual-core four-thread design, single-core frequency reaches 1.2GHZ.



The IP PBX series are unified communication systems applicable for enterprise communication. The tailor-made CPU for audio and video products, industrial configuration, the dual-core and four-thread design, capabilities in both powerful hardware and software QOS and extremely speedy audio processing, is fusion of multiple innovative technologies, combining high reliability, leading technology design and convenient feasibility perfectly together.



IPPBX8000 Dual power supply design
seamless power switching to ensure uninterrupted operation.



QOS with both hardware and software, adopting advanced and cutting-edge technology, under the extremely poor network, priority is given to guaranteeing the voice quality.



Within the software! Demonstrate super strength

The IP PBX series are unified communication systems applicable for enterprise communication. LINUX system as the software core, and dual-system design assures uninterrupted operation; the set in SBC, and 360° safety protection make communication expense accurate; Distributed structure design, artificial intelligence algorithm work out the arrangement difficulty in the case of complicated network; QOS functions in both software and hardware makes voice smoothness a priority. All leads to your first-class IP communication experience, access of cutting-edge technologies, ultimately change the way we communicate.



Distributed architecture design

Ensure the system is stable and reliable.



A System

B System

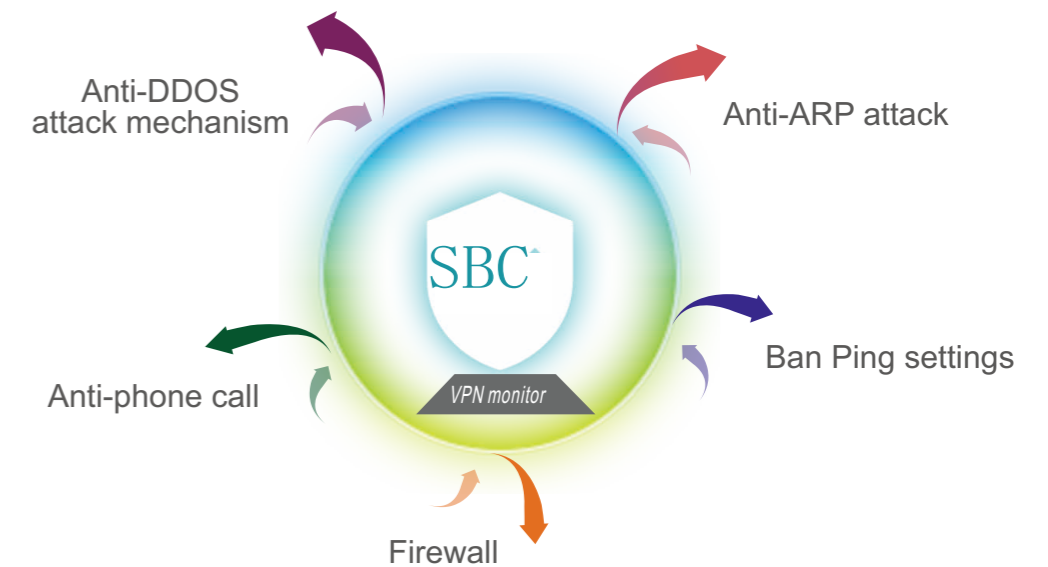
Dual systems

A and B systems automatically switch to ensure normal operation of the system

LINUX

Using LINUX system

With AI intelligent algorithm



Built-in router function

PPPoE/BroadbandAssignment/
IP Address Black and White List



DSP Audio processing function

Maximum 512-party users
are allowed to mix audio
to access the conference



IP PBX800

Characteristics

- IP PBX800 is a commercial-level system with full concurrent calls, suitable for small and medium-sized enterprises with 12 to 300 users;
- The device integrates analog/IP as one;
- Fast configuration: Web management interface, simple and easy to operate;
- Remote networking, each branch extension can call each other for free;
- Uplink trunk access: support IMS/NGN, trunk gateway, access to PSTN through analog trunk FXO/digital trunk E1/T1 board;
- Built-in powerful SBC mechanism to effectively prevent Internet attacks;
- Downlink user access: analog phones, IAD gateways, SIP phones, POS machines, fax machines, video phones, etc.;
- Rich functions: Call-in Queue group, external line to internal extension/mobile phone, IVR voice navigation, call recording, etc.;
- Built-in DSP audio processing functions: echo cancellation, dynamic jitter buffer, mute compression, comfortable noise generation, etc.;
- Support SNMP, TR-069 protocol centralized network management, network management can manage multiple IPPBX at the same time;
- Strong compatibility: IPPBX system supports multiple protocols and Encoding method, it can be connected to the operator's line / PBX equipment of the friend competitor.

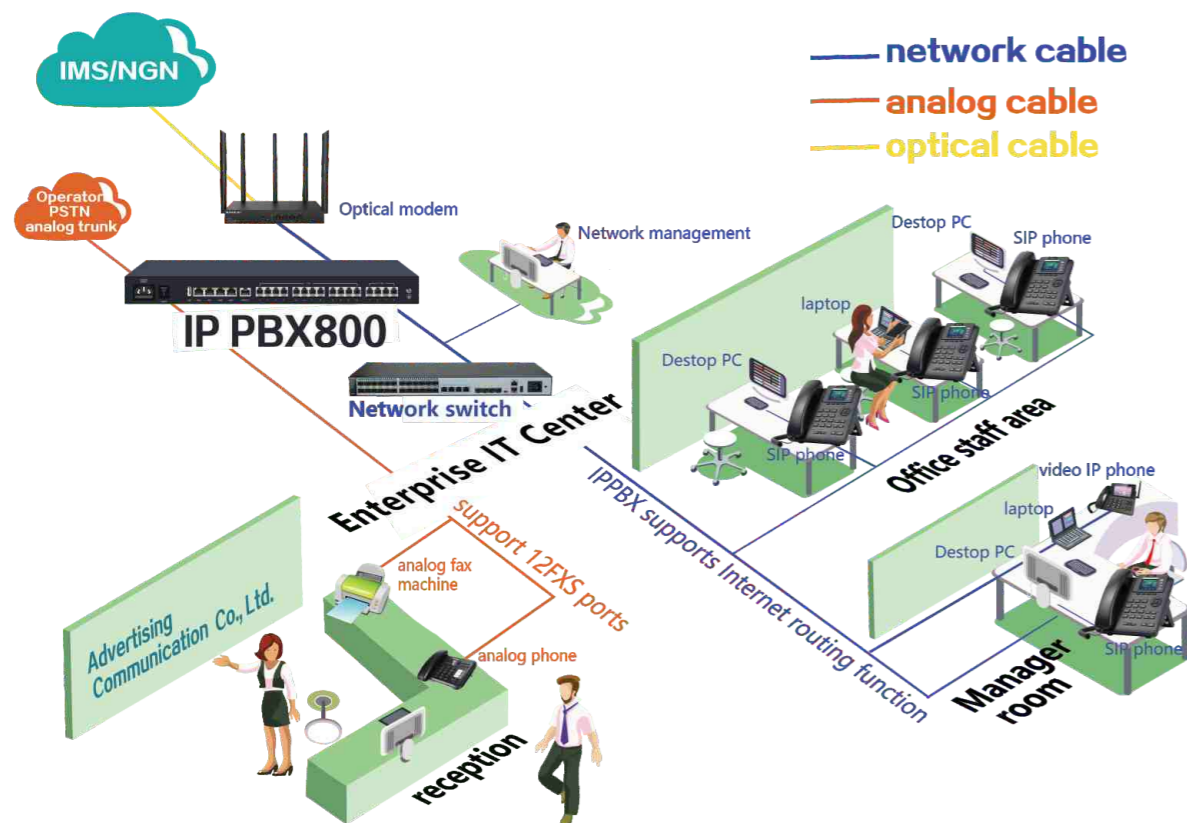


IP PBX3000

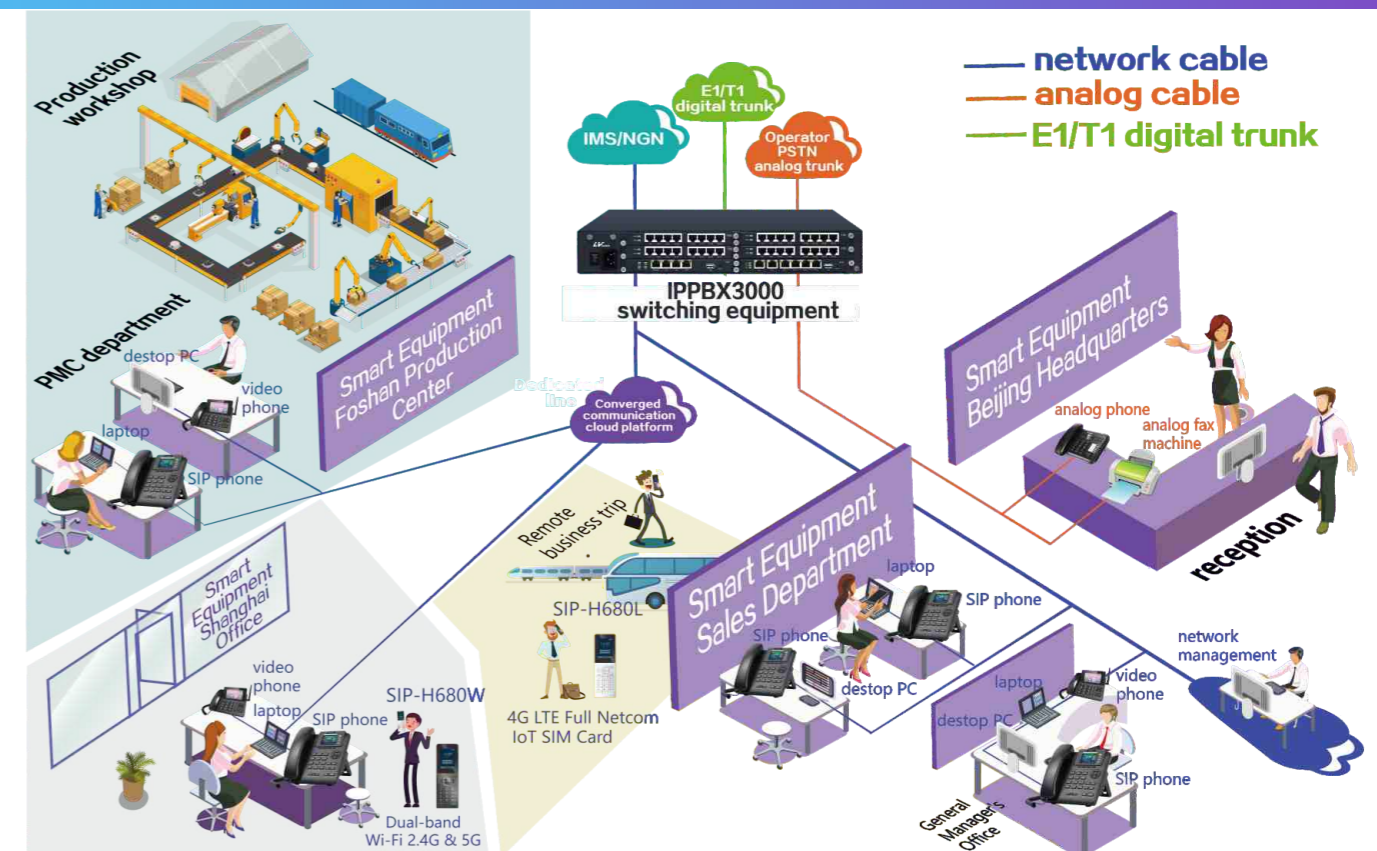
Characteristics

- IP PBX3000 is an enterprise-level system with full concurrent calls, suitable for medium-sized enterprises with 32 to 500 users;
- Single machine integrates analog/digital/IP, plug-in design: E1/T1, FXS and FXO interface modules can be configured according to requirements;
- Uplink trunk access: support IMS/NGN, trunk gateway, access to PSTN through analog trunk FXO/digital trunk E1/T1 board;
- Downlink user access: analog phones, IAD gateways, SIP phones, POS machines, fax machines, video phones, etc.;
- Rich functions: conference call, call recording, external line to mobile phone, billing interface, API docking hotel management system, etc.;
- Attendant console client manages extensions, and realizes real-time status display, call, transfer, conference initiation and other services of extensions;
- Built-in DSP audio processing functions: echo cancellation, dynamic jitter buffer, mute compression, comfortable noise generation, etc.;
- Fast configuration: Web management interface, simple and easy to operate;
- Built-in powerful SBC mechanism to effectively prevent Internet attacks;
- Maximum support for 128-party conferences;
- High stability: support dual-system hot standby high-reliability architecture;
- Support SNMP, TR-069 protocol centralized network management, network management can manage multiple IPPBXs at the same time;
- Strong compatibility: IPPBX system supports multiple protocols and encoding methods, and can be connected to operator lines/PBX equipment of friend competitor's.

Solutions of SMEs



Park area branch organization construction solution plan



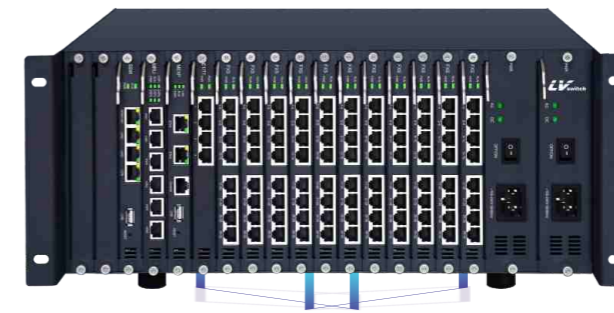
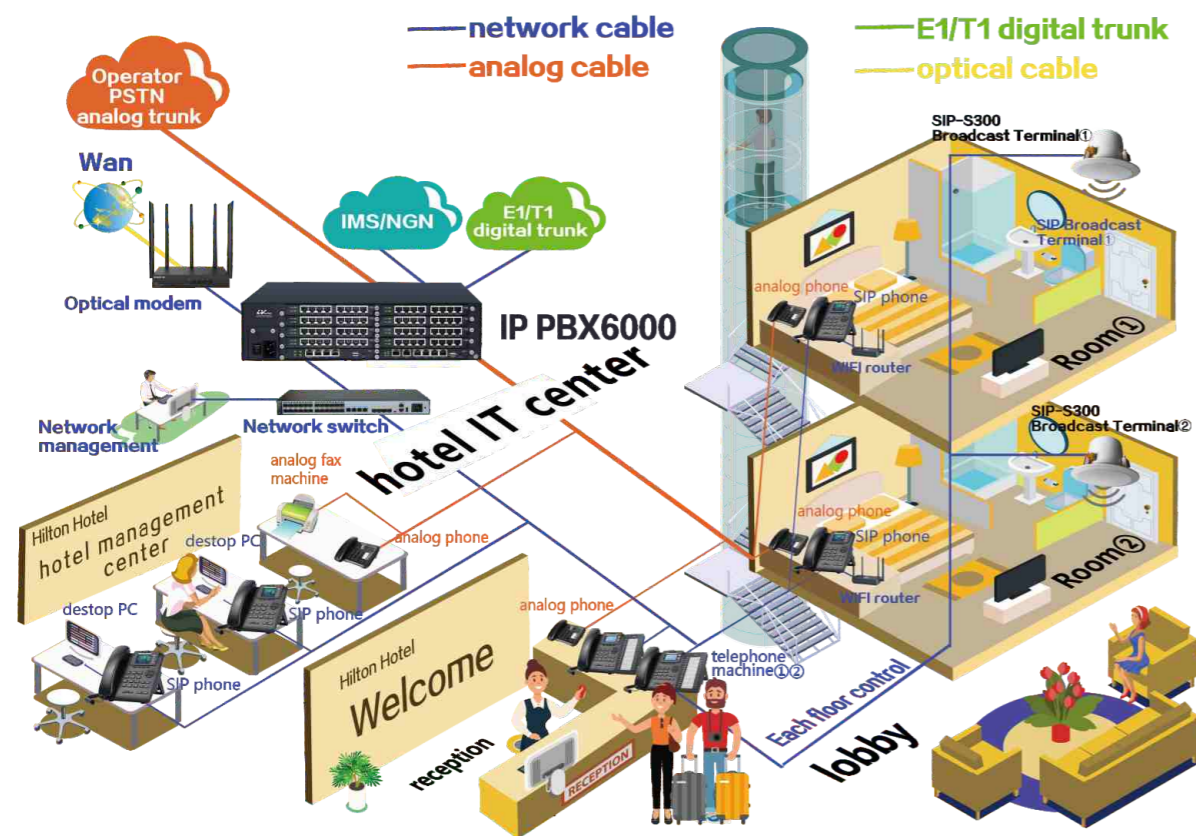


IP PBX6000

Characteristics

- IP PBX6000 is an enterprise-level system with full concurrent calls, suitable for medium-sized enterprises with 128 to 600 users;
- Single machine integrates analog/digital/IP, plug-in design: E1/T1, FXS and FXO interface modules can be configured according to requirements;
- Uplink trunk access: support IMS/NGN, trunk gateway, access to PSTN through FXO analog trunk/digital trunk E1/T1 board;
- Downlink user access: analog phones, IAD gateways, SIP phones, POS machines, fax machines, video phones, etc.;
- Rich functions: conference call, call recording, external line to mobile phone, billing interface, API docking hotel management system, etc.;
- Attendant console client manages extensions, and realizes real-time status display, call, transfer, conference initiation and other services of extensions;
- Built-in DSP audio processing functions: echo cancellation, dynamic jitter buffer, mute compression, comfortable noise generation, etc.;
- Fast configuration: Web management interface, simple and easy to operate;
- Built-in powerful SBC mechanism to effectively prevent Internet attacks;
- Maximum support for 128-party conferences;
- High stability: support dual-system hot standby high-reliability architecture;
- Support SNMP, TR-069 protocol centralized network management, network management can manage multiple IPPBXs at the same time;
- Strong compatibility: IPPBX system supports multiple protocols and encoding methods, and can be connected to operator lines/PBX equipment of friend competitor's.

Hotel unified communication solution plan

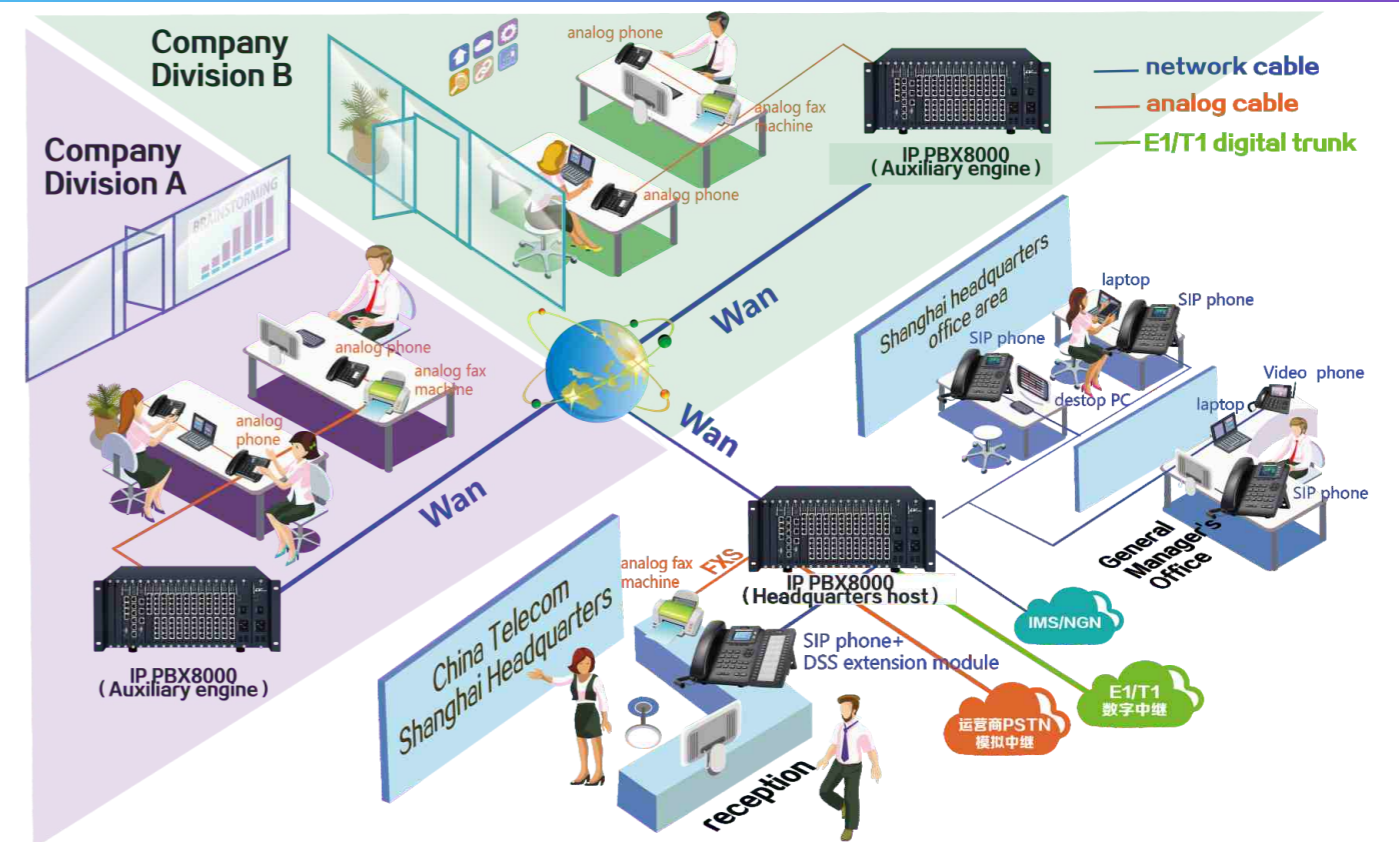


IP PBX8000

Characteristics

- IP PBX8000 is an enterprise-level system with full concurrent calls, suitable for medium-sized enterprises with 128 to 1300 users;
- Single machine integrates analog/digital/IP, plug-in design: E1/T1, FXS and FXO interface modules can be configured according to requirements;
- Uplink trunk access: support IMS/NGN, trunk gateway, access to PSTN through analog trunk FXO/digital trunk E1/T1 board;
- Downlink user access: analog phones, IAD gateways, SIP phones, POS machines, fax machines, video phones, etc.;
- Rich functions: conference call, call recording, external line to mobile phone, billing interface, API docking hotel management system, etc.;
- Attendant console client manages extensions, and realizes real-time status display, call, transfer, conference initiation and other services of extensions;
- Built-in DSP audio processing functions: echo cancellation, dynamic jitter buffer, mute compression, comfortable noise generation, etc.;
- Fast configuration: Web management interface, simple and easy to operate;
- Built-in powerful SBC mechanism to effectively prevent Internet attacks;
- Maximum support for 512-party conferences;
- High stability: Support dual power supplies and dual-system hot standby high-reliability architecture;
- Support SNMP, TR-069 protocol centralized network management, network management can manage multiple IPPBXs at the same time;
- Strong compatibility: IPPBX system supports multiple protocols and encoding methods, and can be connected to operator lines/PBX equipment of friend competitor's.

Enterprise unified communication solution plan



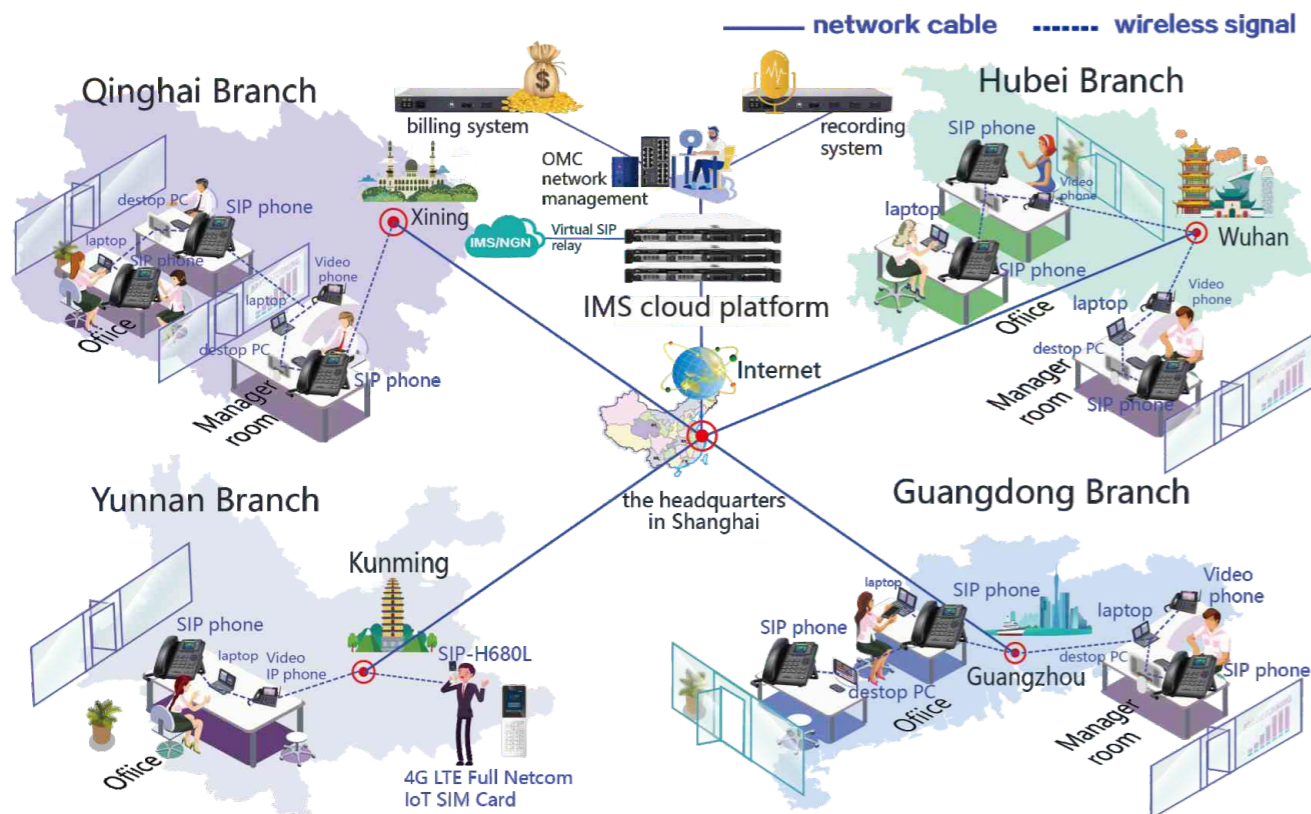


IMS9000

Characteristics

- IMS9000 is an operator-level system, and a single machine is suitable for a high-stability voice platform with 10 to 20,000 users ;
- It has active and standby dual-machine hot backup, and data configuration synchronization guarantees operation-level reliability services;
- For every equipment, the maximum concurrent calls reaches 2000 or more (the number concurrent calls depends on the hardware configuration).
- Support server cluster to expand users, which can expand more than one million users;
- Uplink trunk access: support IMS/NGN, access to PSTN through TG trunk gateway;
- Downlink user access: IAD gateway, SIP phone, soft terminal, video phone, etc.;
- Built-in powerful firewall mechanism to effectively prevent Internet attacks;
- The system locally supports a web-based graphical management interface to simplify local management;
- Rich functions: teleconference, call recording, billing interface, IVR voice navigation, attendant console client, etc.;
- Through TR-069, SNMP, Syslog and other standard network management protocols, realize remote unified management of distributed equipment;
- Reliable operation 7x24 hours, MTBF greater than 80,000 hours.

National Ministry of Communications Resolution Plan



Compatible brands >



National Voice Operation Show

