



Professional LED Light Manufacturer
For over 17 years

FEATURES & BENEFITS

- Dynamic Pixel RGB
- High Brightness Output
- The Neon Flex Can Be Recessed Or Surface Mounted
- Installation Indoor Or Outdoor Available
- High Quality, Rest Assured Service
- Salt Water Resistant
- Solvent Resistant
- UV Resistant
- Flame Resistant

VERTICAL BEND ROUND 13x13MM LED NEON FLEX, RGB-D , 12V/24V

SKU: WJ-SNF-T13-RGB-D-12V/24V



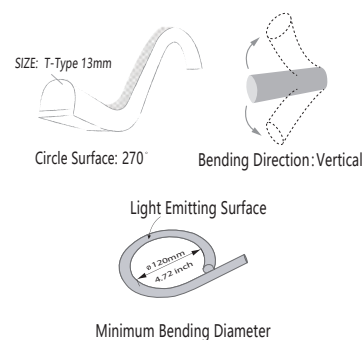
TECHNICAL INFORMATION

■ Neon Specifications

SKU Code	WJ-SNF-T13-RGB-D-12V/24V
Voltage	12V/24V
Watts/M	14W/M
Colour	Dynamic PIXEL
Lumens/M	300 LM
Guarantee	3 Years
Min Bend Diameter	120mm
CRI	90
Dimension	T13mm Half Round
IP Rating	IP65
IK Rating	IK08
Cut Points	Every 12.5cm(12V),12.5cm(24V)
Operating Temp	-20°C to +45°C
Lifespan	Up to 36000 Hours
Certification	CE, RoHs, Reach
Material	Food Grade Silicone
LED Type & Quantity	SMD5050 112pcs with 16 Pixels

■ Driver Require

1 Meter	> 18W
2 Meters	> 36W
3 Meters	> 54W
4 Meters	> 72W
5 Meters	> 90W

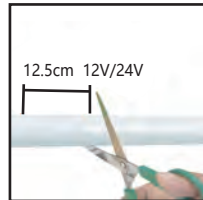


■ DESCRIPTION

LED Neon Flex is an innovative lighting system made in energy-saving LED technology. Its flexible, soft construction and uniform light color makes Neon Flex a perfect alternative to traditional neon tubes.

Wilgex LED Neon flex could be widely used as signage lighting in shop , as decorative lighting at home, in office and restaurant and as a building outline emphasizing lighting in architectural.

Neon Flex can be controlled by DMX, SPI, PWM, RF, DALI, dimmed or programmed. We offer 3 years guarantee for indoor installations (or 2 years for outdoor installations).

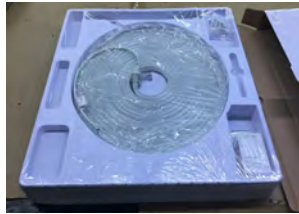


Easy to cut

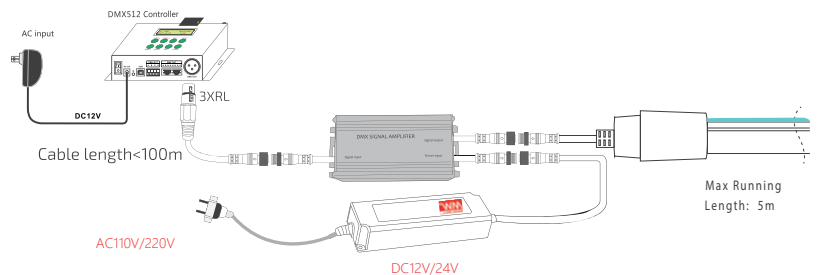
■ CUSTOM PACKAGE

Small Package For Distributors (5m, 10m Roll)

Giftbox



1- DMX



2 - SPI

