



Professional LED Light Manufacturer
For over 17 years

FEATURES & BENEFITS

- Dynamic Pixel RGB
- High Brightness Output
- The Neon Flex Can Be Recessed Or Surface Mounted
- Installation Indoor Or Outdoor Available
- High Quality, Rest Assured Service
- Salt Water Resistant
- Solvent Resistant
- UV Resistant
- Flame Resistant

VERTICAL BEND ROUND ϕ 18MM LED NEON FLEX, RGB-D , 24V

SKU: WJ-PNF-D18-RGB-D-24V



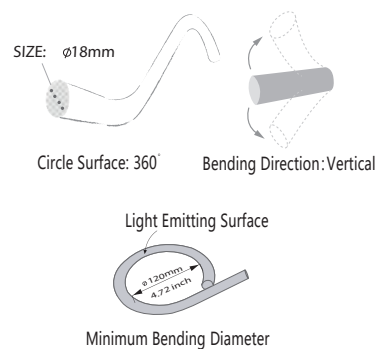
TECHNICAL INFORMATION

■ Neon Specifications

SKU Code	WJ-PNF-D18-RGB-D-24V
Voltage	24V
Watts/M	14W/M
Colour	Dynamic PIXEL
Lumens/M	300 LM
Guarantee	3 Years
Min Bend Diameter	120mm
CRI	90
Dimension	ϕ 18mm
IP Rating	IP65
IK Rating	IK08
Cut Points	Every 25cm(24v)
Operating Temp	-20°C to +45°C
Lifespan	Up to 36000 Hours
Certification	CE, RoHs, Reach
Material	PVC Extrusion + Copper Wire
LED Type & Quantity	SMD5050 112pcs with 16 Pixels

■ Driver Require

1 Meter	> 18W
5 Meters	> 90W
10 Meters	> 180W
15 Meters	> 270W
20 Meters	> 360W



■ DESCRIPTION

LED Neon Flex is an innovative lighting system made in energy-saving LED technology. Its flexible, soft construction and uniform light color makes Neon Flex a perfect alternative to traditional neon tubes.

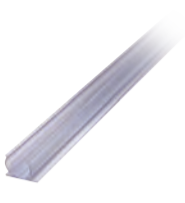
Wilgex LED Neon flex could be widely used as signage lighting in shop , as decorative lighting at home, in office and restaurant and as a building outline emphasizing lighting in architectural.

Neon Flex can be controlled by DMX, SPI, PWM, RF, DALI, dimmed or programmed.

We offer 3 years guarantee for indoor installations (or 2 years for outdoor installations).



Easy to cut



Aluminum channel
(1m, 2m, 3m)

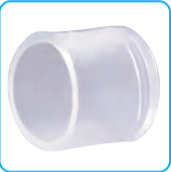


5cm Aluminum channel

IP65 (DIY Connector)



Front
connector



End cap



Heat-
shrink tube



Middle
Connector

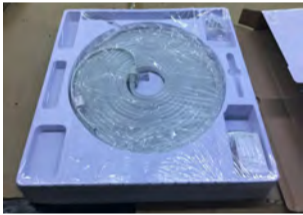


Pin 4 -Pins for RGB /
Pixel RGB color used

■ CUSTOM PACKAGE

1) Small Package For Distributors

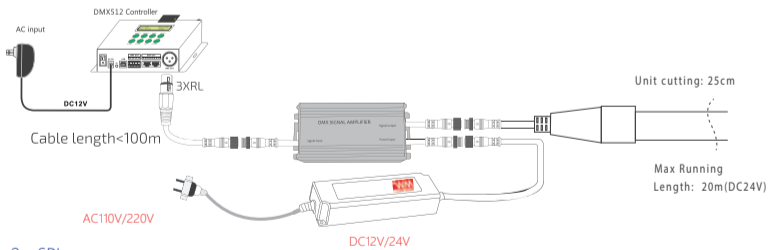
Giftbox



2) Bulk Package For Engineering (25m, 50m, 100m Roll)



1- DMX



2 - SPI

