

6. Product repair instruction

Dear customer,
 Thank you for your support. If the product is in trouble, please hand in the machine and the repair card to the local dealer for the maintenance.
 Please do not disassemble, unauthorized demolition is not allowed to free maintenance.

Maintenance information filling

Name	Contact information	Product model	Product failure phenomenon

Phone Link Screen Box



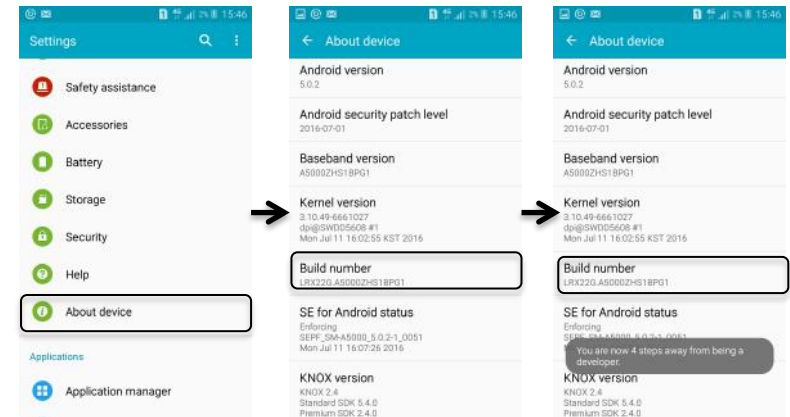
Plug  and Play

Quick Start Guide

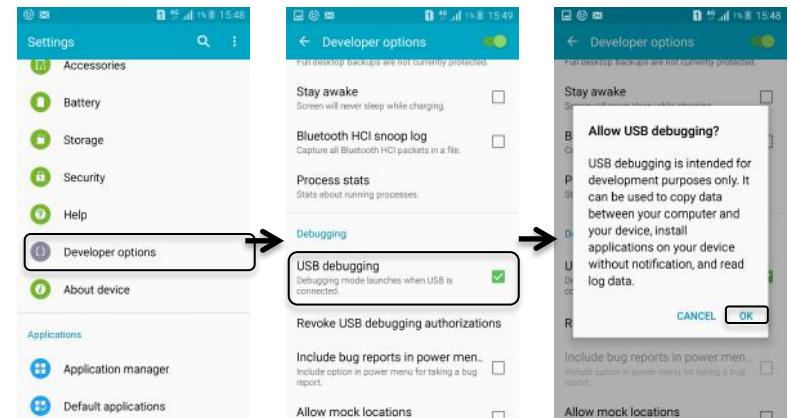
Catalogue

- 1.Product introduction.....2
- 2.Interface description.....3
- 3. Product packing list.....3
- 4.Installation instructions.....4
- 5.Mobile phone operating instructions.....6
- 6.Product repair instructions.....7

Android phone - Open USB debugging features



Open Android settings - click on "About Phone" - click "version number "5 times" - start "developer options"



Click "developer options" - click open "USB debugging" feature - click "OK"
 At this point, the USB debugging function has been successfully opened,
 using the data cable to connect the Phone Link Screen box
 Can be the same screen. (the first connection time will be longer)

5. Mobile phone operating instructions



- 1.Connect USB Cable
- 2.Trust allows phone connection



- 1.Enter the settings
- 2.Open developer option
- 3.Enable USB Debugging
- 4.Allow APP installation of unknown sources
- 5.Connect USB Cable to the box with Phone

Warm reminder:

Android mobile phone users, please note:

1. Before use, the phone needs to open the USB debugging function in order to achieve Mirror Display.
2. In the use of Phone link Screen box, you need to connect the dual 3.5 audio cable to the box's Audio IN and mobile phone headset interface to achieve the transmission of music to car audio.
iPhone users can dispense the above operation

Phone link Screen box



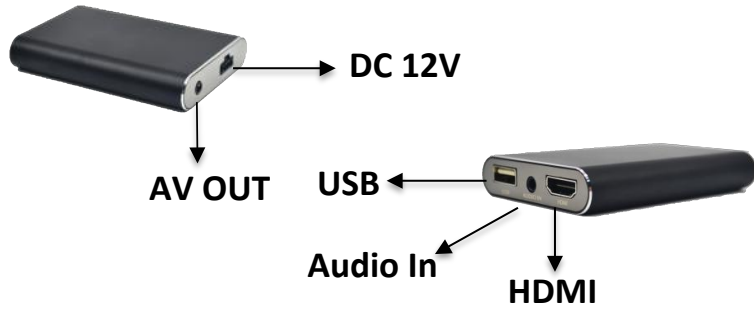
Starting Car Mirrorlink

Plug  And Play

1.Product intruction

In the course of driving, simple entertainment not only makes people feel comfortable, but also reduces the fatigue of drivers. Phone Link Screen box as the new car entertainment electronic products, realizing synchronous display mobile phone and car machine, non-destructive installation is simple operation, powerful function of mobile phone will be extended to the car entertainment life, realize the Internet era has brought to people's fun and convenient, improves safety of car owners driving on the way, plug and play, entertainment at the same time for mobile phone charging.

2.Interface description

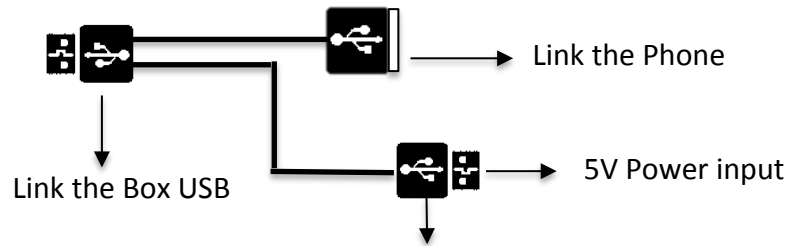


3.Product packing list

- 80cm CVBS Cable*1
- 1m 12V Power Cable*1
- 1m 3.5mm Audio Cable*1
- 80cm USB extension Cable*1
- User Instructions*1

4.Installation instructions

5V power supply connection mode (car charger or 5V 1A adapter)



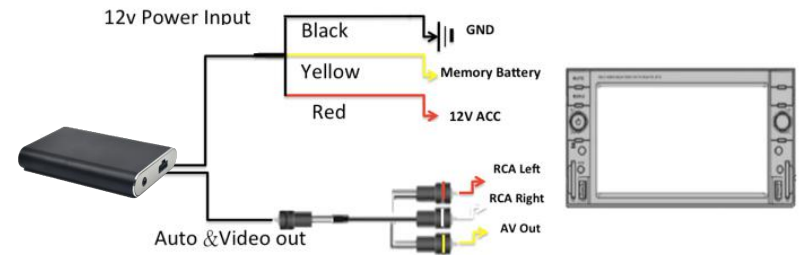
5V charging instructions: Current must reach 1A

Car built-in installation

1.Demolition of car audio equipmen

2.12V power line access to the car,As shown in the figure

3.AV line and car audio and video connection, as shown below



Users are advised to place the Phone link Screen box in the glove box.

