

Dome Shadowless Light New

3DM Series

3LINH	Line scan illumination
3LINL	
3LIN	
2LINS	
2LIN	
2OXL	Structured light
2LINM	
SDL	
STL	Ring illumination
RN	
RNH	
SRN	
HPR	Shadowless illumination
FPR	
DML	
LFR	
3DM	
2DM	
LFX	
FPQ	Bar illumination
RIH	
DL	
3BRH	
2BR	
2BRS	
2BRM	
3COH	Coaxial illumination
3CON	
COXR	
3COX	
COPA	
HSL	Multi-angle illumination
2SL	
SL	
RNMU	Back illumination
AOI	
2FTB/2FTR	
FTC	Waterproof illumination
2FT/3FT	
2PFT/3PFT	
LIP	Infrared light
IP	
IR	
UV	Ultraviolet light
Customized	
Customized	
PS	Controller
PD	
2DRC	
3STU	
APC	
DPC	
2APC	
DPA	Lenses
2ACC	
2DPC	
Area scan	Lenses
Line scan	

- ◆ High uniformity, large emitting area
- ◆ Lightweight design, high luminance
- ◆ Frame fixed method, more uniform stress, more fastness and more reliable when long time using.
- ◆ Flexible outline, can be customized.

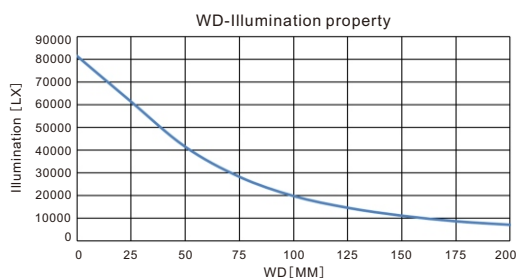


Applications

Reflect light, unflatness surface inspection / IC surface character inspection / condenser surface defect inspection

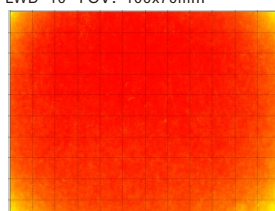
Illumination property diagram

Model : LTS-3DM198-W

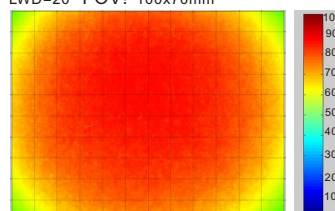


Uniformity distribution diagram

LWD=10 FOV: 100x70mm



LWD=20 FOV: 100x70mm

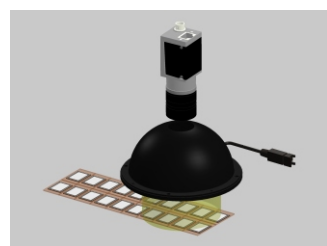


*Above diagram only for reference.

→ Customized



→ Imaging instance: IC chip defect inspection



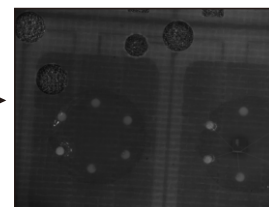
Content	IC chip defect inspection
Workpiece	IC chip
Light model	LTS-3DM116-IR850
Result	highlight IC chip defect

■ Workpiece photograph



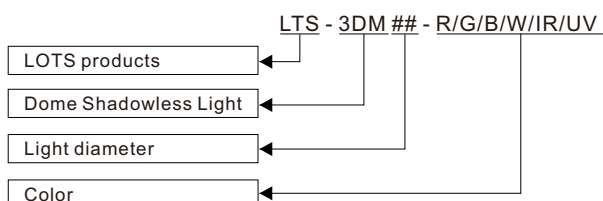
IC chip defect inspection

■ LTS-3DM116-IR850



When infrared light go across the glue, can see the chip under the glue and remove the reflection of glue surface.

→ Coding Rule



<http://www.lotsmv.com>

Customized color

On-site technical support

Sample free rent service

Dome Shadowless Light

3DM Series

→ Light Parameters

Product	Model	Voltage	Power	Color	Peak wavelength / color temperature	Weight	Option	Adapted controller	Dimen-sion	Com-mon	Remark
Dome Shadowless Light	LTS-3DM116	24V	6.5W		Red: 620~630nm	131 g	—	Strobe controller (P146)	1	Y	AI
			11.6W			318 g			2	Y	
	LTS-3DM175	24V	7.2W		Green: 525~530nm			318 g	Analog controller (P152)	3	
			12.0W								
	LTS-3DM198	24V	12.5W		Blue: 465~470nm	394 g		Digital controller (P159)	4	Y	
			21.2W								
	LTS-3DM260	24V	17.3W		(color temperature)	629 g			4	Y	
			28.8W								
* UV & IR light can be customized as required.											

* UV & IR light can be customized as required.

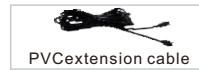
★ 1) Operating environment: Temperature 0-50°C.
Humidity 20-85% (Non-condensation)

2) Life-span: 50000h(Reduce 50% luminance of factory default)

3) Value-added service: One year free technical support, sample free rent

※ 1) PVC extension cable: high flexibility, bending resistance, high temperature resistance, apply to use inside of device.

2) High flexibility extension cable: harder and more abrasive resistance than PVC, apply to drag chain system production line.

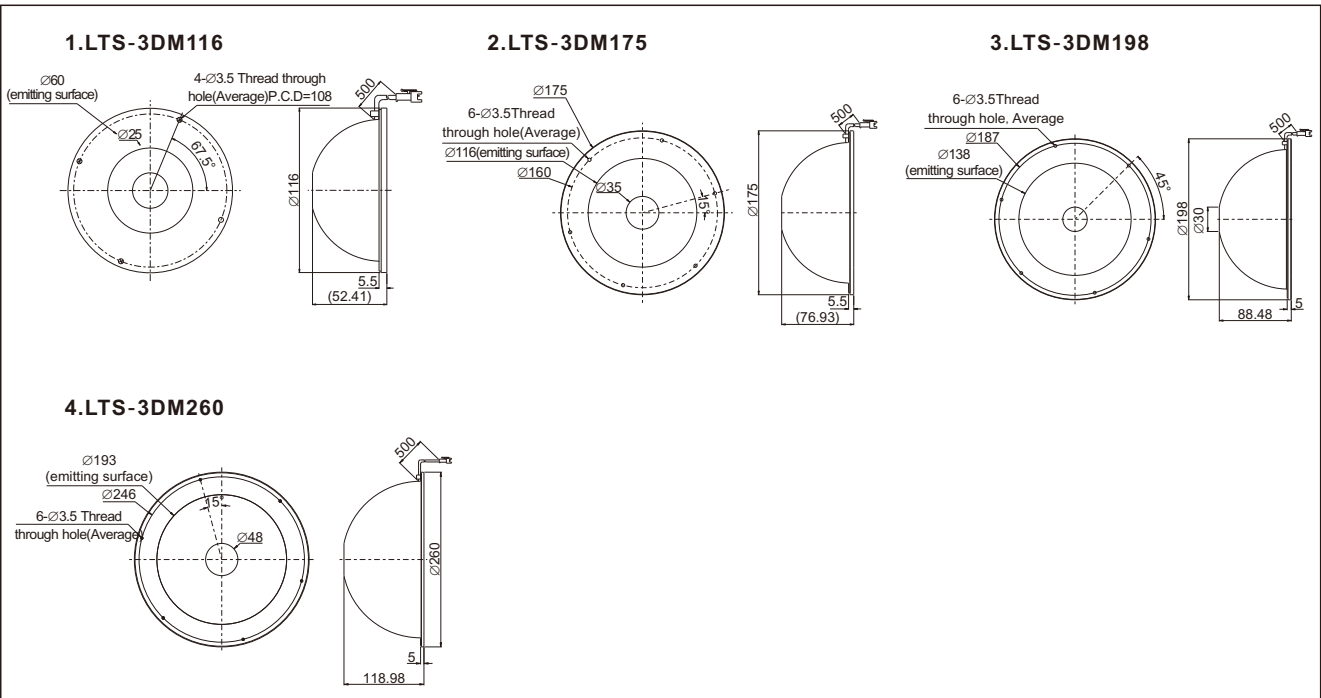


PVC extension cable



High flexibility extension cable

→ Boundary dimension (mm)



Customized color

On-site technical support

Sample free rent service



<http://www.lotsmv.com>