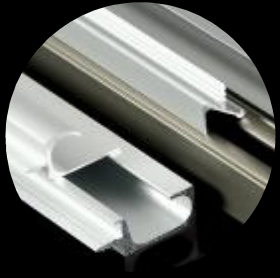
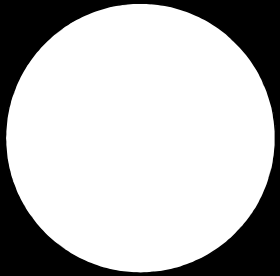




Profile-Handle For Furniture Fronts



Tiradores para frentes de muebles.



Алюминиевый профиль-ручка

NO:YF-590 0.373/M



NO:YE-020 0.650/M



NO:YE-019 0.700/M



NO:AF-113 0.460/M



NO:YE-014 0.247KG/M



NO:B-2356 0.494KG/M



NO:YE-016 0.650KG/M



NO:YF-589 0.540KG/M



C20-26	KG/M: 0.564	C012	KG/M: 0.474	C22-03	KG/M: 0.490	C22-79	KG/M: 0.463
	19.2		19.5		19.6		18.8
C023	KG/M: 0.466	B-2353	KG/M: 0.697	AI149	KG/M: 0.526	AB-004	KG/M: 0.425
	19.5		18.8		19.5		19.1
AI151	KG/M: 0.459	F-038	KG/M: 0.488	F-038	KG/M: 0.488	YE-321	KG/M: 0.503
	19.5		19		19		19.4
C1672	KG/M: 0.462	G-098	KG/M: 0.521	YE-242	KG/M: 0.697	F-051	KG/M: 0.373
	18.6		18.5		18.7		18.7
F-051A	KG/M: 0.377	YE-1178	KG/M: 0.649	AI016	KG/M: 0.447	G-092	KG/M: 0.681
	19.3		19		19.4		18.5
YE-020	KG/M: 0.649	C782	KG/M: 0.411	YE-021	KG/M: 0.609	C1263	KG/M: 0.361
	18.6		19.7		16.6		16.2

C22-19	KG/M: 0.537	C23-33	KG/M: 0.406	C074	KG/M: 0.375	C180	KG/M: 0.412
C1062	KG/M: 0.378	C-519	KG/M: 0.385	C388	KG/M: 0.463	C506A	KG/M: 0.490
AI042	KG/M: 0.334	C1205	KG/M: 0.369	C1605	KG/M: 0.490	C973	KG/M: 0.365
AI035	KG/M: 0.345	C1037	KG/M: 0.386	F-541	KG/M: 0.385	YE-1226	KG/M: 0.417
C508	KG/M: 0.504	C873	KG/M: 0.603	C386	KG/M: 0.464	C22-36	KG/M: 0.325
G-110	KG/M: 0.494	C999	KG/M: 0.524	C405	KG/M: 0.477	AJ-332	KG/M: 0.491

C005C	KG/M: 0.394	C20-29	KG/M: 0.367	C20-30	KG/M: 0.310	C20-27	KG/M: 0.479
C21-50	KG/M: 0.394	C1025	KG/M: 0.334	C1024	KG/M: 0.339	C1023	KG/M: 0.348
AI169	KG/M: 0.379	C22-18	KG/M: 0.407	F-036	KG/M: 0.386	F-115	KG/M: 0.331
F-053	KG/M: 0.418	F-029	KG/M: 0.438	C21-77	KG/M: 0.419	AC-447	KG/M: 0.384
E-221	KG/M: 0.401	C21-78	KG/M: 0.413	C20-35	KG/M: 0.322	C20-36L	KG/M: 0.083
							T:0.8MM
C20-31	KG/M: 0.483	C20-28L	KG/M: 0.081	C20-37	KG/M: 0.369	C20-38L	KG/M: 0.075
							T:0.8MM

AC-253	KG/M: 0.482	AC-231	KG/M: 0.420	AH-040	KG/M: 0.522	AG-019	KG/M: 0.473
C090	KG/M: 0.428	AG-022	KG/M: 0.524	C20-33	KG/M: 0.292	AC-192	KG/M: 0.428
YE-1179	KG/M: 0.707	F-109	KG/M: 0.507	AC-230	KG/M: 0.551	AC-230A	KG/M: 0.529
AI106	KG/M: 0.648	C22-04	KG/M: 0.418	F-041	KG/M: 0.422	C20-39	KG/M: 0.397
AH-104	KG/M: 0.419	C20-50	KG/M: 0.495	G-099	KG/M: 0.343	E-199	KG/M: 0.486
C028	KG/M: 0.372	C047	KG/M: 0.441	AI023	KG/M: 0.460	F-040	KG/M: 0.333

E-229	KG/M: 0.353	AI185	KG/M: 0.357	YE-372	KG/M: 0.450	C783	KG/M: 0.322
C23-31	KG/M: 0.521	A22-34	KG/M: 0.396	YE-1177	KG/M: 0.322	YE-018	KG/M: 0.389
C014	KG/M: 0.351	C608	KG/M: 0.546	B2356	KG/M: 0.494	C20-21	KG/M: 0.504
YE-370	KG/M: 0.398	AG-229	KG/M: 0.439	YE-975	KG/M: 0.329	YE-015	KG/M: 0.319
B-2357	KG/M: 0.331	AC-853	KG/M: 0.352	YE-369	KG/M: 0.295	YE-014	KG/M: 0.247
B-2355	KG/M: 0.363	YE-022	KG/M: 0.272	C23-32	KG/M: 0.353	YE-017	KG/M: 0.281

C20-48	KG/M: 0.813	C20-47	KG/M: 0.692	AG-049	KG/M: 0.871	AG-048	KG/M: 0.731
AB-099	KG/M: 0.383	AB-100	KG/M: 0.193	C618	KG/M: 0.313	C619	KG/M: 0.195
C22-12	KG/M: 0.414	C22-11	KG/M: 0.240	YC-1079	KG/M: 0.278	YC-1080	KG/M: 0.168
E-184	KG/M: 0.479	E-186	KG/M: 0.260	C23-40	KG/M: 0.511	C23-41	KG/M: 0.433
AJ-485	KG/M: 0.275	AJ-486	KG/M: 0.186	YE-399	KG/M: 0.340	YE-398	KG/M: 0.221
C23-37	KG/M: 0.347	C23-36	KG/M: 0.383	B-2316	KG/M: 0.627	C018	KG/M: 0.212

HGB-1192	KG/M: 0.584	D-2353	KG/M: 0.697	DP-112	KG/M: 0.556	HGX-020	KG/M: 0.649
HGB-598	KG/M: 0.534	HGB-590	KG/M: 0.363	DP113	KG/M: 0.458	HGB-194	KG/M: 0.539
D-2356	KG/M: 0.494	D-2357	KG/M: 0.331	FGX-018	KG/M: 0.389	FGX-017	KG/M: 0.281
FGX-021	KG/M: 0.609	FGX-022	KG/M: 0.272	HGX-019	KG/M: 0.698	DP-114	KG/M: 0.412
HGX-015	KG/M: 0.320	HGX-016	KG/M: 0.642	HGX-014	KG/M: 0.246	HHW-567	KG/M: 0.364
HHW-1269	KG/M: 0.336	HHW-1268	KG/M: 0.427	HHW-1270	KG/M: 0.718	HHW-1271	KG/M: 0.822

AI145	KG/M: 0.344	AI152	KG/M: 0.444	E-224	KG/M: 0.300	YE-725	KG/M: 0.412
E-142	KG/M: 0.412	E-143	KG/M: 0.393	AI147	KG/M: 0.328	AI146	KG/M: 0.335
YE-019	KG/M: 0.698	YE-016	KG/M: 0.642	C041	KG/M: 0.460	E-188	KG/M: 0.755
C008	KG/M: 0.658	AI025	KG/M: 0.770	F-069	KG/M: 0.687	YE-078	KG/M: 0.721
AC-095	KG/M: 0.300	E-180	KG/M: 0.301	E-181	KG/M: 0.497	F-105	KG/M: 0.357
E1685	KG/M: 0.285	G-079	KG/M: 0.427	E-223	KG/M: 0.511	AJ-508	KG/M: 0.281

AC1911	KG/M: 0.236	AC1912	KG/M: 0.381	YF-3078	KG/M: 0.345	YF-3079	KG/M: 0.233
YE-1605	KG/M: 0.274	YE-1606	KG/M: 0.191	F-2319	KG/M: 0.392	F-2318	KG/M: 0.272
AC-1912	KG/M: 0.381	AC-1911	KG/M: 0.236	AJ-1323	KG/M: 0.416	AJ-1324	KG/M: 0.269
AC-2015	KG/M: 0.537	AC-1601	KG/M: 0.392	E-524	KG/M: 0.466	E-522	KG/M: 0.494
F-1938	KG/M: 0.383	C-22-34	KG/M: 0.396	G-153	KG/M: 0.451	AJ-483	KG/M: 0.268
C-28-50	KG/M: 0.751	C27-55	KG/M: 0.401	C28-27	KG/M: 0.468	AC-1198	KG/M: 0.461