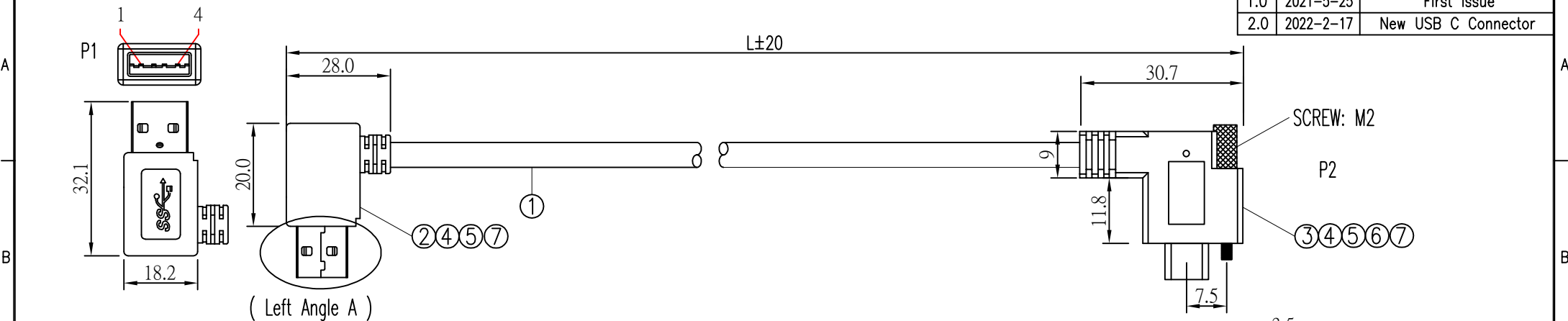


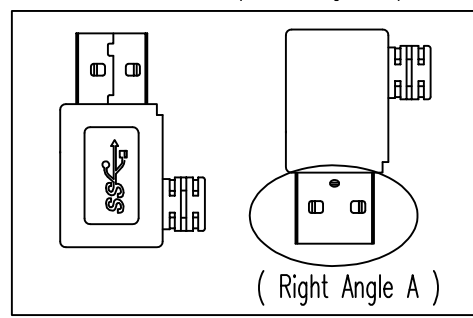
1 2 3 4 5 6 7 8

Customer Name:

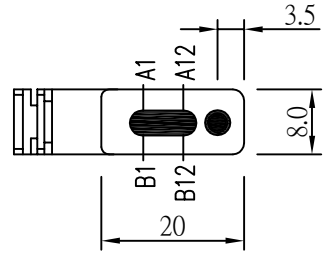
REV.	Date	Description
1.0	2021-5-25	First Issue
2.0	2022-2-17	New USB C Connector



(Left Angle A)



(Right Angle A)



P2

PIN OUT	
P1	P2
1	VBUS
3	A6
2	A7
6	A2
5	A3
7	GND
4	
8	B10
9	B11
SHELL	BRAID
	SHELL

A4-A9-B4-B9=VBUS
A1-A12-B1-B12-SHELL=GND

NOTE:

- TESTING CONDITIONS:
 - A: INSULATION RESISTANCE: 10MΩ; B: VOLTAGE: DC400V/10ms
 - C: CONDUCTOR RESISTANCE 5Ω;
 - D: CABLE MUST BE OPEN/SHORT/MISWIRE 100% TEST.
 - E: Processed BY EMI
- PACKING: 1PCS/PE-BAG

7	AR	COPPER FOIL	
6	1	SCREW: M2	
5	AR	OVER MOLDING: 35P PVC BLACK	
4	AR	INNER MOLDING: LDPE	
3	1	USB 3.1 C TYPE MALE: NICKEL PLATED SHELL, BLACK INSULATION	
2	1	USB 3.1 A TYPE MALE: NICKEL PLATED SHELL, BLUE INSULATION	
1	1	USB 3.1 CABLE: UL2725, [30AWG*1P+AL/MY]*2+30AWG*1P+22AWG*2C+AL/MY+AeB(65%TC), BLACK PVC JACKET, OD:4.5±0.2MM	
NO	Q'TY	DESCRIPTION	REMARK

P-shine P-SHINE ELECTRONIC TECH LTD				SCALE: NONE	UNIT: mm
DRAWING		MPN:		PAGE:	1/1
CHECKED		CUST P/N:		DWG NO:	MF-2202174
RECHECKED		SPEC:	USB 3.1 AM TO CM CABLE		
APPROVED		RFQ NO.			

1 2 3 4 5 6 7 8 A4 R1D1000