

# HB09 LED High Bay Light

Professional LED lamp replacing 500-1000W Metal halide lamp  
Philips 3030 LED light source



Product Name : HB09 LED High Bay Light

Part No: TY-HB09-100-240W

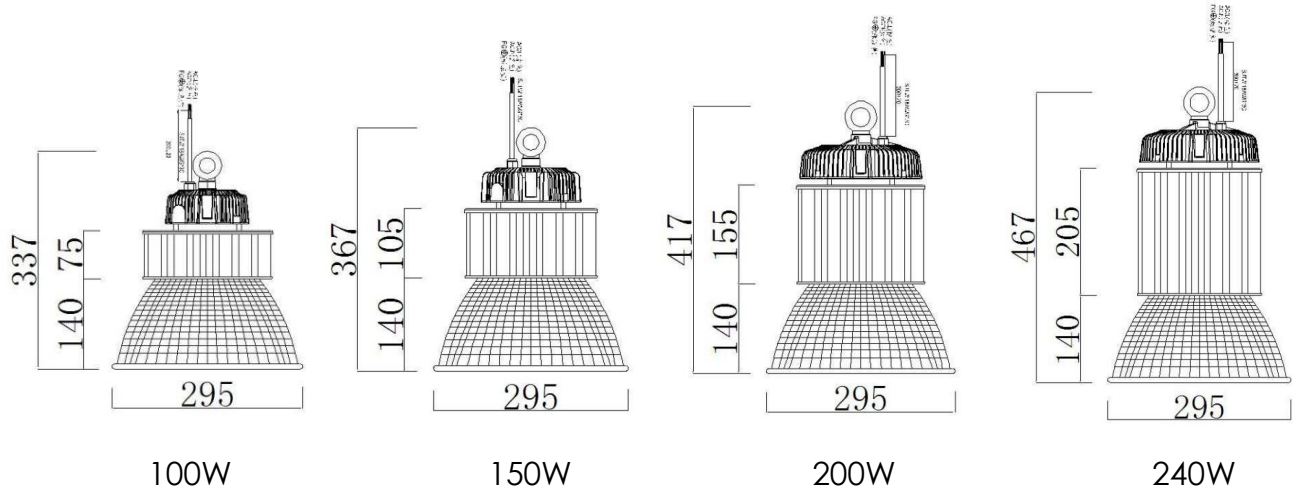
Approval No : 2018012601



Tonya guarantee that all products being sold are QC passed, and reached the standard for shipment with 5 years warranty



# 1. Dimensional Drawing(mm)



PN	TY-HB09XX-100W	TY-HB09XX-150W	TY-HB09XX-200W	TY-HB09XX-250W
Size (∅ *H)	Φ295*H337mm	Φ295*H367mm	Φ295*H417mm	Φ295*H467mm

Notes:

1. All dimension units are millimeters.
2. All dimension tolerance is  $\pm 1$ mm unless otherwise noted.

## 2. Features

- Multi-Chip on Lead Frame, Single Module LED Package Design
- System Design Integrating Power Supply, LED Light Engine, and Heat Sink
- Over Current, Over Voltage, Over Heat, Thunder Protection
- Choice of Correlated Color Temperatures
- (Specification Re-Defined Accordingly)
- Long lifespan for LED 50,000 hrs
- 100%Recycle,No Pollution,and UV,IR

## 3. Specification

### ● Optical

Input Voltage	90~295V AC, 50/60Hz
Power Consumption	≅ 155W (of Total System)
Power Factor	≧0.95
Surge	Pass
Fixed Current	Deviation < 1%
Power Efficiency	>90%
EMI Grade	EMI Class B
Protection	Over Current/Over Voltage/Over Heat/Thunder Protection
Luminance Efficacy	>140lm/W

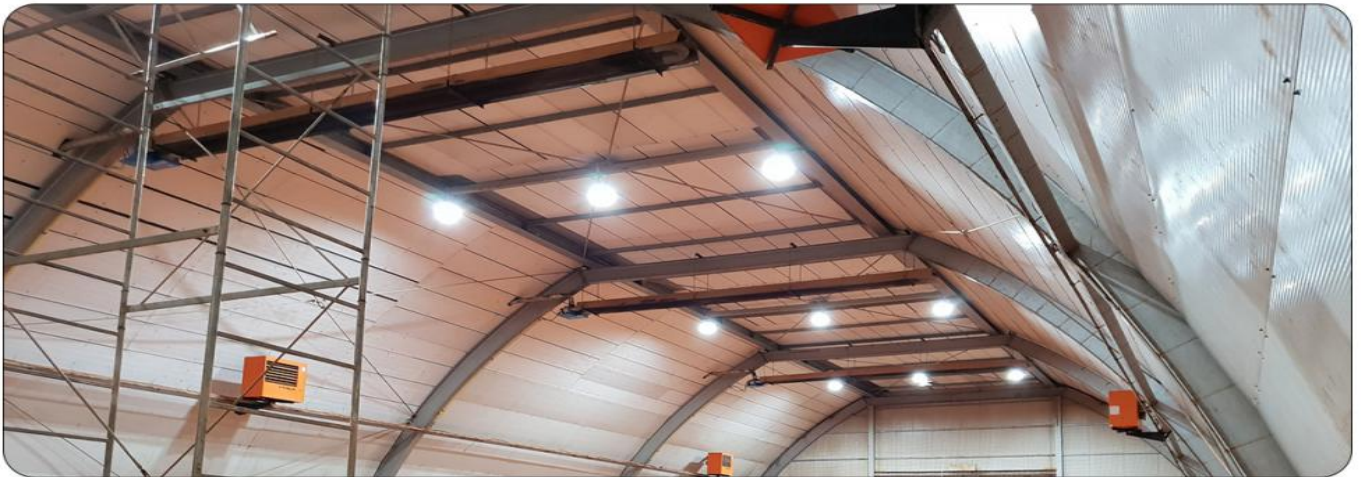
### ● Electrical

Par NQ Parameter	TY-HB09XX-100W	TY-HB09XX-150W	TY-HB09XX-200W	TY-HB09XX-250W
Input voltage	AC85V~277V 50/60HZ	AC85V~277V 50/60HZ	AC85V~277V 50/60HZ	AC85V~277V 50/60HZ
LED type of smd	100PCS Philips smd 3030	154PCS Philips smd 3030	203PCS Philips smd 3030	252PCS Philips smd 3030
Light Fixture Luminance (lm)	14000	21000	28000	35000
Color Temperature	3000-6500k	3000-6500k	3000-6500k	3000-6500k
Driver	Meanwell HBG-100	Meanwell HBG-160	Meanwell HBG-200	Meanwell HBG-240
IP Rating	IP65	IP65	IP65	IP65

### ● Mechanical and System

PN	TY-HB09XX-100W	TY-HB09XX-150W	TY-HB09XX-200W	TY-HB09XX-250W
IP Level	IP65	IP65	IP65	IP65
Housing	Al alloy	Al alloy	Al alloy	Al alloy
Dimension	25x25x28cm	25x25x33cm	25x25x35cm	25x25x39cm
NET Weight	4 Kg	5 Kg	6 Kg	7 Kg
Heat Solution	Convection	Convection	Convection	Convection

## 4. Application



## 5. Operation and Storage Condition

- Operation Ambient Temperature -40 to +60°C, Relative Humidity 20~90%
- Input Voltage AC85-277V, 50/60Hz
- Storage Ambient Temperature -40 to +85°C, Relative Humidity 5~95%
- Mounting Height : Suitable for 8~40m height

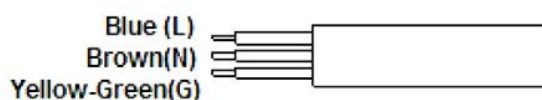
## 6. Certificate

- LED Lighting Certificated with CE
- Power System Certificated with UL
- The Whole High Bay light Certificated with CE

## 7. Assembly and Installation

### ● Assembly-Electricity

- Blue : Line
- Brown : Neutral
- Yellow-Green : Ground



### ● Installation

- The entire series of LED High Bay light are designed with wide range voltage, the voltage range is ac85-265volts, the frequency is 50/60Hz.
- Installation tool: A adjustable wrench group.
- Installation Steps :
  1. Tighten Axle Screw, and Locate Screw
  2. Connecting the power line of LED Flood Light to the power supplier ,finish the installation procedure.
  3. No necessary using other devices for LED High Bay light installation such as stabilizer, regulator and so on.
  4. Opening the light and lifting the buckle is unallowable.  
Soaking in the water is unallowable.

## 8. Warning

- Do Not Use Other Devices for LED High Bay light Installation Such as Stabilizer, Regulator ...etc
- Do Not Open the Light Engine
- Do Not Soak the Floodlight into Water
- Do Not Light up the System Without Grounding
- Do Not Use Dimmer

## 9. Warranty

- 5 Years Warranty Starts from Taking Delivery of Goods a Day. The Warranty Content Includes the Damage of All Components, Such as LED Light Source and Power Supply...etc.
- The Calculation of Warranty Period with Turn on the Light for a Day 8-10 Hours is Limited. As Everyday Longer Than 10 Hours, Then Gradually Decrease According to Comparison Warranty Time Limit.
- The High Bay light Must Operate at the Common Normal Environment. As in Order to be Faced by the Sea Road in 3 Kilometers or to Use in the Bad Environment Such as Tunnel, Warranty Period is Within 1

Year.

- This company must be authorized to have maintenance cost under the following situations.
- The Floodlight hasn't Operated According to the Stipulation Under the Common Normal Environment and Thus causes the Breakdown Destruction.
- Damaging of the Product Are Irresistible (Disasters, Person Disaster, Earthquake, Thunder Stroke, Typhoon...etc), the Artificial Destruction (Fallen Wound, to Strike, to Hit Hard and so on), the Artificial Mistake (Losing, Wars, Not to Take Care of Properly and so on) or Other Unusual Factor Result.
- Customers or Other Guys Add Attach, The Expansion the Revision to repair by themselves.