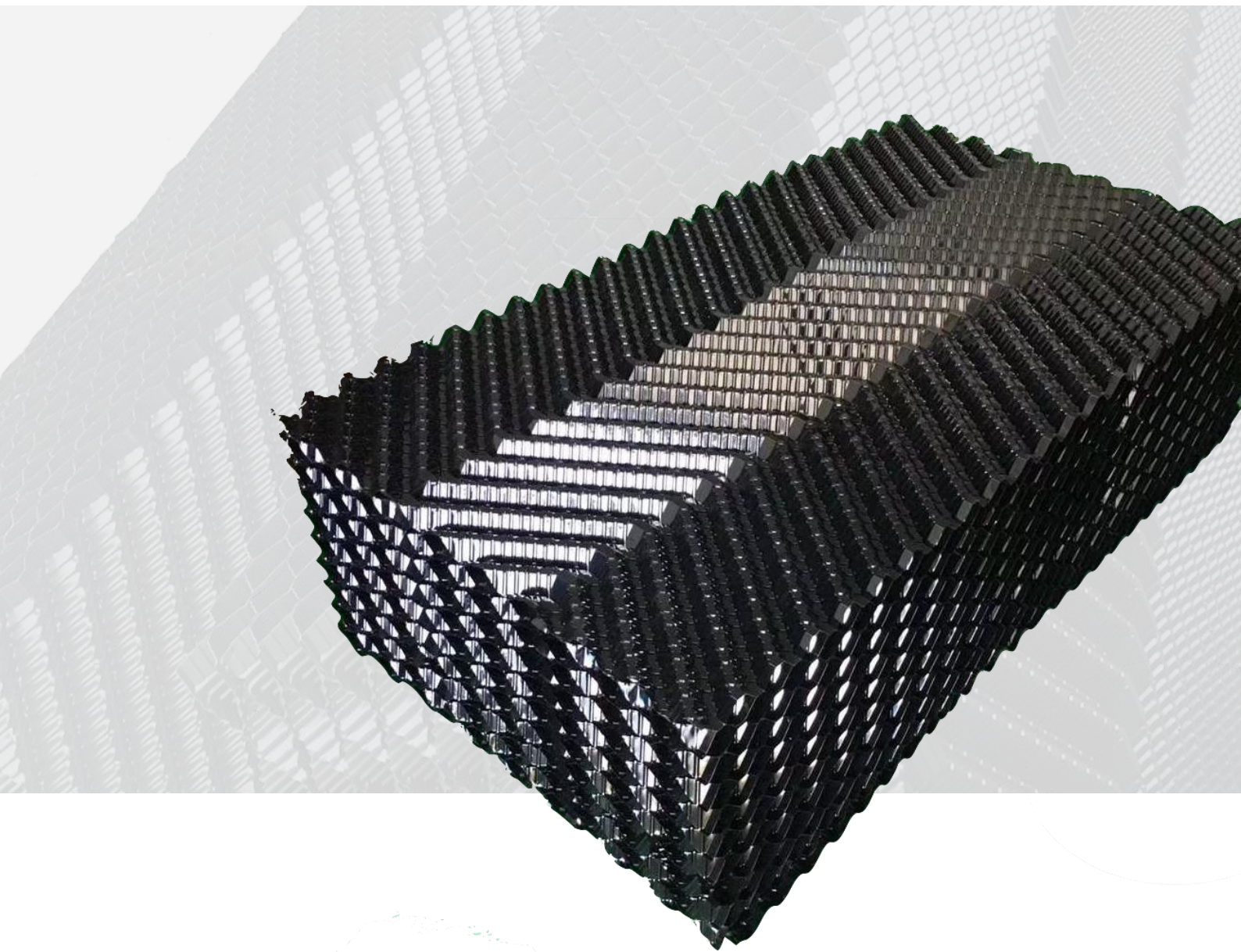
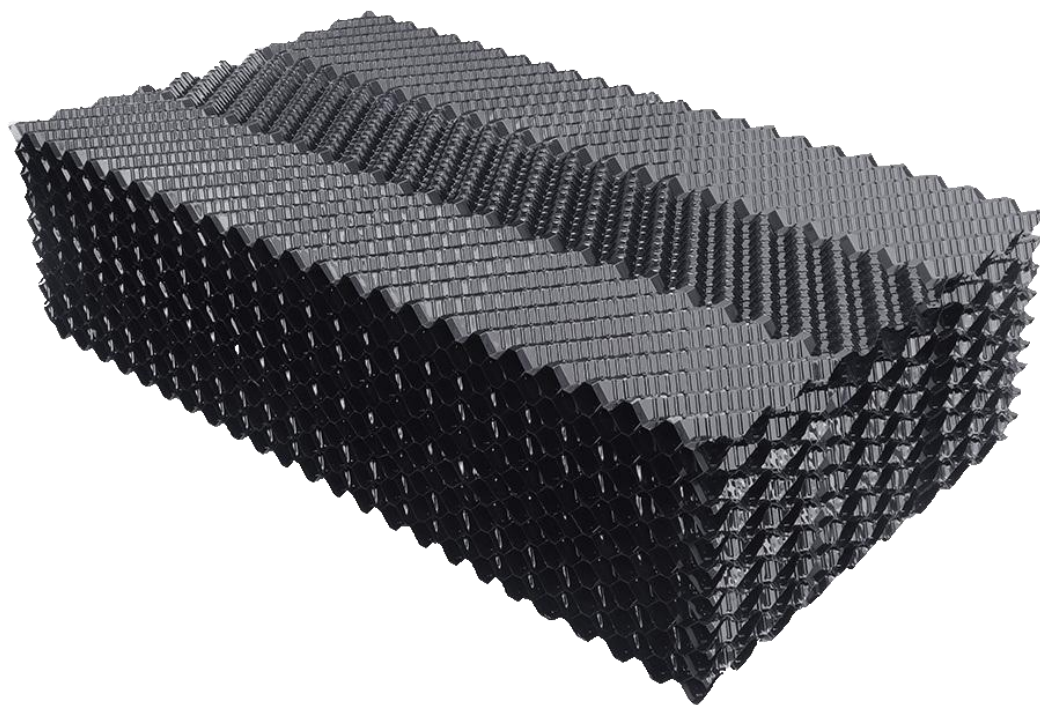


COUNTER FLOW FILM FILL



LXN series



Newin LXN Film Fill adopt high grade PVC raw material vacuum forming, sheet thickness uniformity, high strength and toughness. The maximum heat transfer area and the best airflow passage space can be obtained by using opaque and uv-resistant materials, special chute design can withstand higher water load without causing excessively high pressure drop.

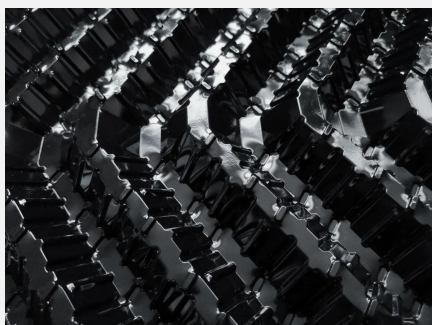
Applicable for counter flow cooling tower, with SGS test to keep high quality infill to get the high efficiency of the cooling tower. Inform us the tower model or size, we will estimate the Nos of sheets needed for your cooling tower replacing. Unique bonding technology allows the fills to stick together tightly.

Shenzhen Newin Machinery Co., Ltd.

No.510, Building 12, Tiedong, China South City,
Pinghu, Longgang, Shenzhen, China. 518100
0086 755 23077266 | www.newinmachine.com

Pictures in Details

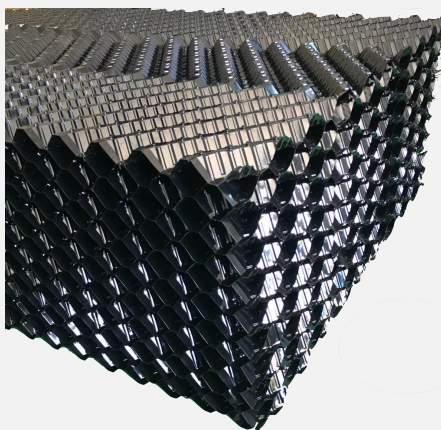
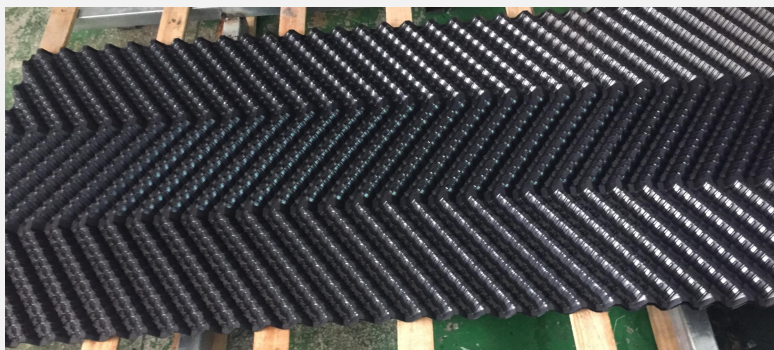
Newin supplies customized service for different request on film fill length, width, material or thickness. Standard flat material thickness in 0.32mm thickness and Newin developed a new technology solution for high inlet water temperature condition.



Good heat dissipation, large flux, low resistance, uniform distribution, good water distribution, no clogging, no agglomeration, large specific surface area, improve oxygen transfer rate and utilization rate.

Complete specifications, according to customer requirements, custom specifications and sizes to meet the needs of different fields.

Fills shall be fabricated from rigid, corrugated PVC sheets that are conducive to cooling and resistant to UV, rot fungus, organic/inorganic solvents, acids, alkalis and chemicals commonly found in Cooling Tower waters.



The surface is smooth and bright, pressure strength is strong, it will not break when touched, non-toxic and non-irritating, more safer.

It is made of high-grade PVC hard cloth by hot pressing, and weather-resistant and flame-resistant raw materials are added to PVC to make it not easy to age.

Good chemical stability, acid resistance, alkali resistance and organic solvent corrosion

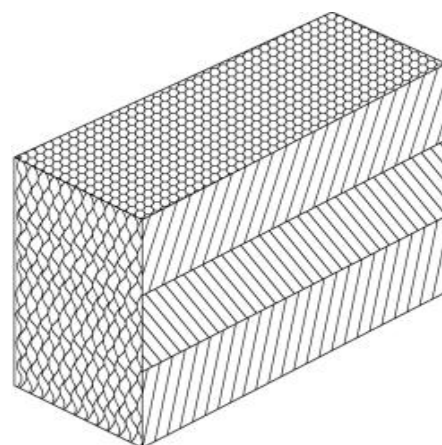
Shenzhen Newin Machinery Co., Ltd.

No.510, Building 12, Tiedong, China South City,
Pinghu, Longgang, Shenzhen, China. 518100
0086 755 23077266 | www.newinmachine.com

Properties

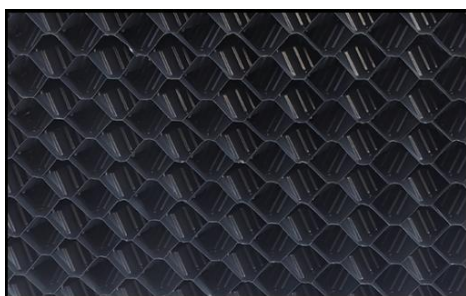
With different request in LXN film fill, like length and width, materials or thickness, etc, please inform us your detailed request to get correct solution and offer. Newin could cover all customer requirements. Fill media in flame retardant or anti-bacterial execution are also available on request.

Module Length (Max)	mm	Depend on customer demand
Module Width	mm	230/460/695
Module Depth	mm	—
Flute Height	mm	19
Flute Corrugation Angle	degrees	—
Surface Area	m ² /m ³	—
Sheet Thickness - Before Forming	mm	0.32
Sheet Thickness - After Forming	mm	0.28
Max. application temp. (short time) - PVC	° C	60
Max.operating temp. (short time) - PP	° C	95
<i>Customized thickness available for special request. Contact Newin for details!</i>		



Applicable Commercial Standards

Sheets material is strictly followed below SGS test with ASTM standards. Each property or all properties as below tested by your products are also available on request.



Property	Test Method	Values	
Specific Gravity	ASTM D792-13 Method B	1.426g/cm ³	
Oxygen Index	ASTM D2863-13	34.50%	
Tear Strength	ASTM D1004-13	X direction	111N
		Y direction	121N
Tensile Test	ASTM D 882-12	Tensile Strength	X direction 51.1MPa
			Y direction 45.3Mpa
		Elongation at Break	X direction 87%
			Y direction 56%

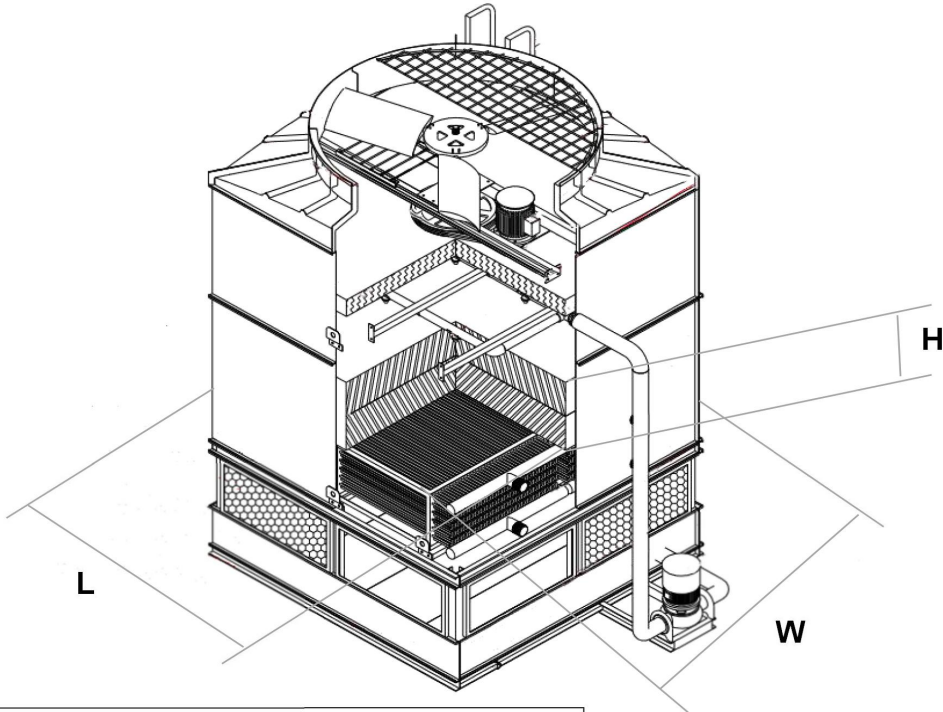
*Values shown above based on SGS Test No.: GZIN1708039662PS by Newin
Statements and methods presented are based upon the best available information and practices known to Newin. Conditions of use may vary and are beyond control, the user should undertake sufficient tests to determine the suitability for any intended use of the material.*

Shenzhen Newin Machinery Co., Ltd.

No.510, Building 12, Tiedong, China South City,
Pinghu, Longgang, Shenzhen, China. 518100
0086 755 23077266 | www.newinmachine.com

Field Data for Counter Flow Film Fill Replacement

Fill in below measurements data for your maintenance cooling tower or repairing projects demand quality and reliability, count on Newin, site visit or maintenance service, engineered to fit the cooling tower fills or components.



Field Data for Counter Flow Fill Replacement		
Dimension	Description	Field Measurement
L	Inside casing length	
W	Inside casing width	
H	Inside fill space total height	
Nos of Cells		

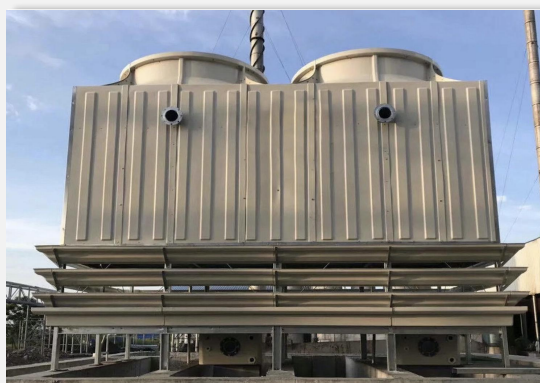
Shenzhen Newin Machinery Co., Ltd.	
Drawing No.	NW-2005034-Fill

Shenzhen Newin Machinery Co., Ltd.

No.510, Building 12, Tiedong, China South City,
Pinghu, Longgang, Shenzhen, China. 518100
0086 755 23077266 | www.newinmachine.com

Reference List

Newin supplies production and replacement service worldwide to satisfy different customers' request. One - stop supply for all cooling tower with parts and service.



Shenzhen Newin Machinery Co., Ltd.

No.510, Building 12, Tiedong, China South City,
Pinghu, Longgang, Shenzhen, China. 518100
0086 755 23077266 | www.newinmachine.com

Jobsite Storage Procedures for PVC Film Fills

1. Guidelines for the Storage of Nested Sheets

a. Fill sheets cannot be exposed to direct sunlight for any length of time when client received. The solid block of plastic created by the nested sheets will absorb heat rapidly and distort the exposed edges. **Inside ventilated environment storage is strongly recommended.**

b. If inside ventilation not possible then use of heavy duty tarps or waterproof boardas to cover. **Clear or black covers must not be used, and covers must not be wrapped tightly around the nested sheets.**

c. Do not stack more than five feet(1.5m) high, supported on flat level ground is required. All fill sheets must remain clean and dry prior to assembly.

※ Newin shipped PVC film fills use pallet with sun protection films or wood box to avoid the fills exposed to sunlight directly.



2. Guidelines for the Storage of Assembled Product

a. Modules must not be stored in any environment where the air temperature exceeds 49°C (120°F). When considering outside storage, the skin temperature of modules must not be allowed to reach more than 60°C (140 °F). Due to solar heat gain, the dark PVC material rapidly absorbs the sun's energy, the surface temperature is higher than ambient.

b. Modules must be stacked such that the plane of the sheets are in the vertical position , similar to the manner of their position in cooling tower.

c. Modules requiring storage outside must be covered .
·Clear or black covers must not be used.
·Covers must not be wrapped tightly around the media.

Shenzhen Newin Machinery Co., Ltd.

No.510, Building 12, Tiedong, China South City,
Pinghu, Longgang, Shenzhen, China. 518100
0086 755 23077266 | www.newinmachine.com