



## Test Report

No.T51910210400TC

Date: FEB 27, 2019

Page 1 of 4

JIAN PLASTIC & METAL PRODUCTS LTD  
NO.3-1, SOUTH GAOBU BLVD, GAOBU TOWN, DONGGUAN CITY,  
GUANGDONG PROVINCE, CHINA, ZIP CODE:523278

The following samples were submitted and identified by/on behalf of the client as:

### ALUMINUM

Buyer : WORLD WIDE  
Manufacturer : CHINA  
Country of Origin : CHINA  
Country of Destination : WORLD WIDE  
Requested Age Grading : 3+  
Sample Receiving Date : FEB 22, 2019  
Testing Period : FEB 22, 2019 TO FEB 26, 2019



SGS-CSTC Testing Technology Services Co., Ltd.  
Shenzhen Branch Testing Center Hardlines

Unless otherwise agreed in writing, this document is issued by the Company subject to its General Conditions of Service printed overleaf, available on request or accessible at <http://www.sgs.com/en/Terms-and-Conditions.aspx> and, for electronic format documents, subject to Terms and Conditions for Electronic Documents at <http://www.sgs.com/en/Terms-and-Conditions/Terms-e-Documents.aspx>. Attention is drawn to the limitation of liability, indemnification and jurisdiction issues defined therein. Any holder of this document is advised that information contained hereon reflects the Company's findings at the time of its intervention only and within the limits of Client's instructions, if any. The Company's sole responsibility is to its Client and this document does not exonerate parties to a transaction from exercising all their rights and obligations under the transaction documents. This document cannot be reproduced except in full, without prior written approval of the Company. Any unauthorized alteration, forgery or falsification of the content or appearance of this document is unlawful and offenders may be prosecuted to the fullest extent of the law. Unless otherwise stated the results shown in this test report refer only to the sample(s) tested and such sample(s) are retained for 30 days only.

Attention: To check the authenticity of testing / inspection report & certificate, please contact us at telephone: (86-755) 8307 1443, or email: [CN.Doccheck@sgs.com](mailto:CN.Doccheck@sgs.com)

SGS Bldg, No. 4, Jianghao Industrial Park, No. 430, Jihua Road, Banlan, Longgang District, Shenzhen, China 518129 t (86-755) 25328888 f (86-755) 83106190 www.sgsgroup.com.cn  
中国·深圳·龙岗区坂田吉华路430号江灏工业园4栋SGS大楼 邮编: 518129 t (86-755) 25328888 f (86-755) 83106190 e [sgs.china@sgs.com](mailto:sgs.china@sgs.com)



Test Report

No. T51910210400TC

Date: FEB 27, 2019

Page 2 of 4

| Test Requested |  | Conclusion                     |
|----------------|--|--------------------------------|
| 1.             | CPSIA section 101 - Total Lead content   | --                             |
| 1.1            | CPSIA section 101(f) (1) – Lead in paint/similar surface coating material  | NOT APPLICABLE<br>(SEE REMARK) |
| 1.2            | CPSIA section 101(a) (2) – Lead in accessible substrate materials (Including Children’s Metal Jewelry)   | PASS                           |
| 2.             | US California Proposition 65(County of Alameda Court Case No. RG-10-514803 [Consolidated with Case No. RG 10-545680 and RG 10-545687]) – Cadmium Content | PASS                           |
| 3.             | Client’s Requirement – Cadmium Content   | PASS                           |

Remark : There were no surface coating found in the said submitted sample.

\*\*\*\*\* FOR FURTHER DETAILS, PLEASE REFER TO THE FOLLOWING PAGE(S) \*\*\*\*\*

Signed for and on behalf of  
SGS-CSTC Standards Technical  
Services Co., Ltd. Shenzhen Branch Testing Center



Qu Ping, Kiky  
Dept. Manager



SGS-CSTC Standards Technical Services Co., Ltd.  
Shenzhen Branch Testing Center Hardlines

Unless otherwise agreed in writing, this document is issued by the Company subject to its General Conditions of Service printed overleaf, available on request or accessible at <http://www.sgs.com/en/Terms-and-Conditions.aspx> and, for electronic format documents, subject to Terms and Conditions for Electronic Documents at <http://www.sgs.com/en/Terms-and-Conditions/Terms-e-Documents.aspx>. Attention is drawn to the limitation of liability, indemnification and jurisdiction issues defined therein. Any holder of this document is advised that information contained hereon reflects the Company's findings at the time of its intervention only and within the limits of Client's instructions, if any. The Company's sole responsibility is to its Client and this document does not exonerate parties to a transaction from exercising all their rights and obligations under the transaction documents. This document cannot be reproduced except in full, without prior written approval of the Company. Any unauthorized alteration, forgery or falsification of the content or appearance of this document is unlawful and offenders may be prosecuted to the fullest extent of the law. Unless otherwise stated the results shown in this test report refer only to the sample(s) tested and such sample(s) are retained for 30 days only.

Attention: To check the authenticity of testing / inspection report & certificate, please contact us at telephone: (86-755) 8307 1443, or email: [CN.Doccheck@sgs.com](mailto:CN.Doccheck@sgs.com)

SGS Bldg, No. 4, Jianghao Industrial Park, No. 430, Jihua Road, Banlan, Longgang District, Shenzhen, China 518129 t (86-755) 25328888 f (86-755) 83106190 www.sgs.com.cn  
中国·深圳·龙岗区坂田吉华路430号江灏工业园4栋SGS大楼 邮编: 518129 t (86-755) 25328888 f (86-755) 83106190 e [sgs.china@sgs.com](mailto:sgs.china@sgs.com)



# Test Report

No. T51910210400TC

Date: FEB 27, 2019

Page 3 of 4

## Results:

### 1.2 CPSIA - Lead in Accessible Substrate Materials

Method (metal materials): With reference to CPSC-CH-E1001-08.3 - Standard Operating Procedure for Determining Total Lead (Pb) in Children's Metal Products (Including Children's Metal Jewelry)

| Test Item(s)              |           |             | Lead (Pb)       |
|---------------------------|-----------|-------------|-----------------|
| Permissible Limit **(ppm) |           |             | 100             |
| Specimen Description      | Alias No. | Tracing No. | Result(s) (ppm) |
| 1. Silvery metal part     | 1         | 1           | ND              |

\*\* Permissible Limit applies to a children's product manufactured after 14 August 2011 (Public Law 110-314 (Consumer Product Safety Improvement Act of 2008) and its Amendments Public Law 112-28)

- Note:
- ppm = parts per million
  - ND = Not Detected (lower than MDL)
  - MDL = Method Detection Limit = 10 ppm
  - 1% = 10000 mg/kg = 10000 ppm

### 2. US California Proposition 65 – Cadmium Content

Method: Acid Digestion

Analysis was performed by Inductively Coupled Plasma Optical Emission Spectrometer (ICP-OES)

| Test Item(s)          |           |             | Cadmium (Cd)    |
|-----------------------|-----------|-------------|-----------------|
| Specimen Description  | Alias No. | Tracing No. | Result(s) (ppm) |
| 1. Silvery metal part | 2         | 1           | ND              |

- Note:
- ppm = parts per million
  - ND = Not Detected (lower than MDL)
  - MDL = Method Detection Limit = 5 ppm

### Summary of permissible limits of Cadmium requirement(s):

| Requirement(s)   | Permissible Limit of Cadmium (ppm) | Effective Date |
|--|------------------------------------|----------------|
| California Proposition 65 (County of Alameda Court Case No. RG-10-514803 [Consolidated with Case No. RG 10-545680 and RG 10-545687]) | 300                                | Current        |



SGS-CSTC (China) Technical Services Co., Ltd.  
Shenzhen Branch Testing Center Hardlines

Unless otherwise agreed in writing, this document is issued by the Company subject to its General Conditions of Service printed overleaf, available on request or accessible at <http://www.sgs.com/en/Terms-and-Conditions.aspx> and, for electronic format documents, subject to Terms and Conditions for Electronic Documents at <http://www.sgs.com/en/Terms-and-Conditions/Terms-e-Documents.aspx>. Attention is drawn to the limitation of liability, indemnification and jurisdiction issues defined therein. Any holder of this document is advised that information contained hereon reflects the Company's findings at the time of its intervention only and within the limits of Client's instructions, if any. The Company's sole responsibility is to its Client and this document does not exonerate parties to a transaction from exercising all their rights and obligations under the transaction documents. This document cannot be reproduced except in full, without prior written approval of the Company. Any unauthorized alteration, forgery or falsification of the content or appearance of this document is unlawful and offenders may be prosecuted to the fullest extent of the law. Unless otherwise stated the results shown in this test report refer only to the sample(s) tested and such sample(s) are retained for 30 days only.

Attention: To check the authenticity of testing / inspection report & certificate, please contact us at telephone: (86-755) 8307 1443, or email: [CN.Doccheck@sgs.com](mailto:CN.Doccheck@sgs.com)

SGS Bldg, No. 4, Jianghao Industrial Park, No. 430, Jihua Road, Banlan, Longgang District, Shenzhen, China 518129 t (86-755) 25328888 f (86-755) 83106190 www.sgs.com.cn  
 中国·深圳·龙岗区坂田吉华路430号江灏工业园4栋SGS大楼 邮编: 518129 t (86-755) 25328888 f (86-755) 83106190 e [sgs.china@sgs.com](mailto:sgs.china@sgs.com)

### 3. Cadmium Content

Method: With reference to IEC62321-5:2013

Analysis was performed by Inductively Coupled Plasma Optical Emission Spectrometer (ICP-OES) / Atomic Absorption Spectrometer (AAS)

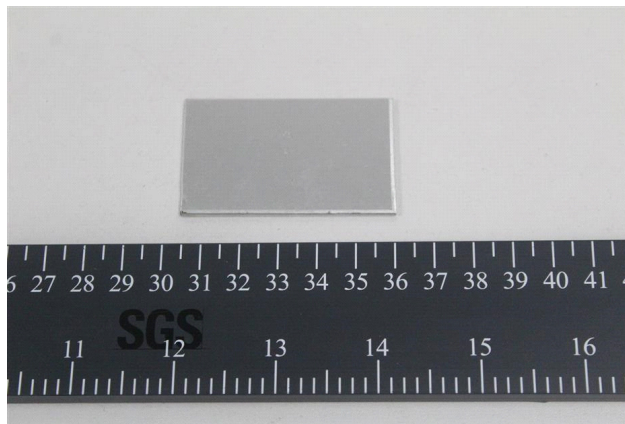
| Test Item(s) | Unit  | 1  | MDL | Client's Limit |
|--------------|-------|----|-----|----------------|
| Alias No.    | --    | 3  | --  | --             |
| Tracing No.  | --    | 1  | --  | --             |
| Cadmium (Cd) | mg/kg | ND | 5   | 75             |

#### Specimen Description:

1. Silvery metal part

- Note:
- mg/kg = milligram per kilogram
  - MDL = Method Detection Limit
  - ND = Not Detected (lower than MDL)

#### Sample Photo:



SGS authenticate the photo on original report only

\*\*\* End of Report \*\*\*



Unless otherwise agreed in writing, this document is issued by the Company subject to its General Conditions of Service printed overleaf, available on request or accessible at <http://www.sgs.com/en/Terms-and-Conditions.aspx> and, for electronic format documents, subject to Terms and Conditions for Electronic Documents at <http://www.sgs.com/en/Terms-and-Conditions/Terms-e-Documents.aspx>. Attention is drawn to the limitation of liability, indemnification and jurisdiction issues defined therein. Any holder of this document is advised that information contained hereon reflects the Company's findings at the time of its intervention only and within the limits of Client's instructions, if any. The Company's sole responsibility is to its Client and this document does not exonerate parties to a transaction from exercising all their rights and obligations under the transaction documents. This document cannot be reproduced except in full, without prior written approval of the Company. Any unauthorized alteration, forgery or falsification of the content or appearance of this document is unlawful and offenders may be prosecuted to the fullest extent of the law. Unless otherwise stated the results shown in this test report refer only to the sample(s) tested and such sample(s) are retained for 30 days only.

Attention: To check the authenticity of testing / inspection report & certificate, please contact us at telephone: (86-755) 8307 1443, or email: [CN.Doccheck@sgs.com](mailto:CN.Doccheck@sgs.com)

SGS-CSTC (China) Technical Services Co., Ltd.  
Shenzhen Branch Testing Center Hardlines

SGS Bldg, No. 4, Jianghao Industrial Park, No. 430, Jihua Road, Banlan, Longgang District, Shenzhen, China 518129 t (86-755) 25328888 f (86-755) 83106190 www.sgs.com.cn  
中国·深圳·龙岗区坂田吉华路430号江灏工业园4栋SGS大楼 邮编: 518129 t (86-755) 25328888 f (86-755) 83106190 e [sgs.china@sgs.com](mailto:sgs.china@sgs.com)