

THERMAL CAMERA FOR PCB FAULT DIAGNOSTICS

The second generation
Troubleshoot PCB & temperature measurement with Thermal Imaging



Comparison Analysis

Build customized case picture library, which support comparison with current picture, to find out faulty parts



Accurate & efficient

Quickly temperature measurement of whole board to find out the hottest pot. Increase your success rate in finding faults and repairing PCB boards



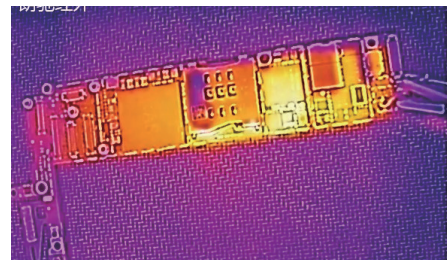
Easy to operate

One-Button-see function can detect out the source of leakage and short circuit in 3 seconds



safe & clean

Non-touch way which keep your safety away from rosin troubleshot way, with clean board surface.



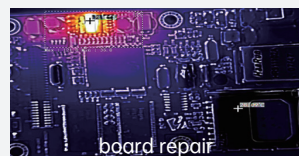
APPLICATION



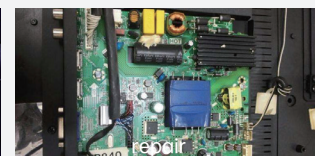
Cellphone main board



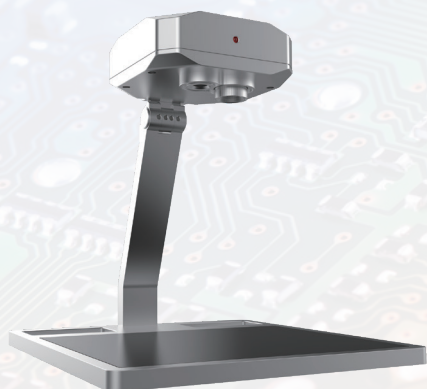
Digital electronic product



PC/server



Home appliance



The IIT ShortCam is an efficient diagnostic tool that utilizes cloud services and thermal imaging technology for intelligent diagnosis of PCBA faults. Through the ShortCam diagnostic software on the PC, it utilizes dual-spectrum interleaved positioning technology and intelligent dual-spectrum fusion algorithms to display real-time temperature data of various chips, resistors, and capacitors on the tested motherboard. This assists users in instantly determining the operating status of the motherboard.

PRODUCT SPECIFICATIONS

Thermal Camera	Sensor technology	Uncooled VOx Microbolometer
	Resolution	160*120
	Spectral band	7.5μm~13.5μm
	FOV	57°×44°
Visible Camera	Resolution	1920*1080
Thermal Camera	Display mode	Visible light imaging / infrared thermal imaging / dual light fusion imaging
	Video output	RJ45
	Image storage format	JPEG
	Video storage format	MP4
Physical Features	Fixture dimension	181*180*170mm
	Weight	1.1kg (including fixture base)
	Installation	Removable installation
Power	Input voltage	12V DC
	Power consumption	2.2W, ≤3W
Operating Environment	Storage temperature	-20°C~60°C
	Operating temperature	0°C~50°C
	Humidity	95% RH
Temperature Measurement	Temperature measurement function	Full-scale temperature measurement
	Measurement distance	12.5cm
	Measurement accuracy	±5°C or ±5%
	Measurement range	0°C~400°C

Shenzhen Launch Digital Technology Co.,Ltd.

Service hotline:4001-386-389

5B, Building F2, TCL Science Park,No.1001 Zhongshan Park Road,Xili Street, Nanshan District, Shenzhen