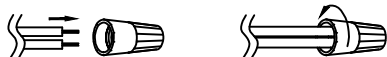


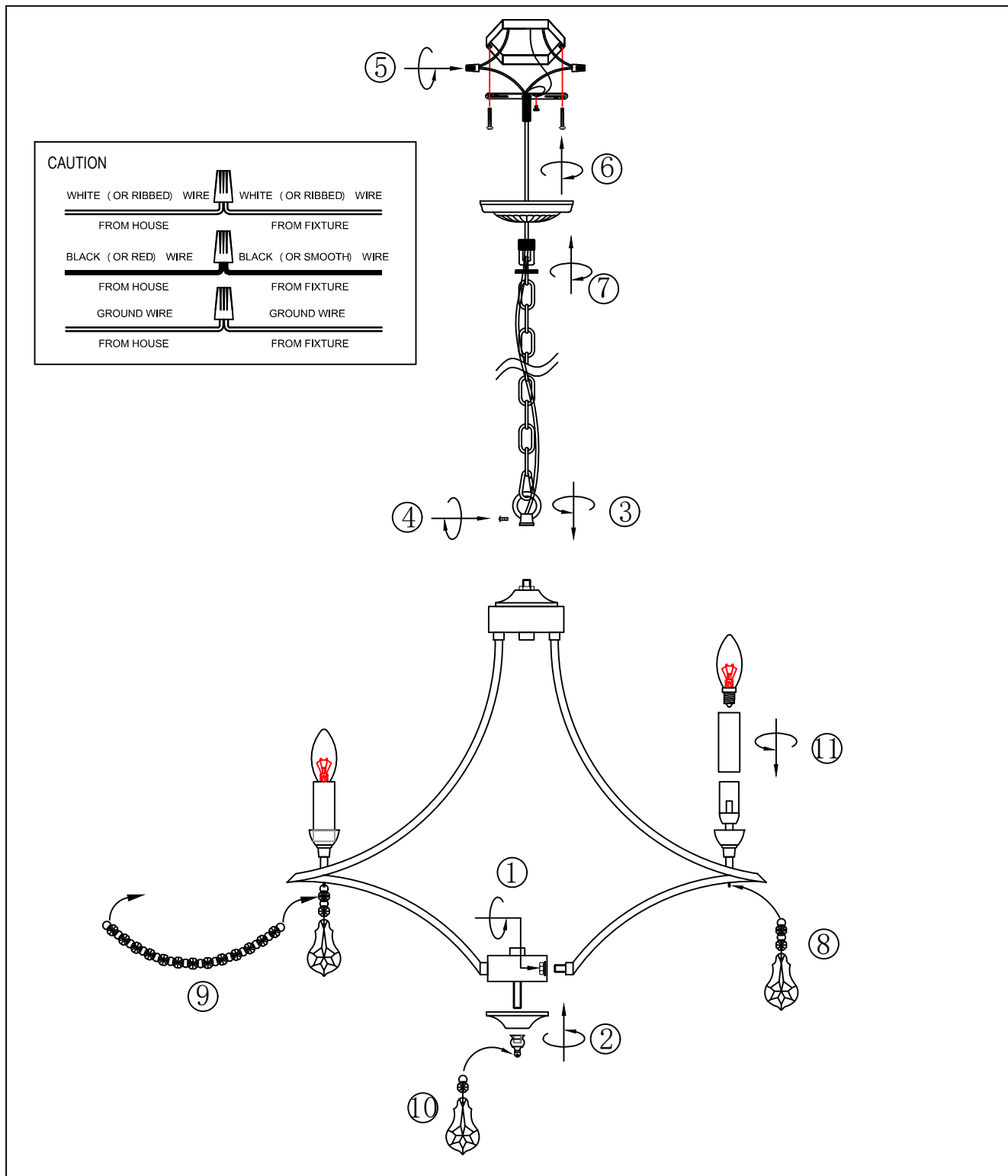
# USER MANUAL

## CAUTION

- 1) BE SURE THE ELECTRICITY TO THE WIRES YOU ARE WORKING ON IS SHUT OFF; EITHER THE FUSE IS REMOVED OR THE CIRCUIT BREAKER IS TURNED OFF. TURNING THE POWER OFF USING THE LIGHT SWITCH IS NOT SUFFICIENT TO PREVENT ELECTRICAL SHOCK.
- 2) DO NOT INSTALL OR USE THE LIGHT FIXTURE IF ANY PART IS MISSING OR DAMAGED. CONTACT YOUR DEALER FOR REPLACEMENT OR MISSING PARTS.
- 3) TO PROTECT THE FINISH, DO NOT USE CLEANSERS OR ABRASIVES DURING MAINTENANCE.
- 4) TO AVOID POSSIBLE FIRE OR ELECTRICAL SHOCK, MAKE SURE NO BARE WIRE STRANDS ARE EXPOSED OUTSIDE WIRE CONNECTORS.



## INSTALLATION DIAGRAM



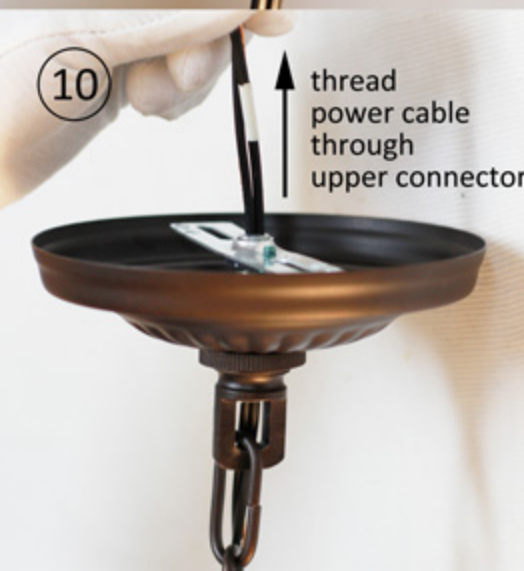
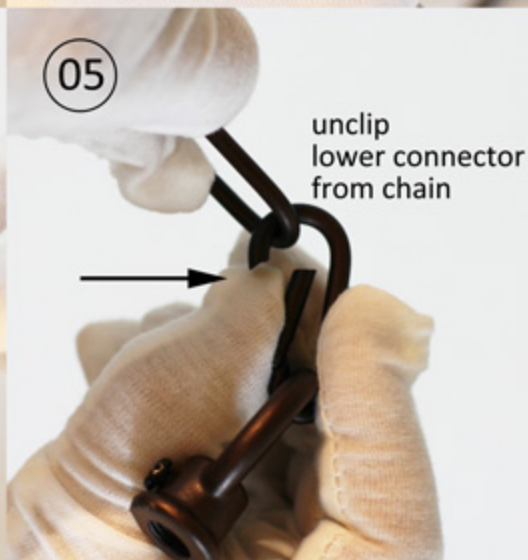
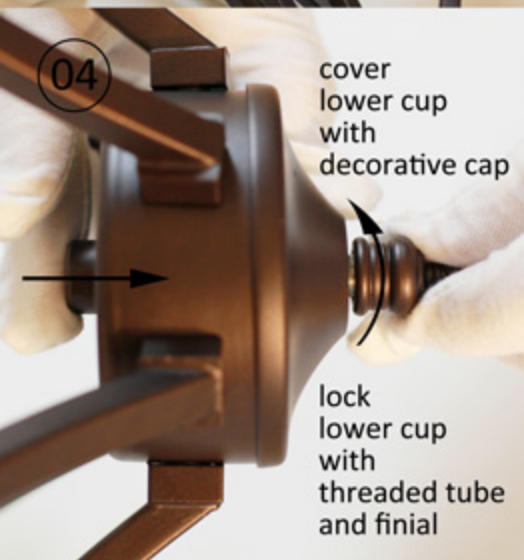
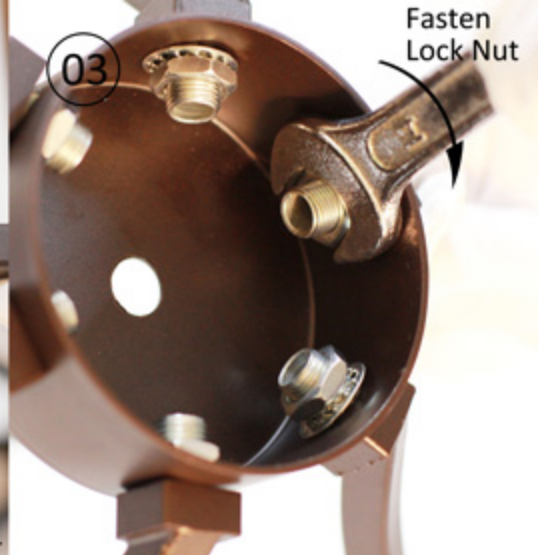
## SPECIFICATION

Input Voltage: 110~120V 50/60Hz  
 Wattage: E12 Max 40W per socket, bulb not included  
 Fixture Size: length 24.41in ( 62cm ) , width 24.41in ( 62cm ) , height 27.56in ( 70cm )  
 Chain Length: 55.12in ( 140cm ) , adjustable

Thank you for shopping with us, please feel free to contact us if you have any issue on product installation or application. Please save this user manual as purchase proof and future reference.

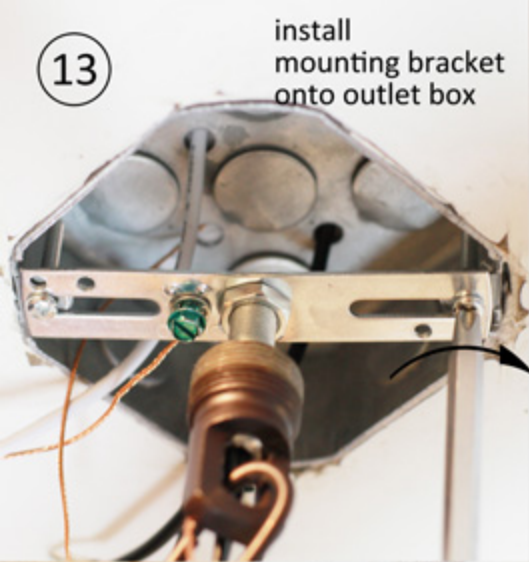
[www.mirrea.com](http://www.mirrea.com)

**mirrea**®



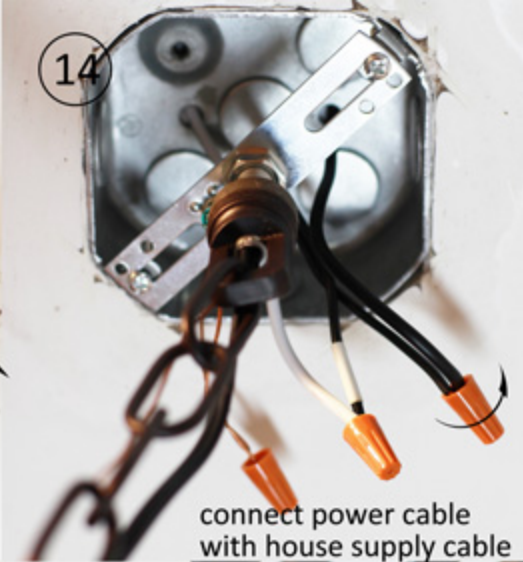
13

install mounting bracket onto outlet box



14

connect power cable with house supply cable



15

move up canopy and nut, fasten nut



16

clip lower connector with chain



17

put up crystal string onto arm



18

TIP to put crystal with spring pin:



a) pinch the spring pin;  
b) extruded the spring end;  
c) thread the spring end through ring or crystal.

19

connect arms with crystal bead string



20

put up crystal string onto finial



21

mount socket sleeve, mount bulb

