

USER MANUAL

CAUTION

- 1) BE SURE THE ELECTRICITY TO THE WIRES YOU ARE WORKING ON IS SHUT OFF; EITHER THE FUSE IS REMOVED OR THE CIRCUIT BREAKER IS TURNED OFF. TURNING THE POWER OFF USING THE LIGHT SWITCH IS NOT SUFFICIENT TO PREVENT ELECTRICAL SHOCK.
- 2) DO NOT INSTALL OR USE THE LIGHT FIXTURE IF ANY PART IS MISSING OR DAMAGED. CONTACT YOUR DEALER FOR REPLACEMENT OR MISSING PARTS.
- 3) TO PROTECT THE FINISH, DO NOT USE CLEANSERS OR ABRASIVES DURING MAINTENANCE.
- 4) TO AVOID POSSIBLE FIRE OR ELECTRICAL SHOCK, MAKE SURE NO BARE WIRE STRANDS ARE EXPOSED OUTSIDE WIRE CONNECTORS.

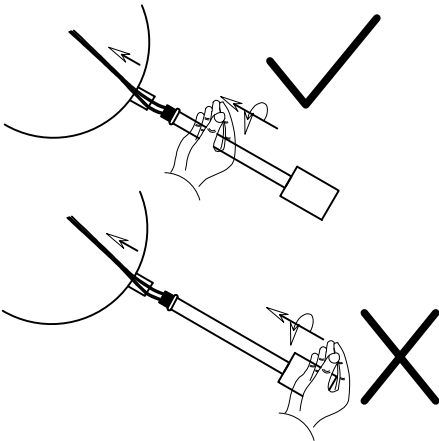


INSTALLATION DIAGRAM

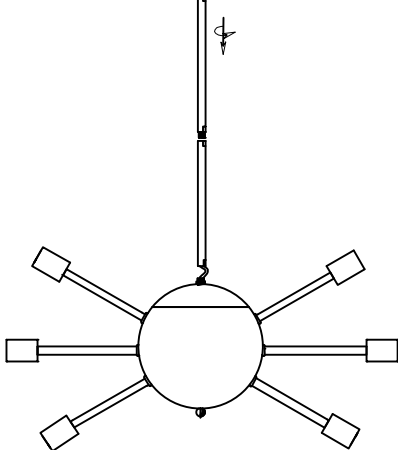
1, Install the arm onto the ball.

CAUTION:

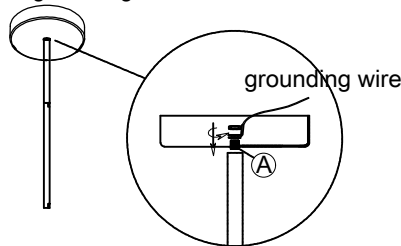
- a) Don't hold lamp socket cap, hold the slim arm to twist;
- b) Twist the arm 10times anticlockwise before pushing the wire into the ball.



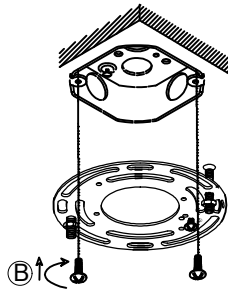
2, Thread the main wire through the down rods, and mount the down rods.



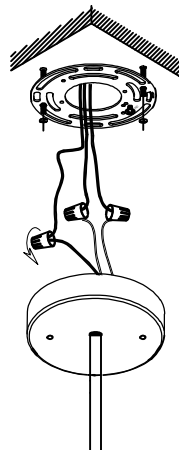
3, Mount the ceiling plate with the down rod. Fix the grounding wire onto the screw A.



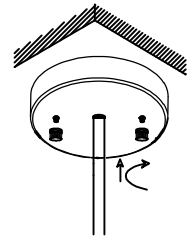
4, Fix the mount bracket onto the ceiling with screws B.



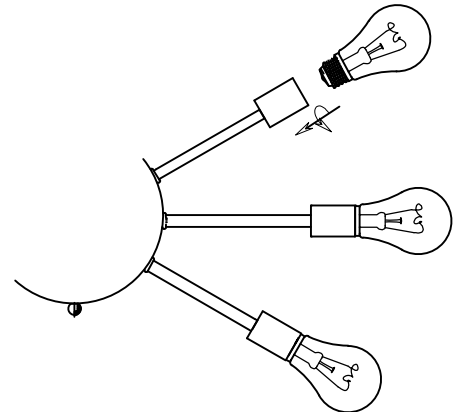
5, Wire connection.



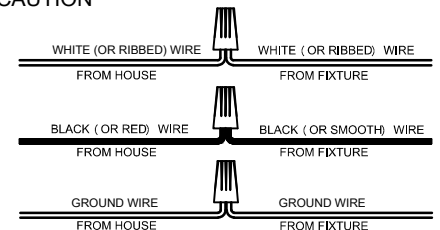
6, Mount fixture mainframe onto the mount bracket.



7, Mount the bulbs.



CAUTION



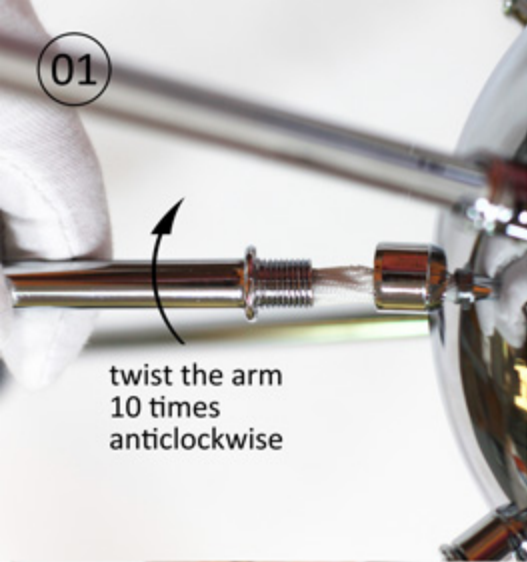
SPECIFICATION

Input Voltage: 110~120V 50/60Hz
 Wattage: E26 Max 60W *12, Bulb Not Included
 Product Size: Ø 28.35in(72cm) * H 14.96in(38cm) after bulbs are mounted
 3pcs 11.81in(30cm) down rods, 1pcs 5.91in(15cm) down rod, 1pcs sloped ceiling adaptor

Thank you for shopping with us, please feel free to contact us if you have any issue on product installation or application. Please save this user manual as purchase proof and future reference.

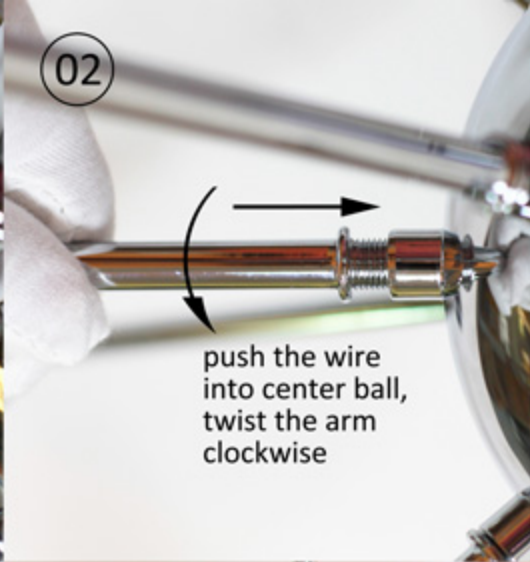
www.mirrea.com

mirrea®



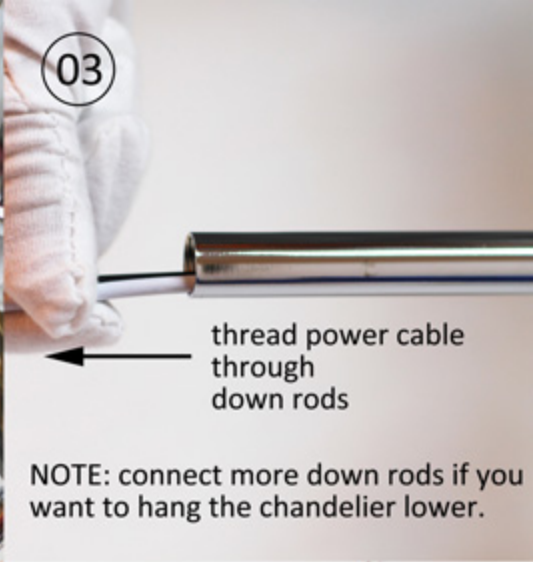
01

twist the arm
10 times
anticlockwise



02

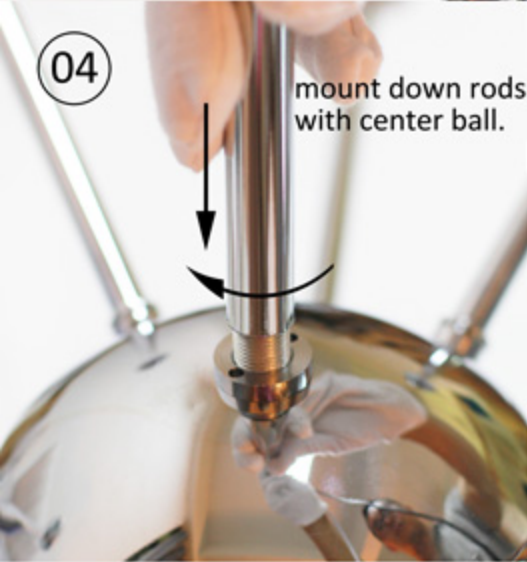
push the wire
into center ball,
twist the arm
clockwise



03

thread power cable
through
down rods

NOTE: connect more down rods if you
want to hang the chandelier lower.



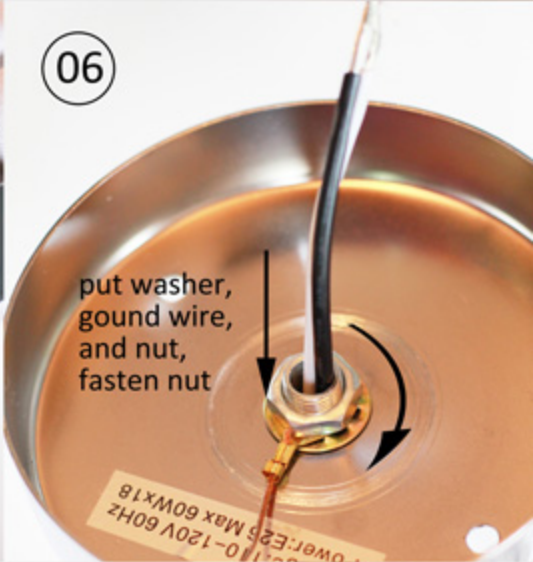
04

mount down rods
with center ball.



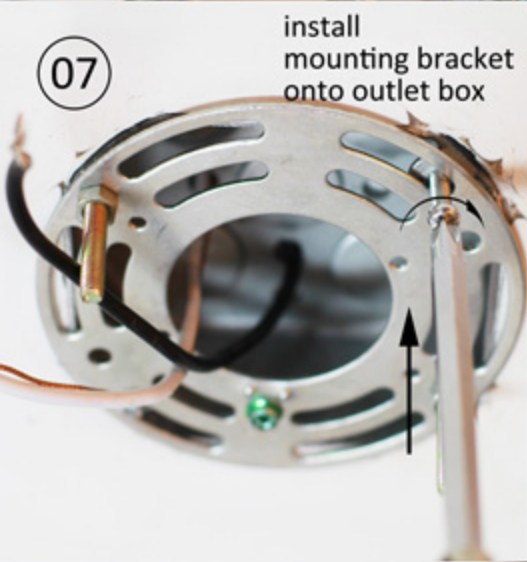
05

thread power cable
through canopy



06

put washer,
ground wire,
and nut,
fasten nut



07

install
mounting bracket
onto outlet box



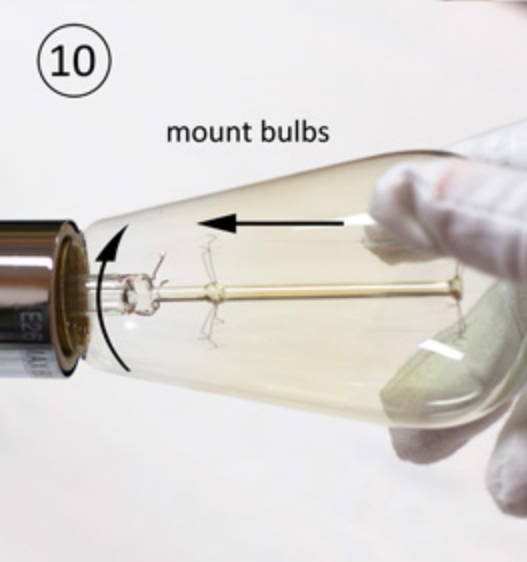
08

connect power cable
with house supply cable



09

move up
canopy and fixture,
fasten nut



10

mount bulbs



sloped ceiling adaptor

mirrea®