

## Roadway

Date: 25.08.2020  
Operator:



Operator  
Telephone  
Fax  
e-Mail

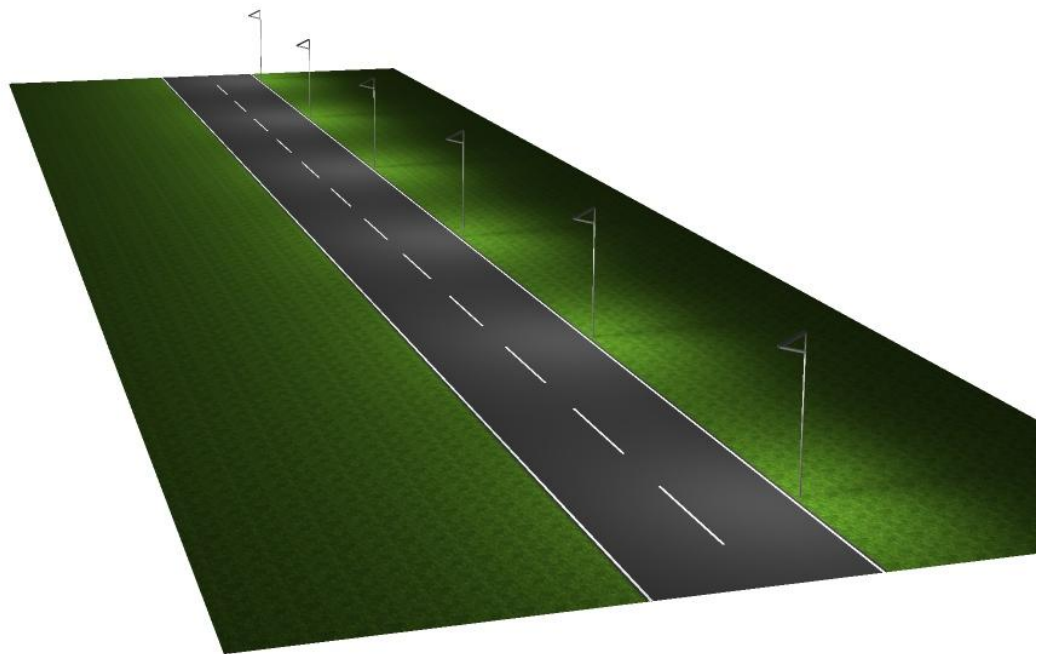
## Table of contents

<b>Roadway</b>	
Project Cover	1
Table of contents	2
<b>Roadway</b>	
3D Rendering	3
False Color Rendering	4
<b>Street 1</b>	
Planning data	5
Luminaire parts list	6
Photometric Results	7
<b>Valuation Fields</b>	
<b>Valuation Field Roadway 1</b>	
Results overview	8
Isolines (E)	9
Greyscale (E)	10
Value Chart (E)	11



Operator  
Telephone  
Fax  
e-Mail

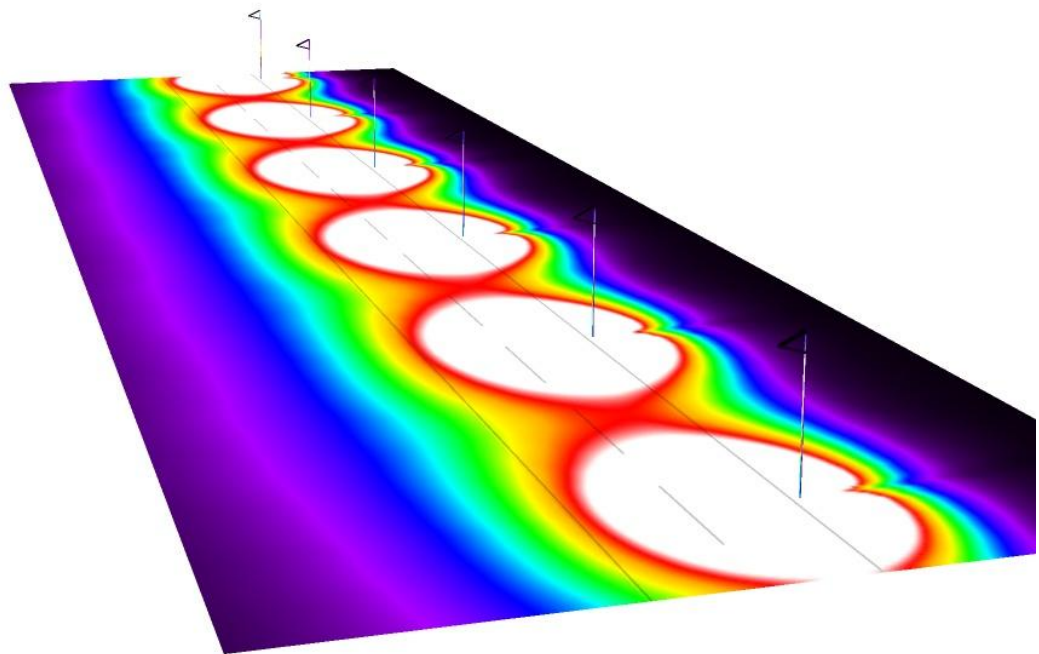
## Roadway / 3D Rendering





Operator  
Telephone  
Fax  
e-Mail

## Roadway / False Color Rendering



0      1.88      3.75      5.63      7.50      9.38      11.25      13.13      15      lx



Operator  
Telephone  
Fax  
e-Mail

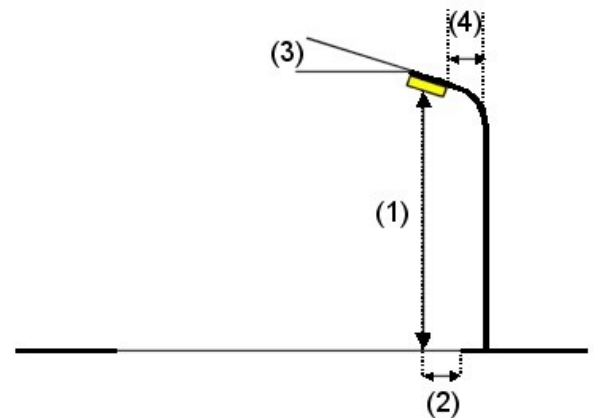
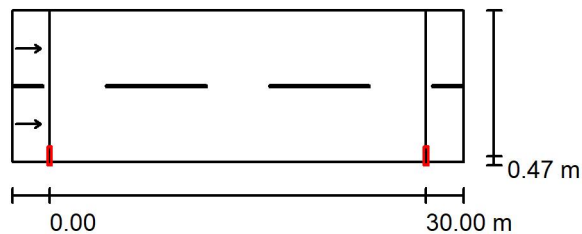
## Street 1 / Planning data

### Street Profile

Roadway 1 (Width: 12.000 m, Number of lanes: 2, tarmac: R3, q0: 0.070)

Light loss factor: 0.80

### Luminaire Arrangements



Luminaire:	100W LED Solar Light
Luminous flux (Luminaire):	16002 lm
Luminous flux (Lamps):	15999 lm
Luminaire Wattage:	100.0 W
Arrangement:	Single row, bottom
Pole Distance:	30.000 m
Mounting Height (1):	8.000 m
Height:	7.903 m
Overhang (2):	0.500 m
Boom Angle (3):	15.0 °
Boom Length (4):	0.500 m

#### Maximum luminous intensities

at 70°: 405 cd/klm

at 80°: 340 cd/klm

at 90°: 38 cd/klm

Any direction forming the specified angle from the downward vertical, with the luminaire installed for use.

Arrangement complies with glare index class D.1.

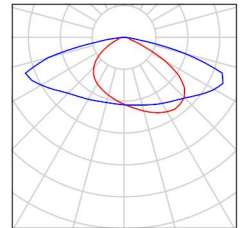


Operator  
Telephone  
Fax  
e-Mail

### Street 1 / Luminaire parts list

100W LED Solar Light  
Article No.:  
Luminous flux (Luminaire): 16002 lm  
Luminous flux (Lamps): 15999 lm  
Luminaire Wattage: 100.0 W  
Luminaire classification according to CIE: 100  
CIE flux code: 35 72 95 100 100  
Fitting: 1 x User defined (Correction Factor 1.000).

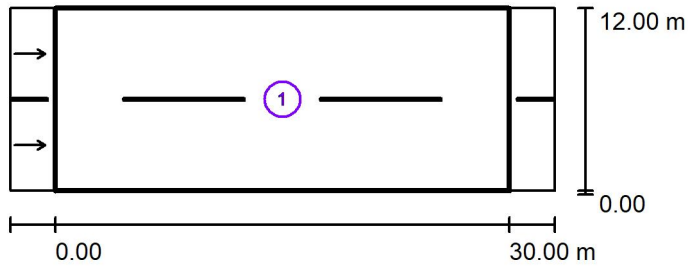
See our luminaire catalog for an image of the luminaire.





Operator  
Telephone  
Fax  
e-Mail

**Street 1 / Photometric Results**



Light loss factor: 0.80

Scale 1:500

**Calculation Field List**

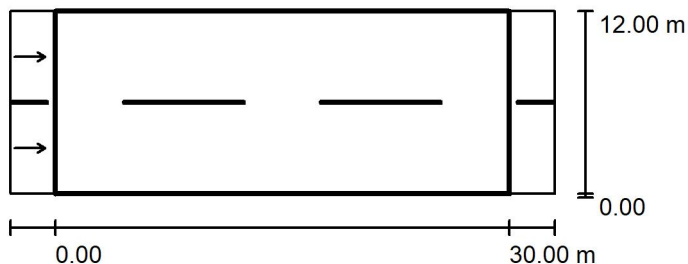
- 1 Valuation Field Roadway 1  
 Length: 30.000 m, Width: 12.000 m  
 Grid: 10 x 6 Points  
 Accompanying Street Elements: Roadway 1.  
 tarmac: R3, q0: 0.070  
 Selected Lighting Class: ME4a

$L_{av}$ [cd/m <sup>2</sup> ]	U0	UI	TI [%]	SR
1.19	0.42	0.86	15	0.64



Operator  
 Telephone  
 Fax  
 e-Mail

**Street 1 / Valuation Field Roadway 1 / Results overview**



Light loss factor: 0.80

Scale 1:500

Grid: 10 x 6 Points

Accompanying Street Elements: Roadway 1.

tarmac: R3, q0: 0.070

Selected Lighting Class: ME4a

$L_{av}$ [cd/m <sup>2</sup> ]	U0	UI	TI [%]	SR
1.19	0.42	0.86	15	0.64

**Assigned observer (2 Pieces):**

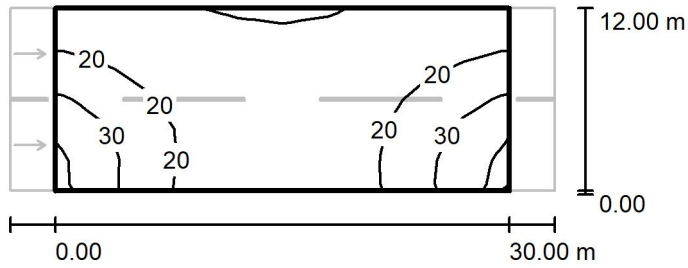
No.	Observer	Position [m]	$L_{av}$ [cd/m <sup>2</sup> ]	U0	UI	TI [%]
1	Observer 1	(-60.000, 3.000, 1.500)	1.19	0.44	0.86	15
2	Observer 2	(-60.000, 9.000, 1.500)	1.31	0.42	0.96	7





Operator  
 Telephone  
 Fax  
 e-Mail

**Street 1 / Valuation Field Roadway 1 / Isolines (E)**



Values in Lux, Scale 1 : 500

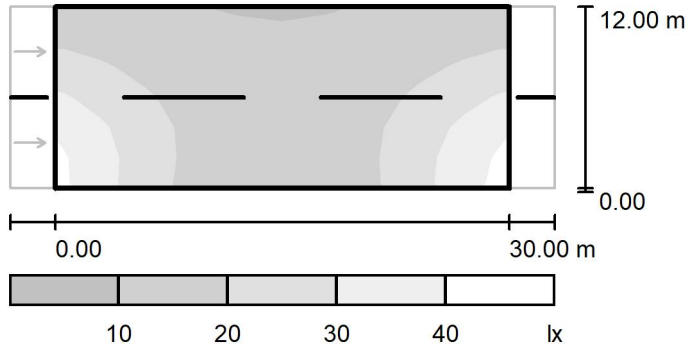
Grid: 10 x 6 Points

$E_{av}$ [lx]	$E_{min}$ [lx]	$E_{max}$ [lx]	u0	$E_{min} / E_{max}$
19	9.99	40	0.523	0.250



Operator  
Telephone  
Fax  
e-Mail

## Street 1 / Valuation Field Roadway 1 / Greyscale (E)



Scale 1 : 500

Grid: 10 x 6 Points

$E_{av}$  [lx]  
19

$E_{min}$  [lx]  
9.99

$E_{max}$  [lx]  
40

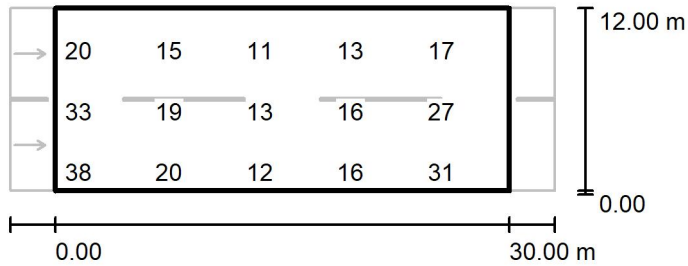
$u_0$   
0.523

$E_{min} / E_{max}$   
0.250



Operator  
 Telephone  
 Fax  
 e-Mail

**Street 1 / Valuation Field Roadway 1 / Value Chart (E)**



Values in Lux, Scale 1 : 500

Not all calculated values could be displayed.

Grid: 10 x 6 Points

$E_{av}$ [lx]	$E_{min}$ [lx]	$E_{max}$ [lx]	u0	$E_{min} / E_{max}$
19	9.99	40	0.523	0.250