

Roadway

Partner for Contact:
Order No.:
Company:
Customer No.:

Date: 15.10.2019
Operator:



Operator
Telephone
Fax
e-Mail

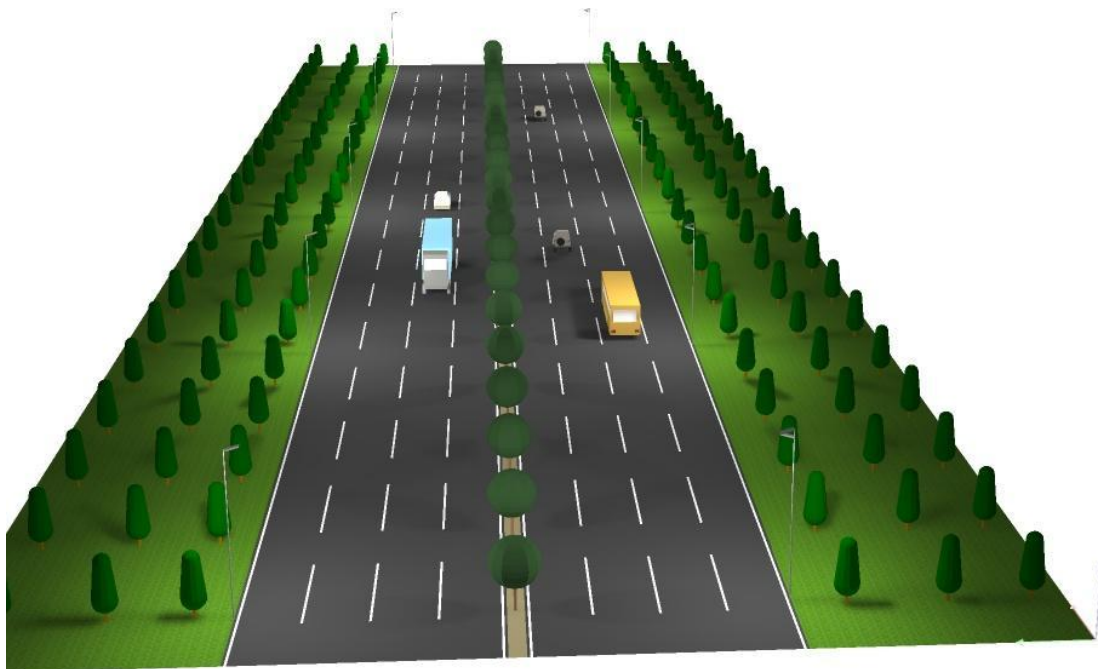
Table of contents

Roadway	
Project Cover	1
Table of contents	2
Roadway	
3D Rendering	3
False Color Rendering	4
Street 1	
Planning data	5
Luminaire parts list	6
Photometric Results	7
Valuation Fields	
Valuation Field Roadway 2	
Isolines (E)	9
Greyscale (E)	10
Value Chart (E)	11
Valuation Field Roadway 1	
Isolines (E)	12
Greyscale (E)	13
Value Chart (E)	14



Operator
Telephone
Fax
e-Mail

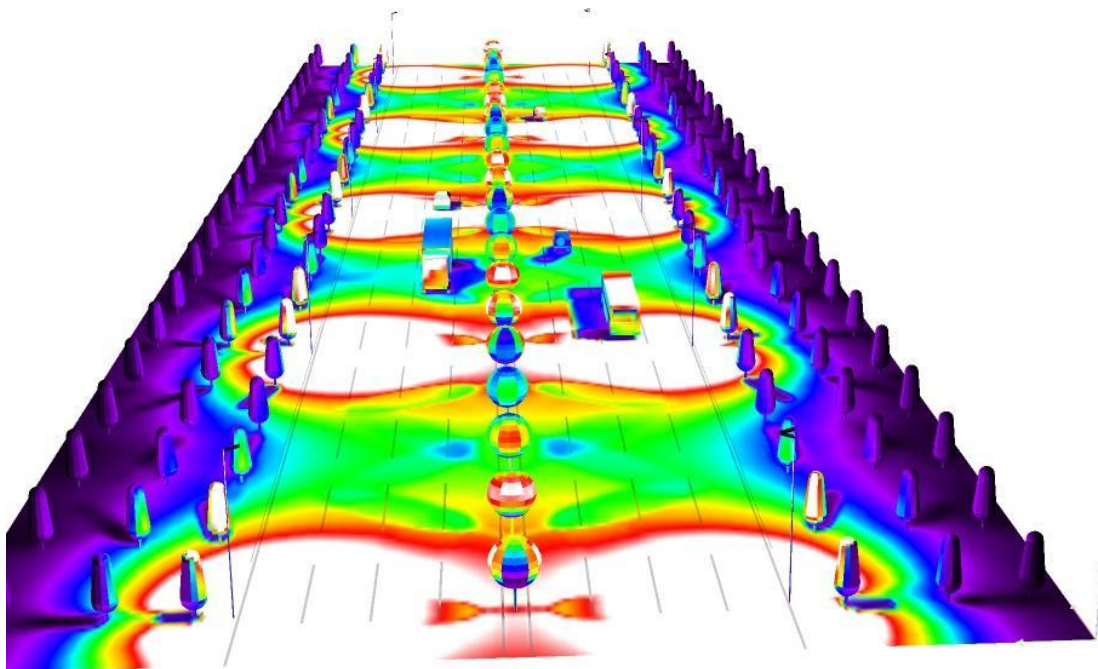
Roadway / 3D Rendering





Operator
Telephone
Fax
e-Mail

Roadway / False Color Rendering



0 1.88 3.75 5.63 7.50 9.38 11.25 13.13 15

lx



Operator
Telephone
Fax
e-Mail

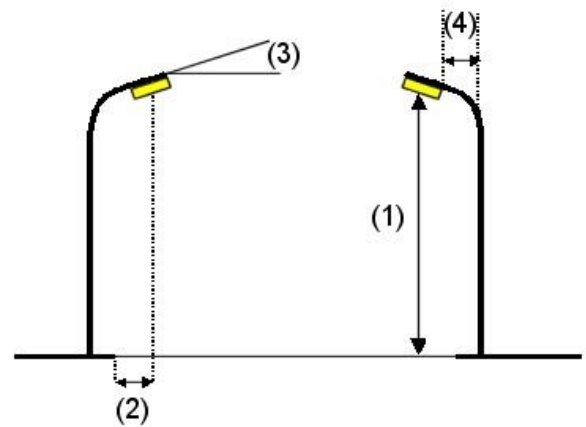
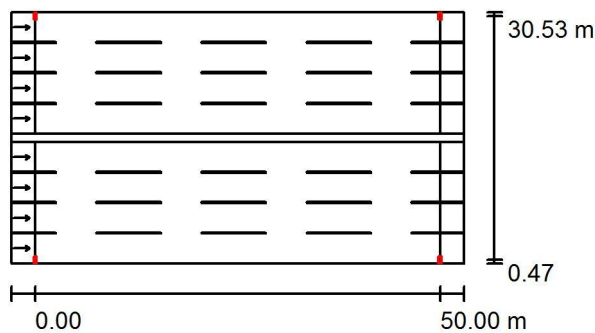
Street 1 / Planning data

Street Profile

Roadway 2 (Width: 15.000 m, Number of lanes: 4, tarmac: R3, q0: 0.070)
 Median 1 (Width: 1.000 m, Height: 0.000 m)
 Roadway 1 (Width: 15.000 m, Number of lanes: 4, tarmac: R3, q0: 0.070)

Light loss factor: 0.80

Luminaire Arrangements



Luminaire: 120W LED Solar Light
 Luminous flux (Luminaire): 19211 lm
 Luminous flux (Lamps): 19206 lm
 Luminaire Wattage: 120.0 W
 Arrangement: Double row, opposing
 Pole Distance: 50.000 m
 Mounting Height (1): 10.000 m
 Height: 9.904 m
 Overhang (2): 0.500 m
 Boom Angle (3): 16.0 °
 Boom Length (4): 0.500 m

Maximum luminous intensities

at 70°: 402 cd/klm
 at 80°: 351 cd/klm
 at 90°: 41 cd/klm

Any direction forming the specified angle from the downward vertical, with the luminaire installed for use.

Arrangement complies with glare index class D.0.

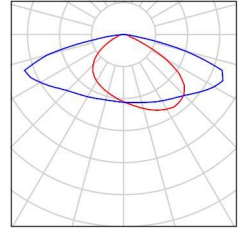


Operator
Telephone
Fax
e-Mail

Street 1 / Luminaire parts list

120W LED Solar Light
Article No.:
Luminous flux (Luminaire): 19211 lm
Luminous flux (Lamps): 19206 lm
Luminaire Wattage: 120.0 W
Luminaire classification according to DIN: A20
CIE flux code: 35 72 95 100 100
Fitting: 1 x User defined (Correction Factor
1.000).

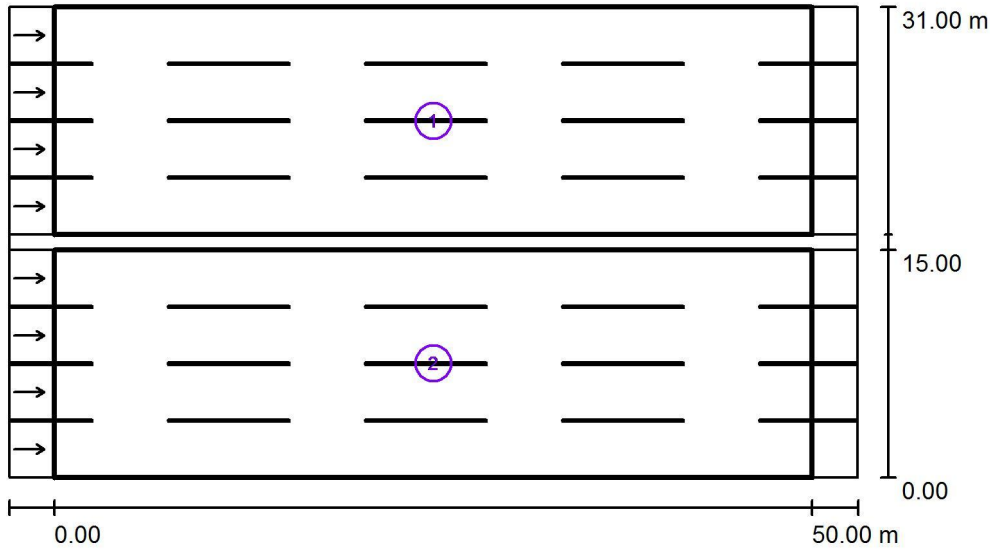
See our luminaire
catalog for an image of
the luminaire.





Operator
Telephone
Fax
e-Mail

Street 1 / Photometric Results



Light loss factor: 0.80

Scale 1:500

Calculation Field List

- 1 Valuation Field Roadway 2
Length: 50.000 m, Width: 15.000 m
Grid: 17 x 12 Points
Accompanying Street Elements: Roadway 2.
tarmac: R3, q0: 0.070
Selected Lighting Class: ME4a

L_{av} [cd/m ²]	U0	UI	TI [%]	SR
0.84	0.56	0.65	15	0.85



Operator
Telephone
Fax
e-Mail

Street 1 / Photometric Results

Calculation Field List

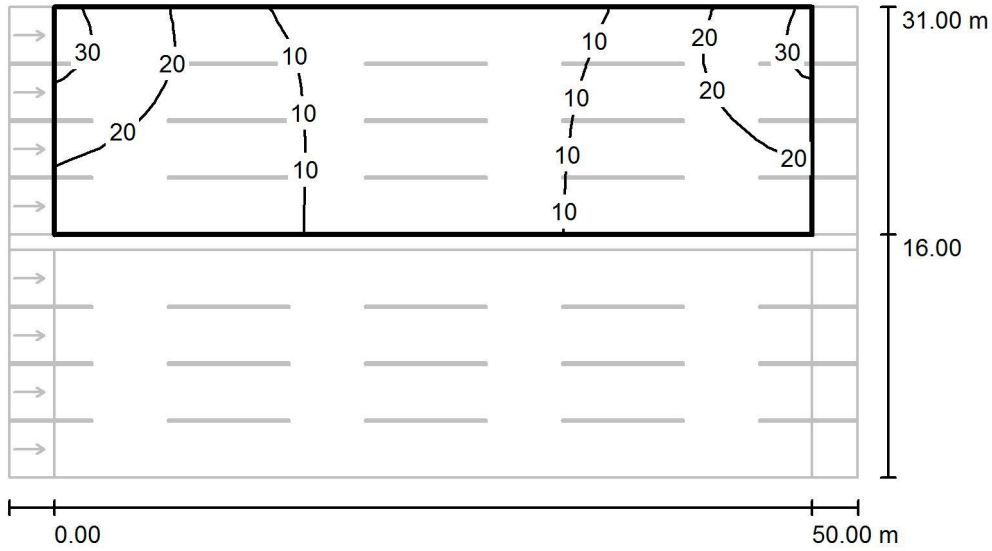
- 2 Valuation Field Roadway 1
Length: 50.000 m, Width: 15.000 m
Grid: 17 x 12 Points
Accompanying Street Elements: Roadway 1.
tarmac: R3, q0: 0.070
Selected Lighting Class: ME4a

L_{av} [cd/m ²]	U0	UI	TI [%]	SR
0.84	0.54	0.52	15	0.85



Operator
 Telephone
 Fax
 e-Mail

Street 1 / Valuation Field Roadway 2 / Isolines (E)



Values in Lux, Scale 1 : 500

Grid: 17 x 12 Points

E_{av} [lx]
 14

E_{min} [lx]
 5.97

E_{max} [lx]
 32

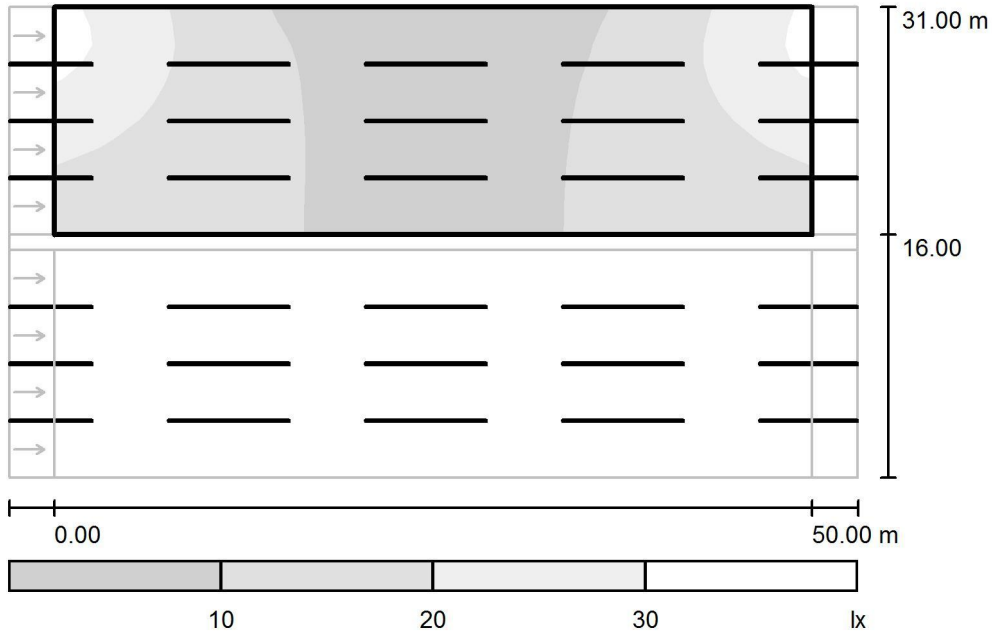
u_0
 0.433

E_{min} / E_{max}
 0.189



Operator
Telephone
Fax
e-Mail

Street 1 / Valuation Field Roadway 2 / Greyscale (E)



Scale 1 : 500

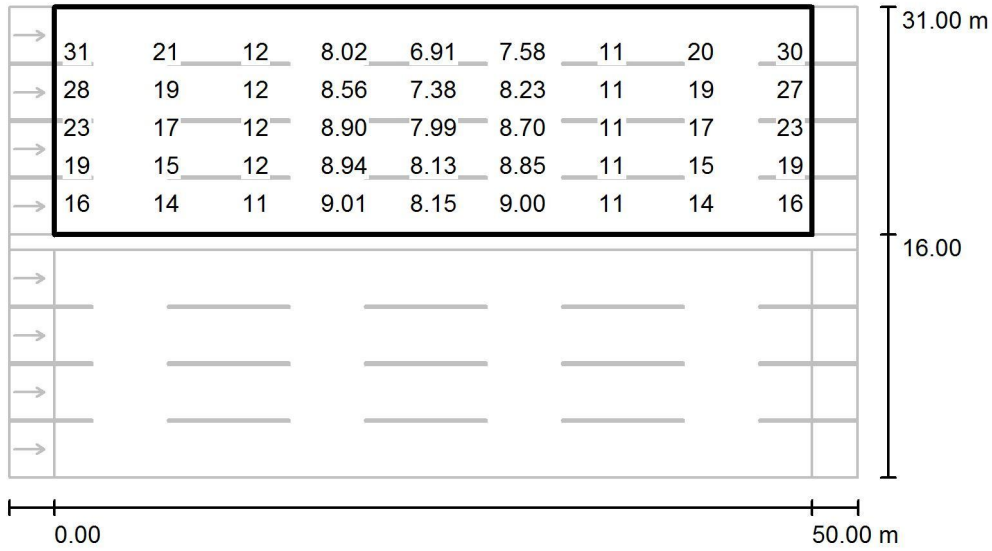
Grid: 17 x 12 Points

E_{av} [lx]	E_{min} [lx]	E_{max} [lx]	u0	E_{min} / E_{max}
14	5.97	32	0.433	0.189



Operator
Telephone
Fax
e-Mail

Street 1 / Valuation Field Roadway 2 / Value Chart (E)



Not all calculated values could be displayed.

Values in Lux, Scale 1 : 500

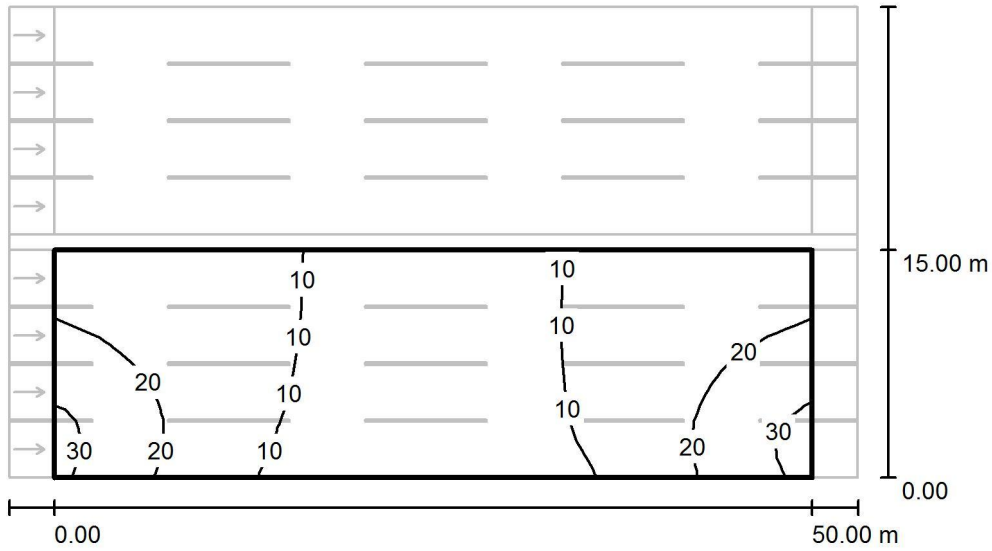
Grid: 17 x 12 Points

E_{av} [lx]	E_{min} [lx]	E_{max} [lx]	u0	E_{min} / E_{max}
14	5.97	32	0.433	0.189



Operator
Telephone
Fax
e-Mail

Street 1 / Valuation Field Roadway 1 / Isolines (E)



Values in Lux, Scale 1 : 500

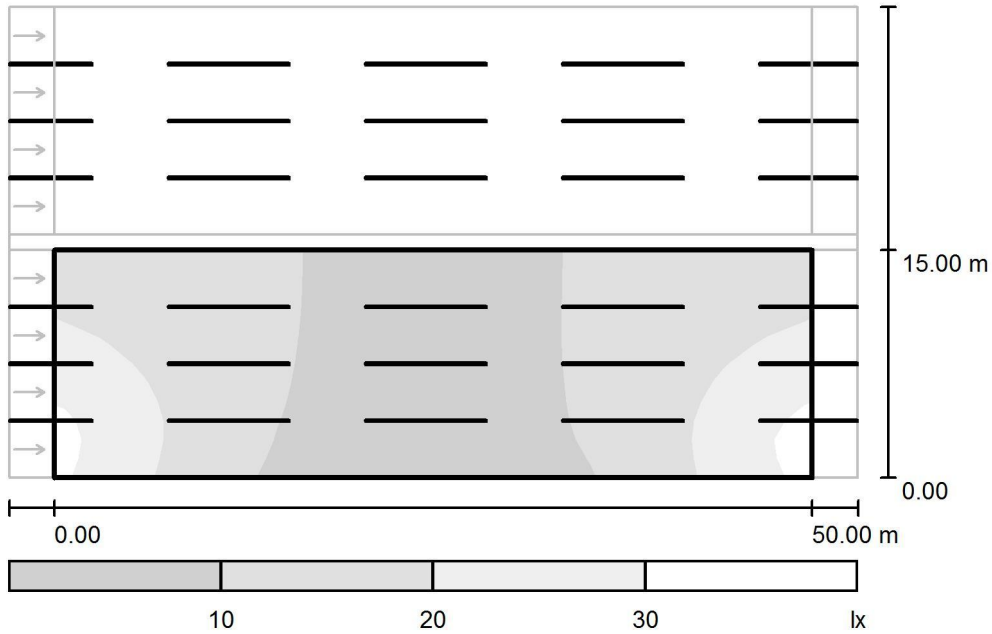
Grid: 17 x 12 Points

E_{av} [lx]	E_{min} [lx]	E_{max} [lx]	u0	E_{min} / E_{max}
14	5.97	32	0.433	0.189



Operator
Telephone
Fax
e-Mail

Street 1 / Valuation Field Roadway 1 / Greyscale (E)



Scale 1 : 500

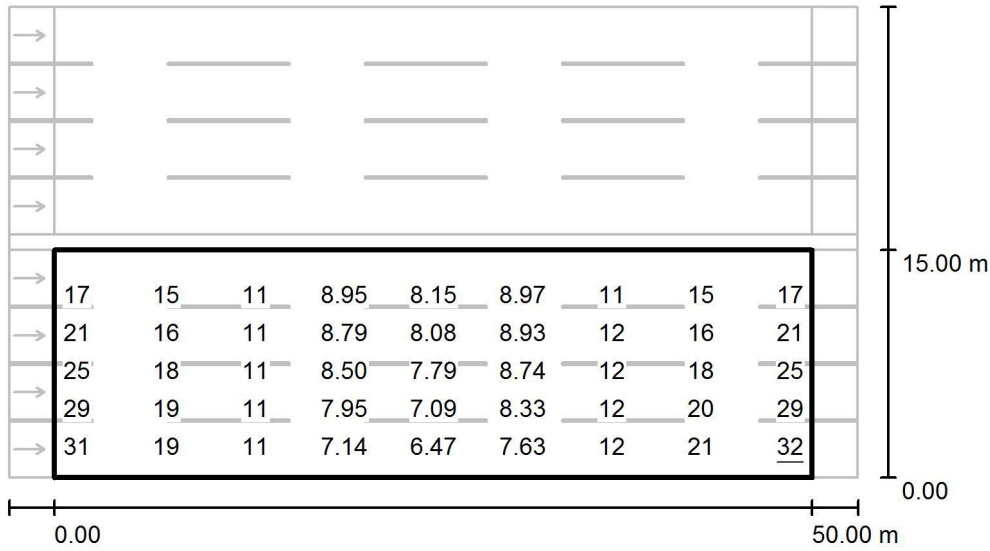
Grid: 17 x 12 Points

E_{av} [lx]	E_{min} [lx]	E_{max} [lx]	u0	E_{min} / E_{max}
14	5.97	32	0.433	0.189



Operator
Telephone
Fax
e-Mail

Street 1 / Valuation Field Roadway 1 / Value Chart (E)



Values in Lux, Scale 1 : 500

Not all calculated values could be displayed.

Grid: 17 x 12 Points

E_{av} [lx]
14

E_{min} [lx]
5.97

E_{max} [lx]
32

u_0
0.433

E_{min} / E_{max}
0.189