

Roadway

Partner for Contact:
Order No.:
Company:
Customer No.:

Date: 21.12.2019
Operator:



Operator
Telephone
Fax
e-Mail

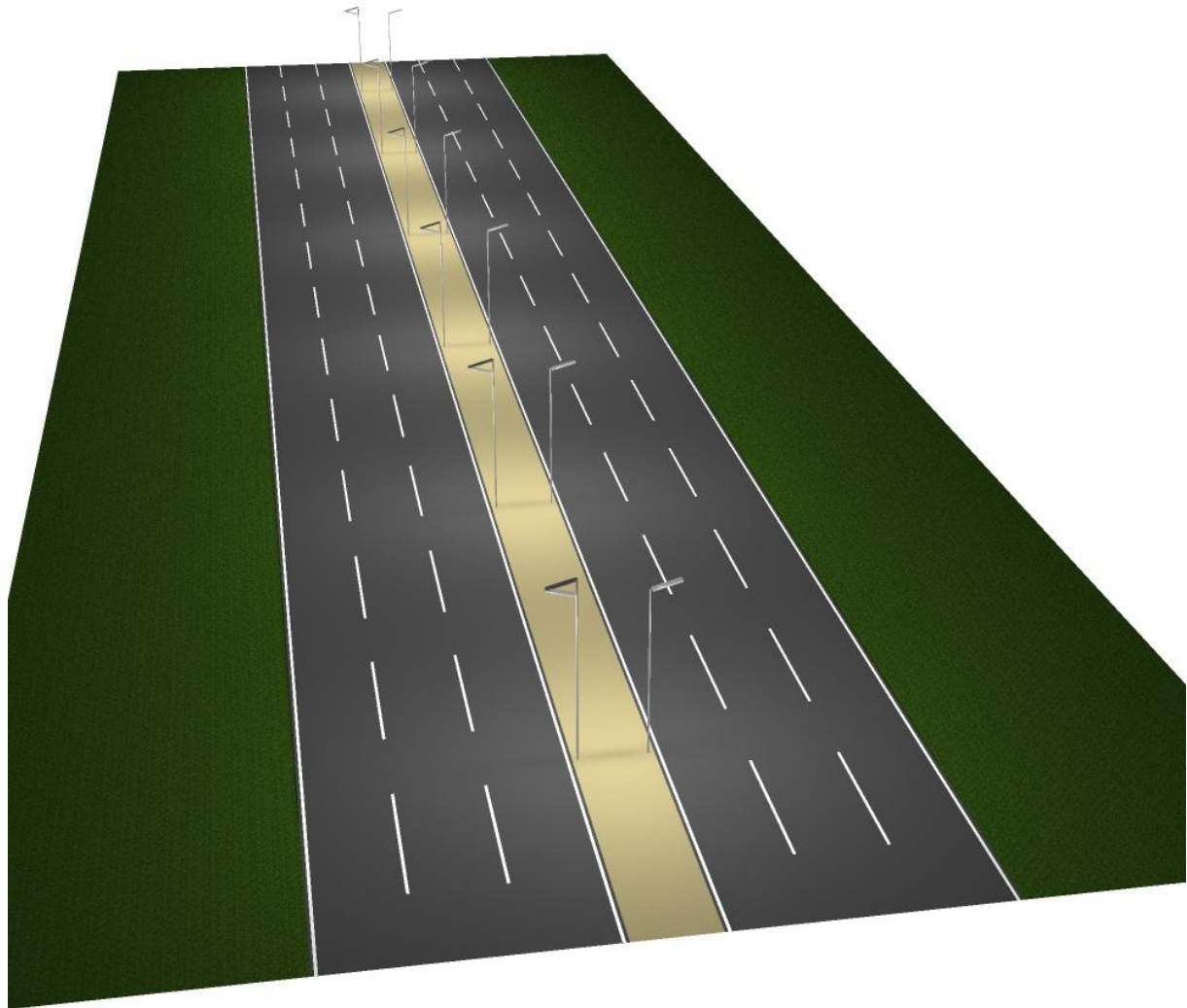
Table of contents

Roadway	
Project Cover	1
Table of contents	2
Roadway	
3D Rendering	3
False Color Rendering	4
Street 1	
Planning data	5
Luminaire parts list	6
Photometric Results	7
Valuation Fields	
Valuation Field Roadway 1	
Results overview	9
Isolines (E)	10
Greyscale (E)	11
Value Chart (E)	12
Valuation Field Roadway 2	
Results overview	13
Isolines (E)	14
Greyscale (E)	15
Value Chart (E)	16



Operator
Telephone
Fax
e-Mail

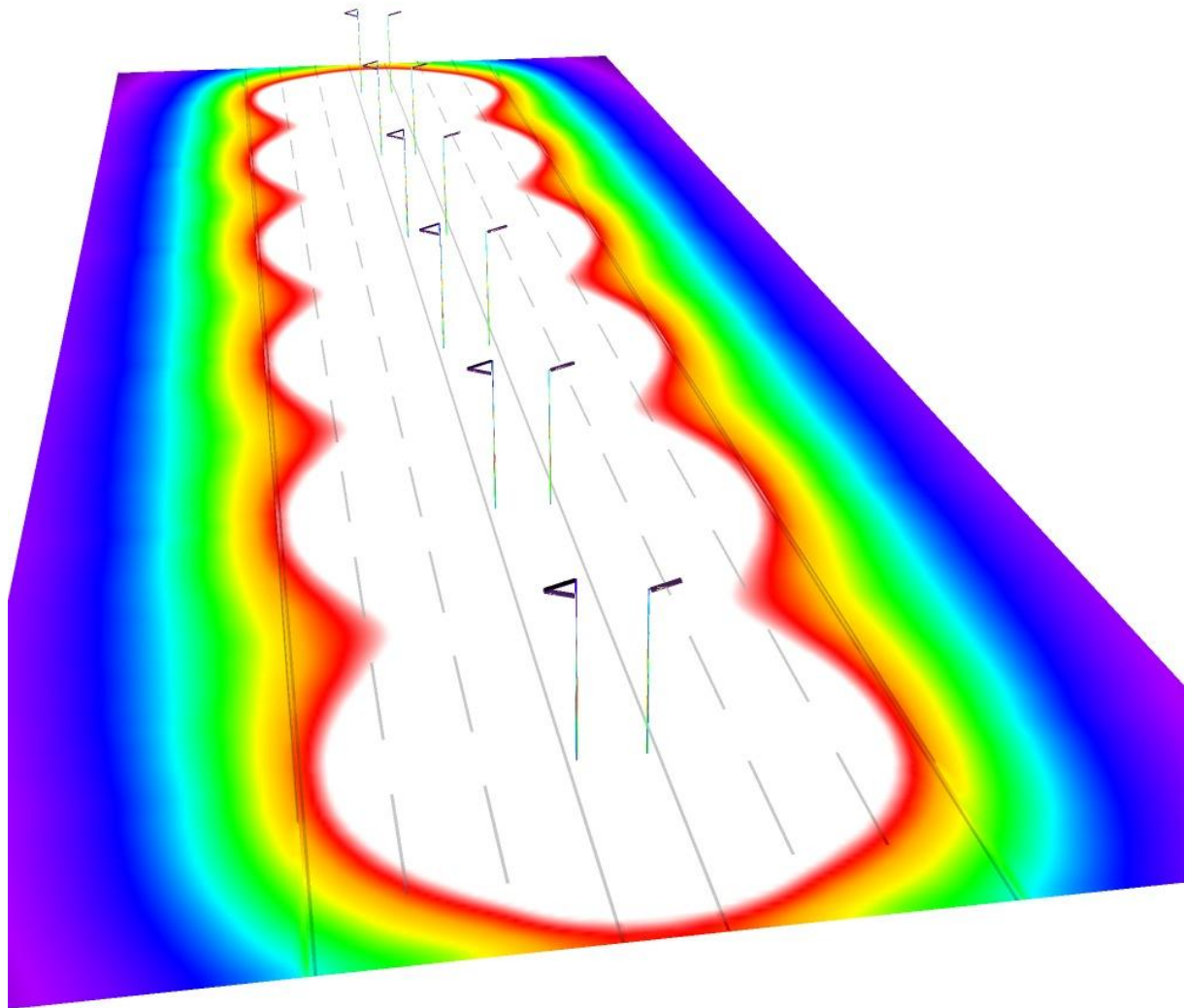
Roadway / 3D Rendering





Operator
Telephone
Fax
e-Mail

Roadway / False Color Rendering



0 1.88 3.75 5.63 7.50 9.38 11.25 13.13 15

lx



Operator
Telephone
Fax
e-Mail

Street 1 / Planning data

Street Profile

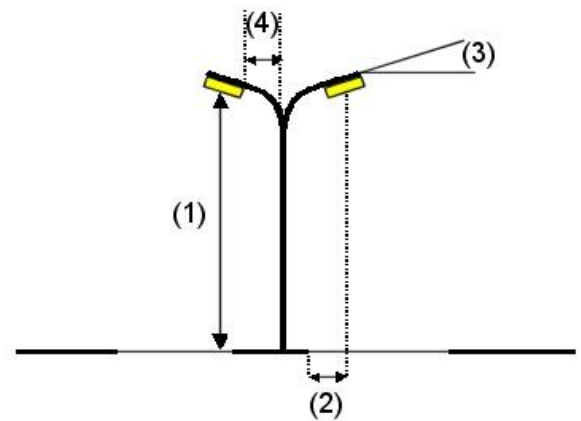
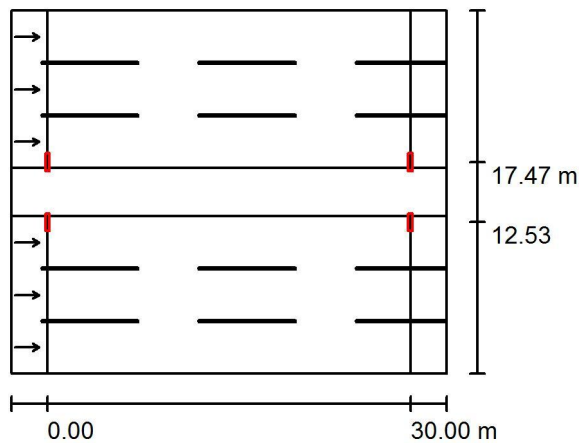
Roadway 2 (Width: 13.000 m, Number of lanes: 3, tarmac: R3, q0: 0.070)

Median 1 (Width: 4.000 m, Height: 0.000 m)

Roadway 1 (Width: 13.000 m, Number of lanes: 3, tarmac: R3, q0: 0.070)

Light loss factor: 0.80

Luminaire Arrangements



Luminaire: 120W LED Solar Light

Luminous flux (Luminaire): 19211 lm

Luminous flux (Lamps): 19206 lm

Luminaire Wattage: 120.0 W

Arrangement: on Median

Pole Distance: 30.000 m

Mounting Height (1): 9.000 m

Height: 8.903 m

Overhang (2): 0.500 m

Boom Angle (3): 15.0 °

Boom Length (4): 2.474 m

Maximum luminous intensities

at 70°: 405 cd/klm

at 80°: 340 cd/klm

at 90°: 38 cd/klm

Any direction forming the specified angle from the downward vertical, with the luminaire installed for use.

Arrangement complies with glare index class D.0.

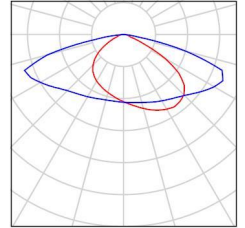


Operator
Telephone
Fax
e-Mail

Street 1 / Luminaire parts list

120W LED Solar Light
Article No.:
Luminous flux (Luminaire): 19211 lm
Luminous flux (Lamps): 19206 lm
Luminaire Wattage: 120.0 W
Luminaire classification according to DIN: A20
CIE flux code: 35 72 95 100 100
Fitting: 1 x User defined (Correction Factor 1.000).

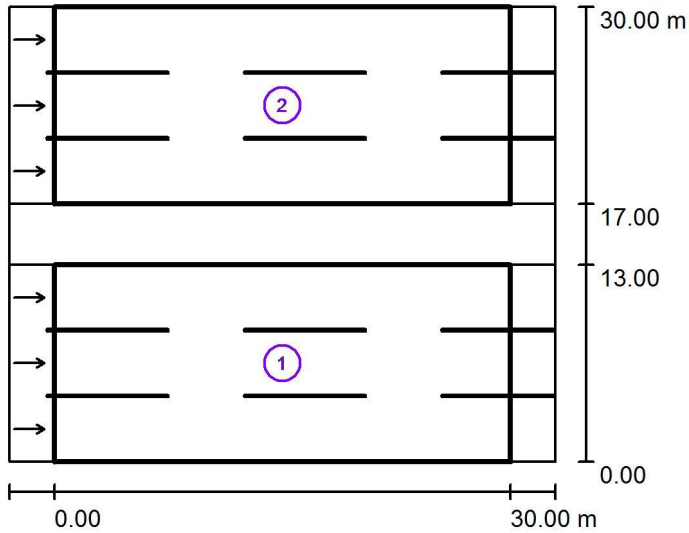
See our luminaire catalog for an image of the luminaire.





Operator
Telephone
Fax
e-Mail

Street 1 / Photometric Results



Light loss factor: 0.80

Scale 1:500

Calculation Field List

- 1 Valuation Field Roadway 1
Length: 30.000 m, Width: 13.000 m
Grid: 10 x 9 Points
Accompanying Street Elements: Roadway 1.
tarmac: R3, q0: 0.070
Selected Lighting Class: ME4a

L_{av} [cd/m ²]	U0	UI	TI [%]	SR
1.45	0.38	0.89	15	0.99



Operator
Telephone
Fax
e-Mail

Street 1 / Photometric Results

Calculation Field List

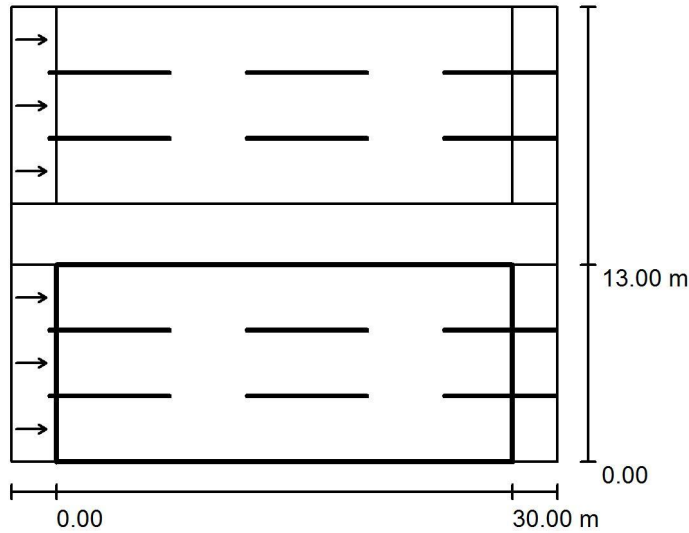
- 2 Valuation Field Roadway 2
Length: 30.000 m, Width: 13.000 m
Grid: 10 x 9 Points
Accompanying Street Elements: Roadway 2.
tarmac: R3, q0: 0.070
Selected Lighting Class: ME4a

L_{av} [cd/m ²]	U0	UI	TI [%]	SR
1.42	0.38	0.90	14	0.99



Operator
Telephone
Fax
e-Mail

Street 1 / Valuation Field Roadway 1 / Results overview



Light loss factor: 0.80

Scale 1:500

Grid: 10 x 9 Points

Accompanying Street Elements: Roadway 1.

tarmac: R3, q0: 0.070

Selected Lighting Class: ME4a

L_{av} [cd/m ²]	U0	UI	TI [%]	SR
1.45	0.38	0.89	15	0.99

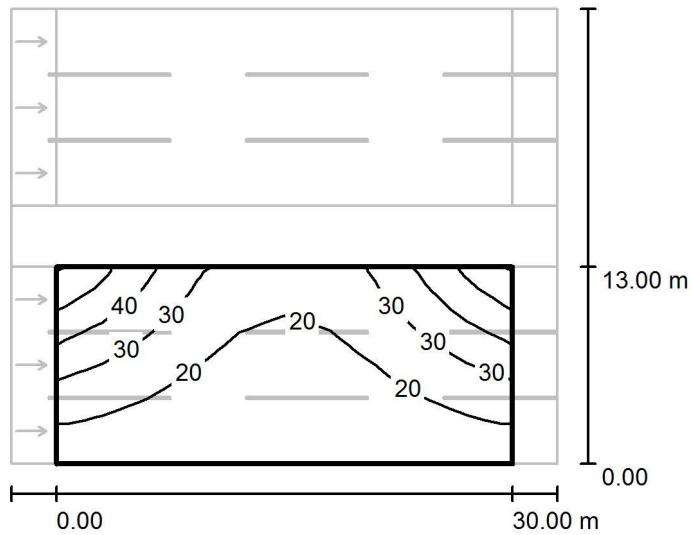
Assigned observer (3 Pieces):

No.	Observer	Position [m]	L_{av} [cd/m ²]	U0	UI	TI [%]
1	Observer 1	(-60.000, 2.167, 1.500)	1.70	0.38	0.90	6
2	Observer 2	(-60.000, 6.500, 1.500)	1.58	0.39	0.89	10
3	Observer 3	(-60.000, 10.833, 1.500)	1.45	0.41	0.97	15



Operator
 Telephone
 Fax
 e-Mail

Street 1 / Valuation Field Roadway 1 / Isolines (E)



Values in Lux, Scale 1 : 500

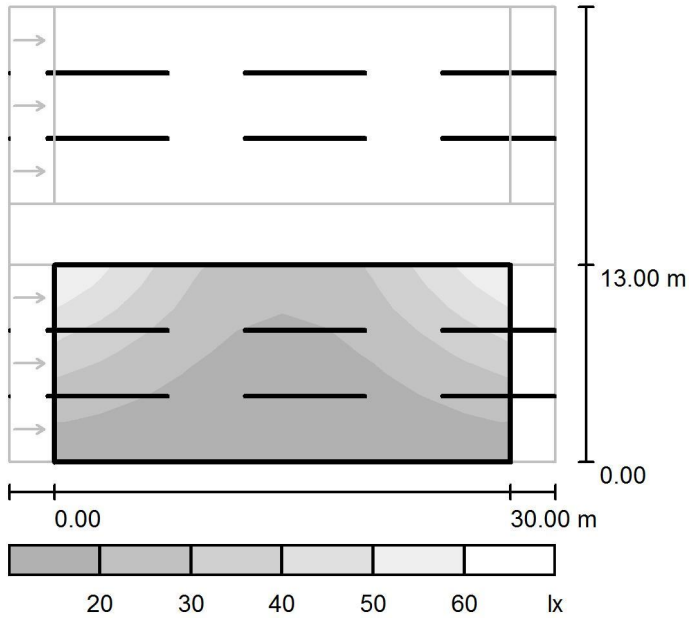
Grid: 10 x 9 Points

E_{av} [lx]	E_{min} [lx]	E_{max} [lx]	u0	E_{min} / E_{max}
24	12	55	0.486	0.212



Operator
 Telephone
 Fax
 e-Mail

Street 1 / Valuation Field Roadway 1 / Greyscale (E)



Scale 1 : 500

Grid: 10 x 9 Points

E_{av} [lx]
 24

E_{min} [lx]
 12

E_{max} [lx]
 55

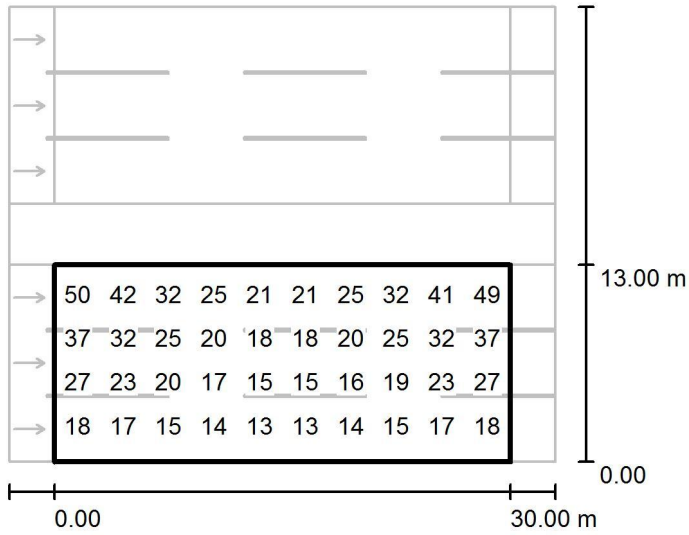
$u0$
 0.486

E_{min} / E_{max}
 0.212



Operator
Telephone
Fax
e-Mail

Street 1 / Valuation Field Roadway 1 / Value Chart (E)



Values in Lux, Scale 1 : 500

Not all calculated values could be displayed.

Grid: 10 x 9 Points

E_{av} [lx]
24

E_{min} [lx]
12

E_{max} [lx]
55

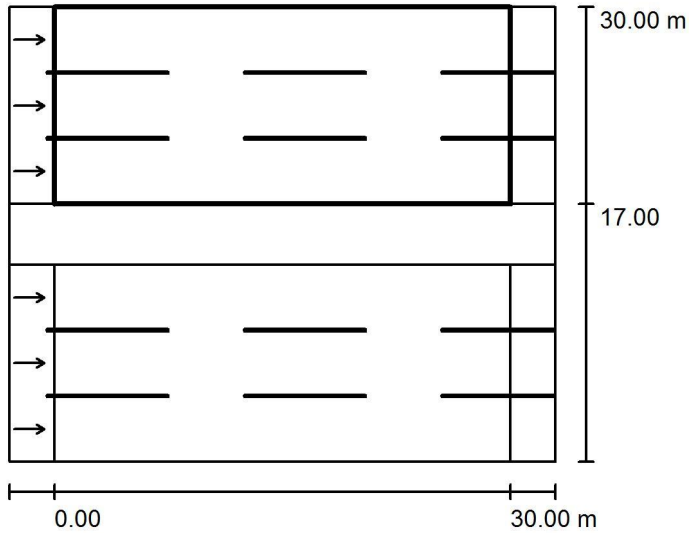
u0
0.486

E_{min} / E_{max}
0.212



Operator
Telephone
Fax
e-Mail

Street 1 / Valuation Field Roadway 2 / Results overview



Light loss factor: 0.80

Scale 1:500

Grid: 10 x 9 Points

Accompanying Street Elements: Roadway 2.

tarmac: R3, q0: 0.070

Selected Lighting Class: ME4a

L_{av} [cd/m ²]	U0	UI	TI [%]	SR
1.42	0.38	0.90	14	0.99

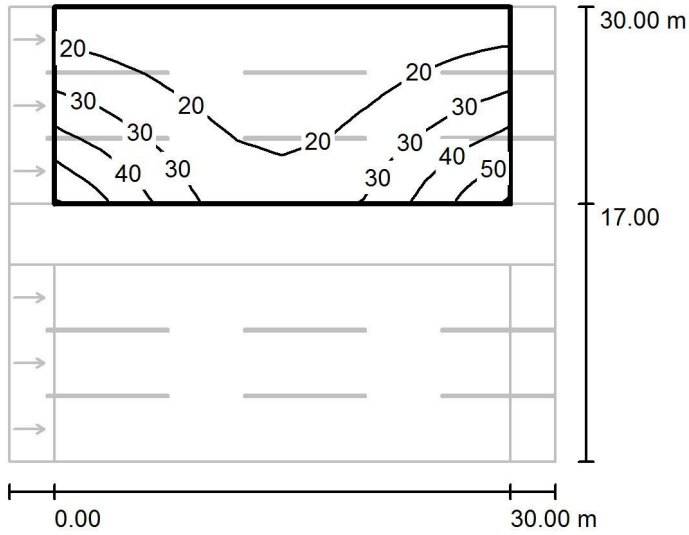
Assigned observer (3 Pieces):

No.	Observer	Position [m]	L_{av} [cd/m ²]	U0	UI	TI [%]
1	Observer 4	(-60.000, 19.167, 1.500)	1.42	0.41	0.93	14
2	Observer 5	(-60.000, 23.500, 1.500)	1.55	0.39	0.90	9
3	Observer 6	(-60.000, 27.833, 1.500)	1.67	0.38	0.91	5



Operator
 Telephone
 Fax
 e-Mail

Street 1 / Valuation Field Roadway 2 / Isolines (E)



Values in Lux, Scale 1 : 500

Grid: 10 x 9 Points

E_{av} [lx]
 24

E_{min} [lx]
 12

E_{max} [lx]
 55

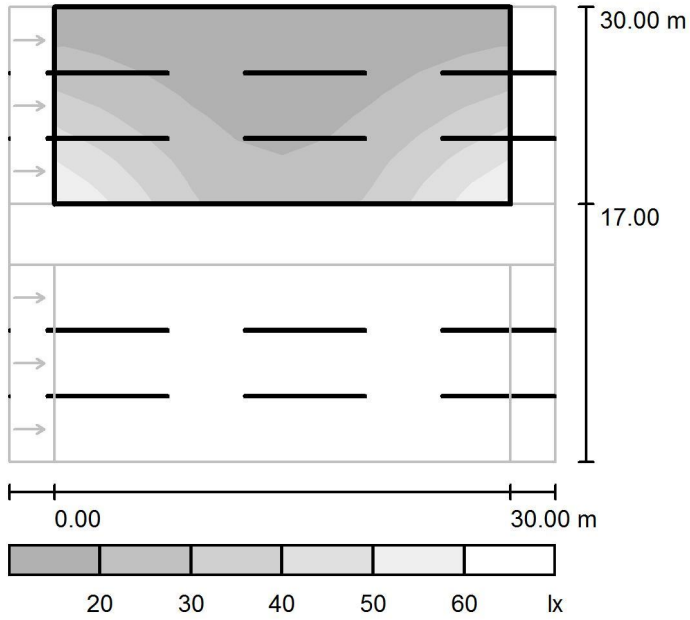
u0
 0.486

E_{min} / E_{max}
 0.212



Operator
Telephone
Fax
e-Mail

Street 1 / Valuation Field Roadway 2 / Greyscale (E)



Scale 1 : 500

Grid: 10 x 9 Points

E_{av} [lx]
24

E_{min} [lx]
12

E_{max} [lx]
55

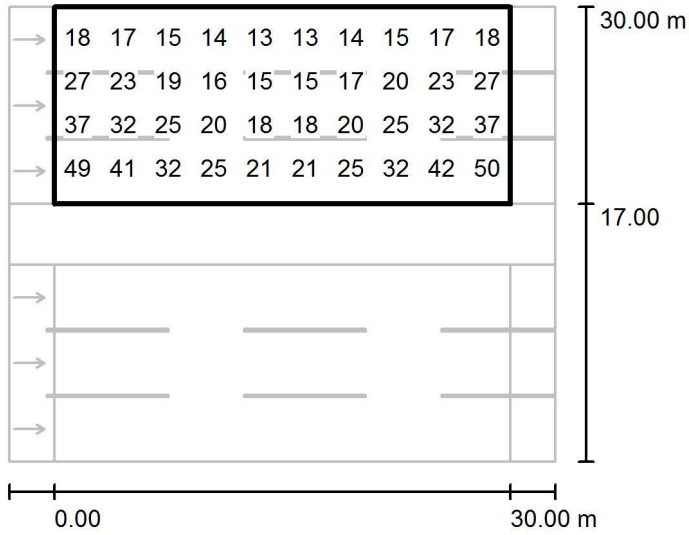
u_0
0.486

E_{min} / E_{max}
0.212



Operator
Telephone
Fax
e-Mail

Street 1 / Valuation Field Roadway 2 / Value Chart (E)



Values in Lux, Scale 1 : 500

Not all calculated values could be displayed.

Grid: 10 x 9 Points

E_{av} [lx]
24

E_{min} [lx]
12

E_{max} [lx]
55

u0
0.486

E_{min} / E_{max}
0.212