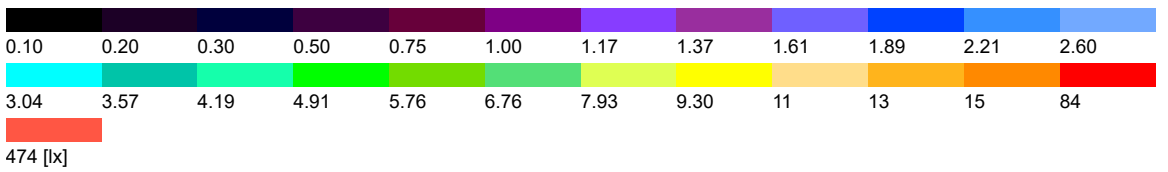
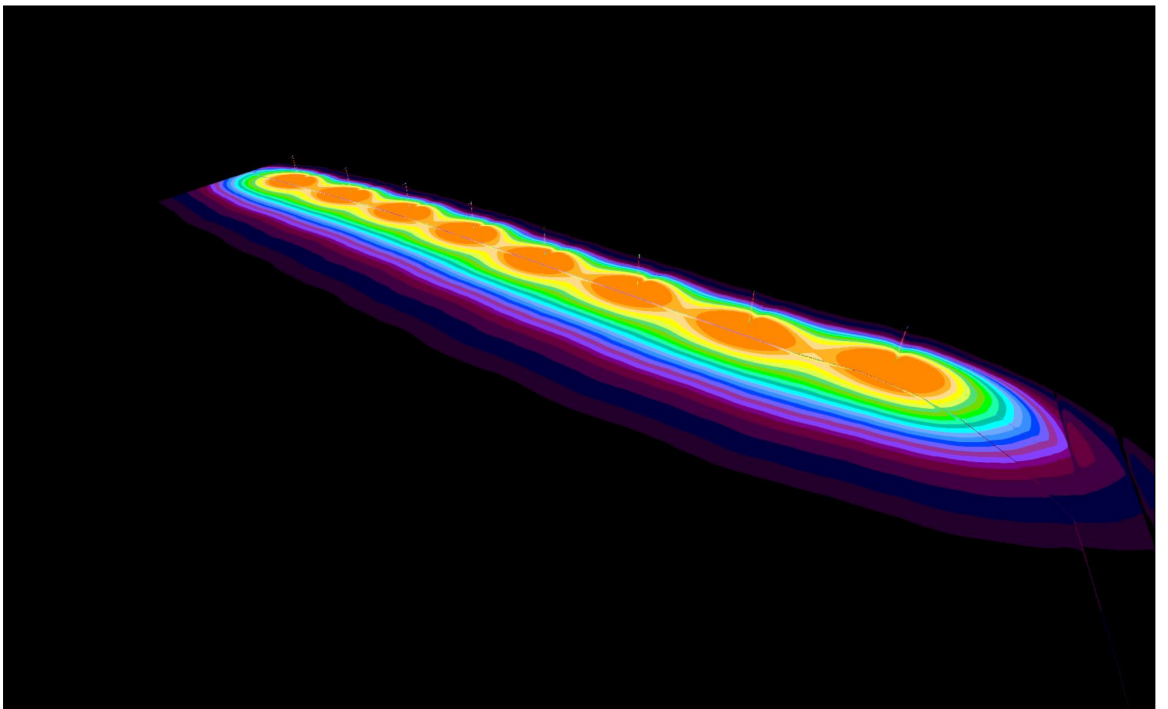
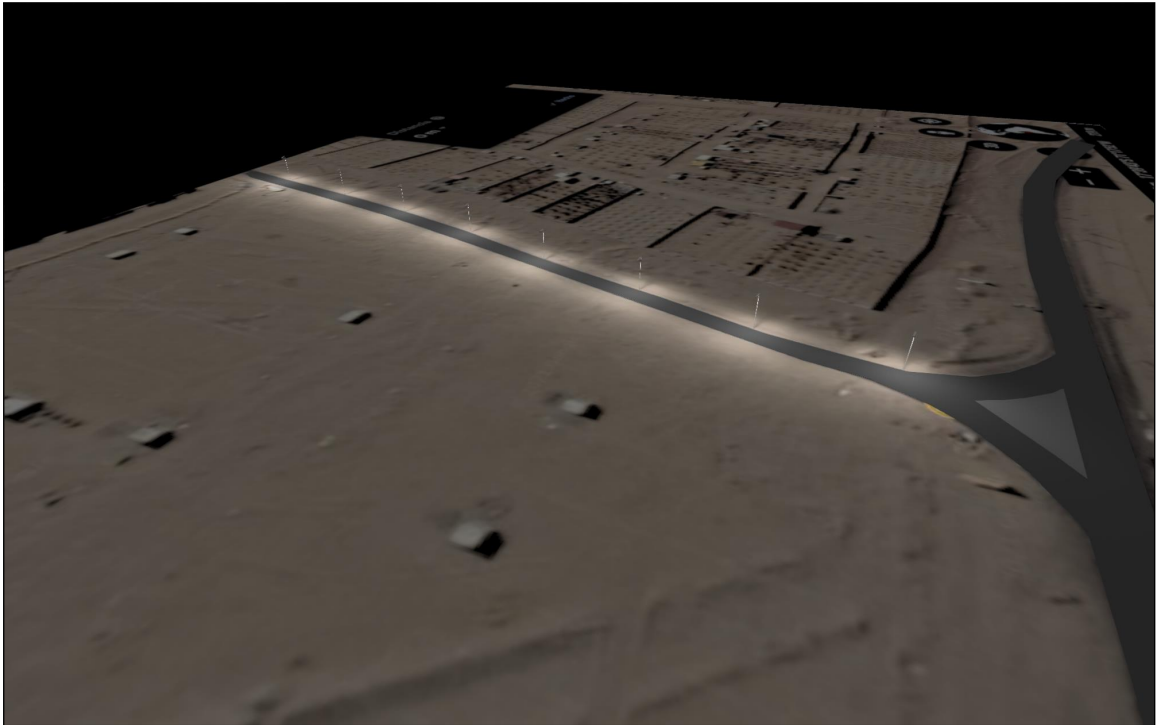


Roadway

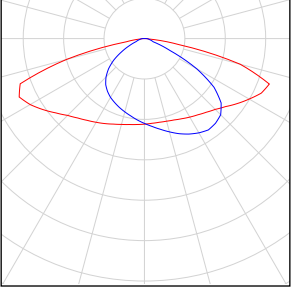


Content

Roadway

Luminaire list.....	3
Views.....	4
Site 1	
Luminaire layout plan.....	9
Calculation surfaces.....	10
Roadway / Perpendicular illuminance.....	11

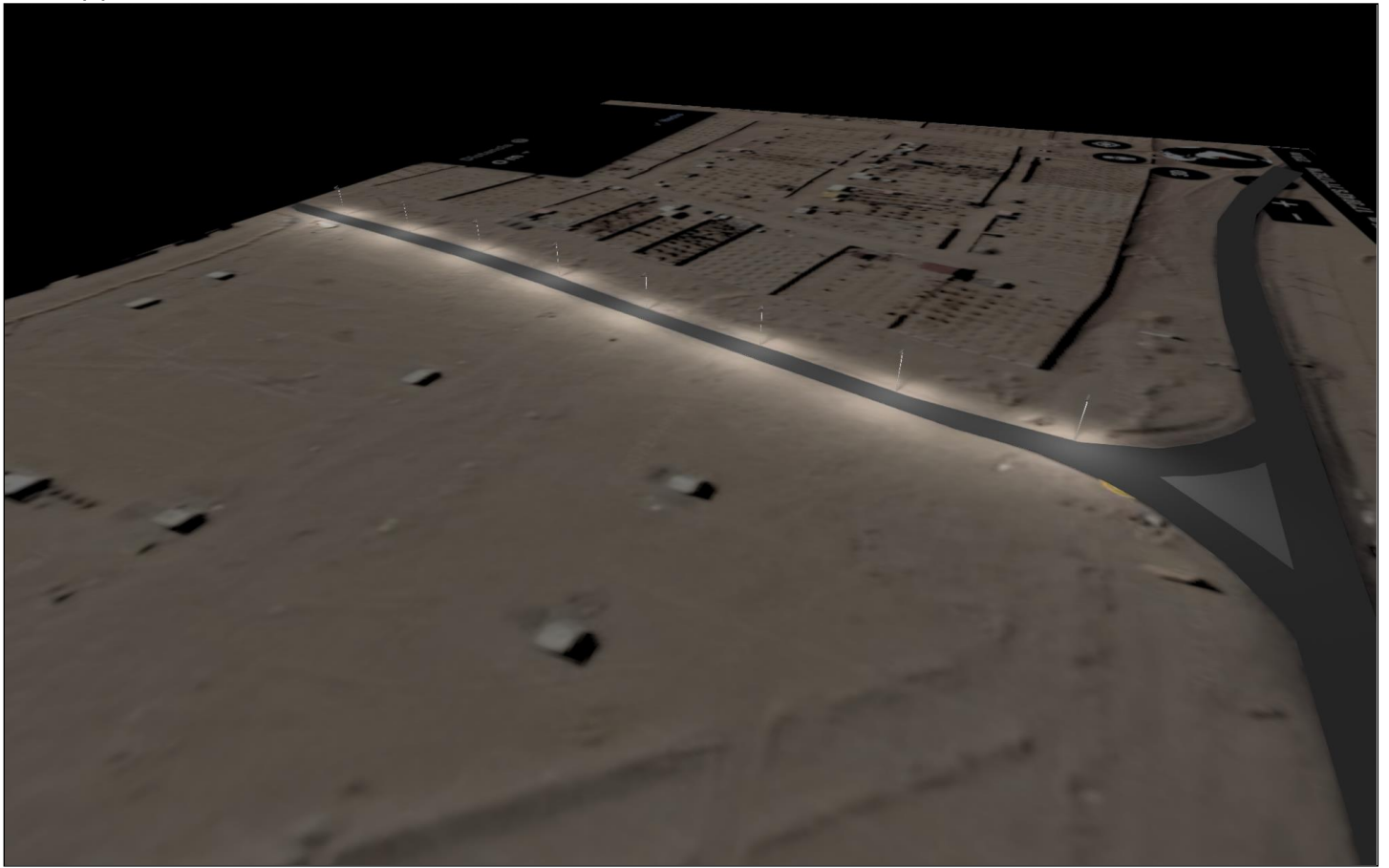
Roadway

Quantity	Luminaire (Luminous emittance)		
8	DIALux - 100W LED Solar Light Luminous emittance 1 Fitting: 1x Light output ratio: 100.03% Lamp luminous flux: 16002 lm Luminaire luminous flux: 16006 lm Power: 100.0 W Luminous efficacy: 160.1 lm/W	See our luminaire catalog for an image of the luminaire.	

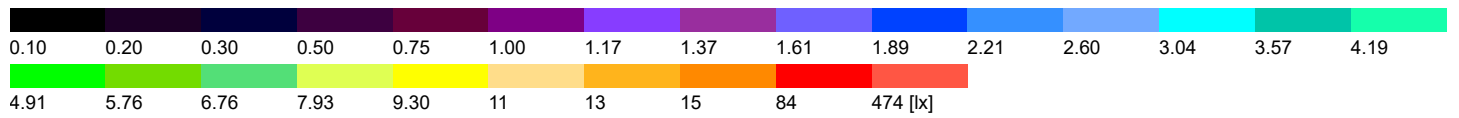
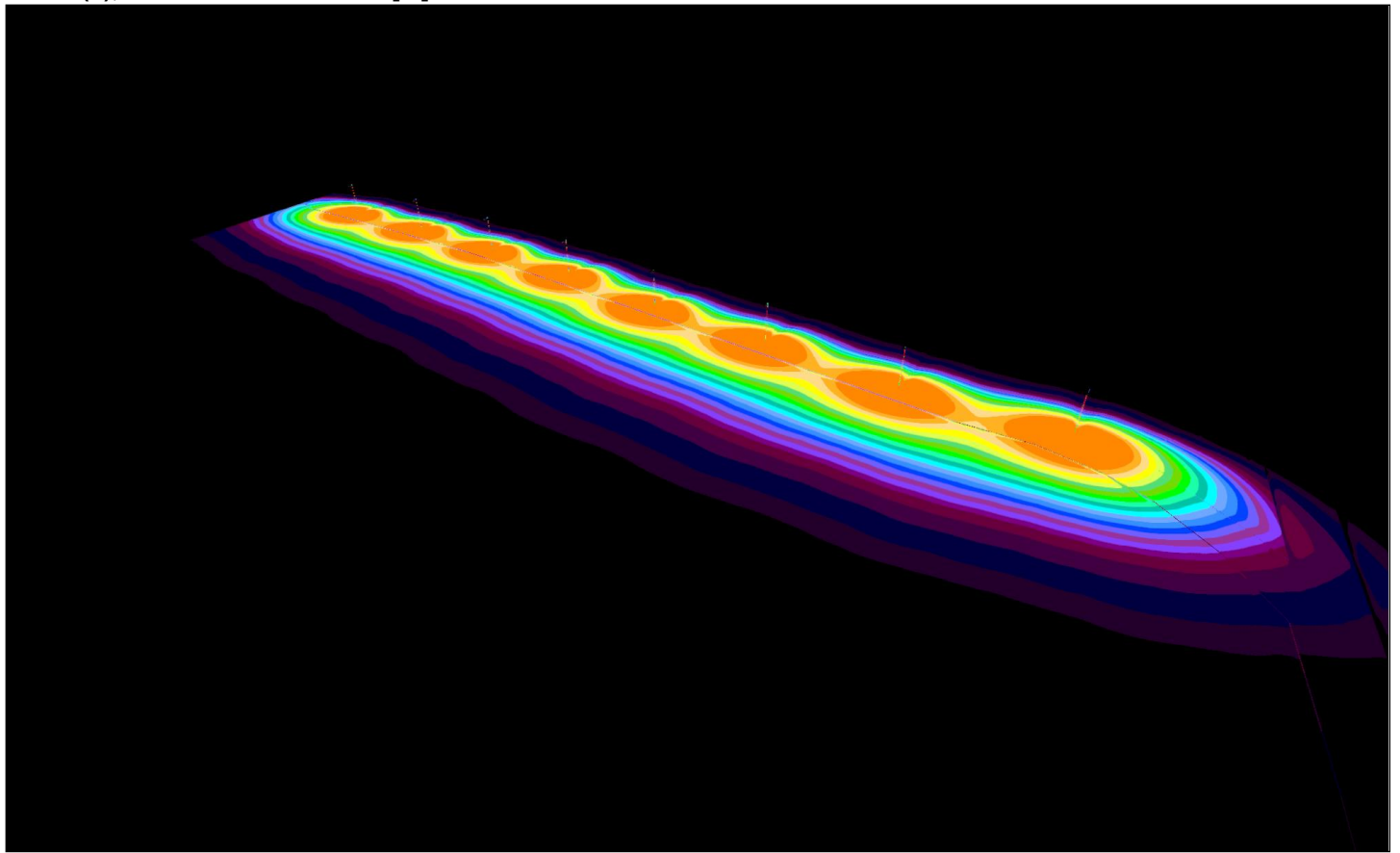
Total lamp luminous flux: 128016 lm, Total luminaire luminous flux: 128048 lm, Total Load: 800.0 W, Luminous efficacy: 160.1 lm/W

Roadway

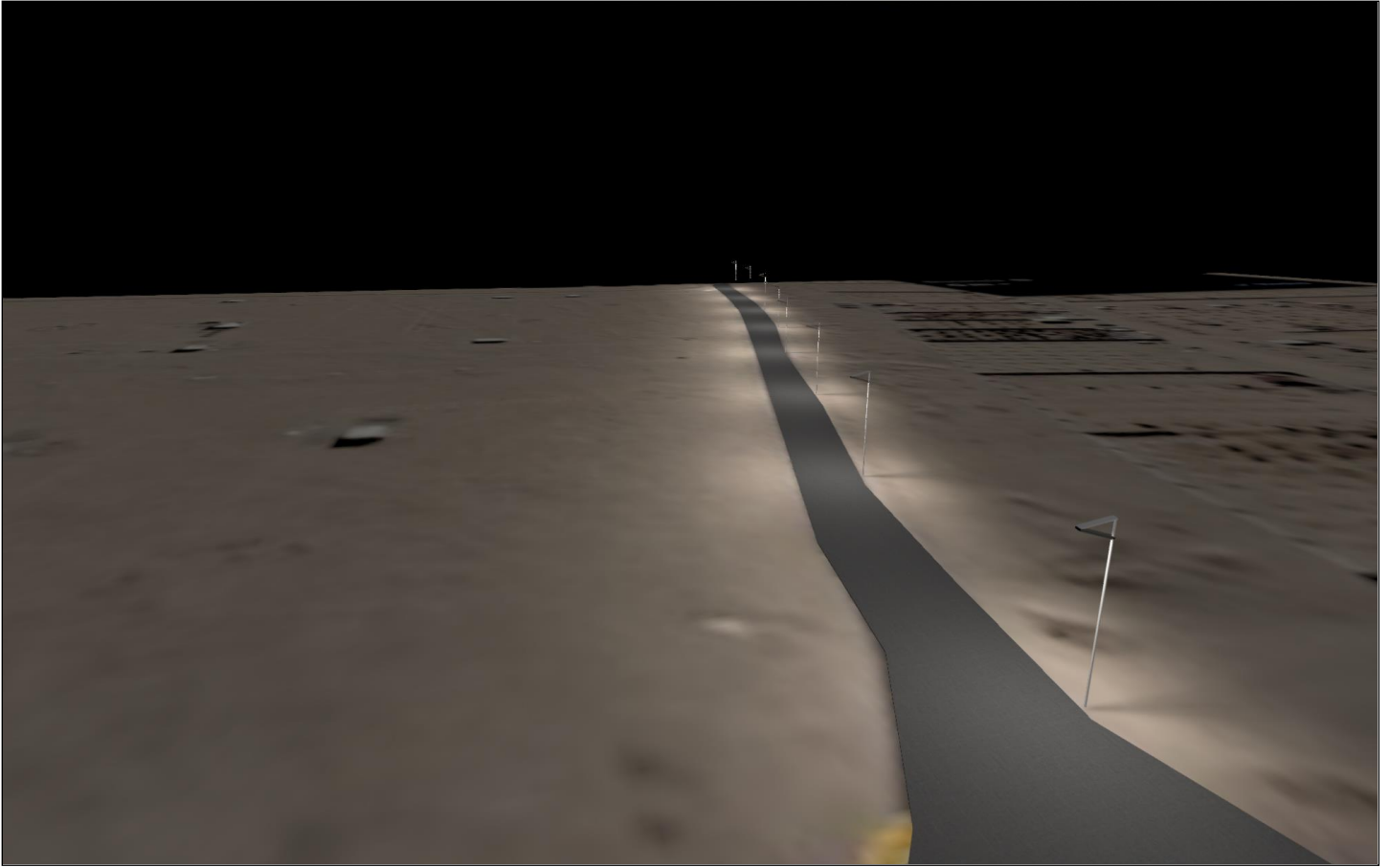
Site 1 (2)



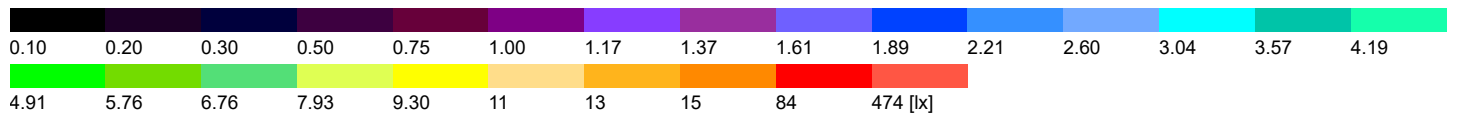
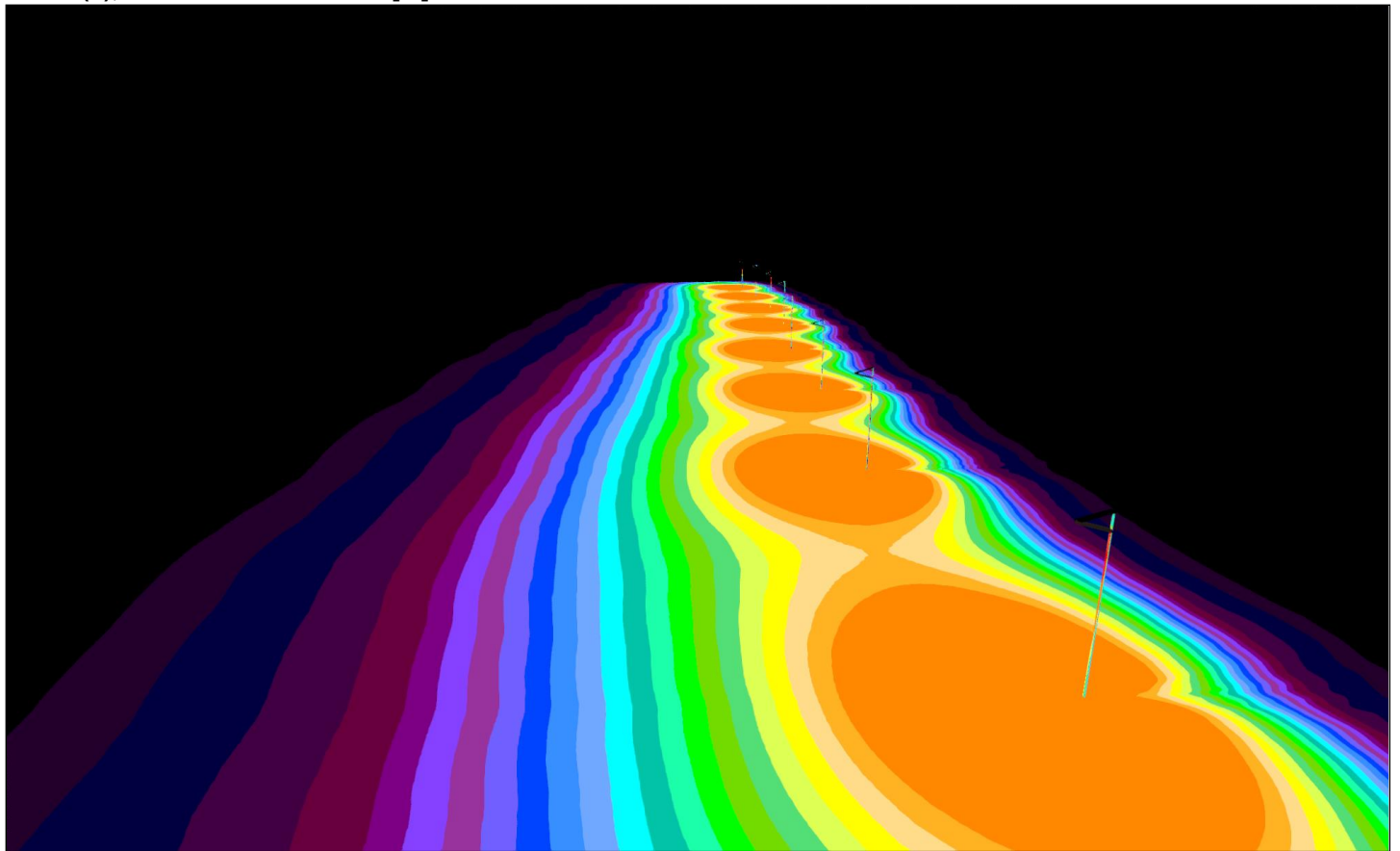
Site 1 (3), Illuminance values in [lx]



Site 1 (4)



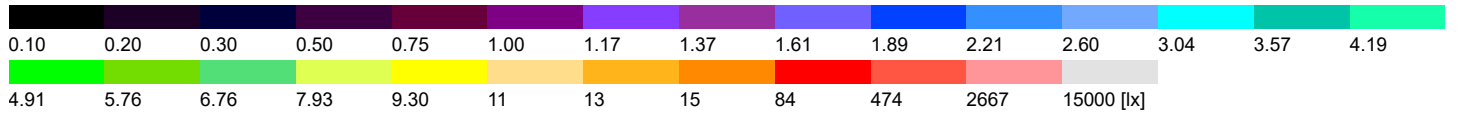
Site 1 (5), Illuminance values in [lx]



Site 1 (6), Illuminance values in [lx]



Scale: 1 : 3004

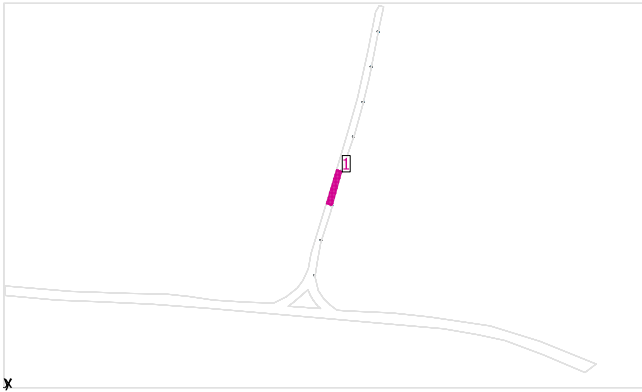


Site 1



DIALux 100W LED Solar Light

No.	X [m]	Y [m]	Mounting height [m]	Light loss factor
1	258.887	93.407	8.000	0.80
2	264.199	123.000	8.000	0.80
3	273.133	151.638	8.000	0.80
4	281.019	180.603	8.000	0.80
5	291.098	209.059	8.000	0.80
6	299.160	237.874	8.000	0.80
7	305.874	267.236	8.000	0.80
8	311.618	296.468	8.000	0.80

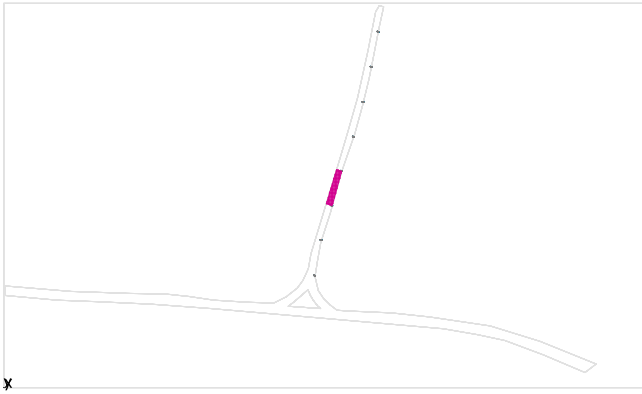
Site 1

Light loss factor: 0.80

General

Surface	Result	Average	Min	Max	Min/average	Min/max
1 Roadway	Perpendicular illuminance [lx] Height: 0.100 m	23.5	11.5	42.1	0.49	0.27

Roadway / Perpendicular illuminance



Light loss factor: 0.80

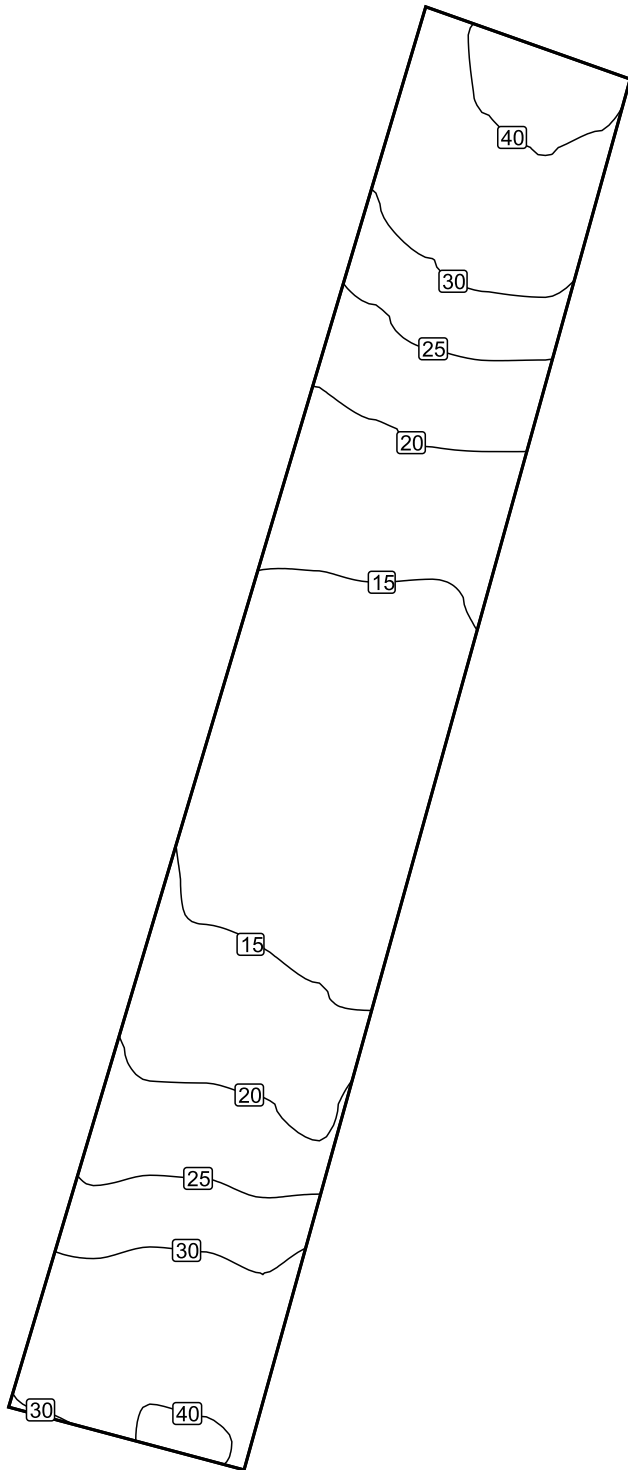
Roadway: Perpendicular illuminance (Grid)

Light scene: Light scene 1

Average: 23.5 lx, Min: 11.5 lx, Max: 42.1 lx, Min/average: 0.49, Min/max: 0.27

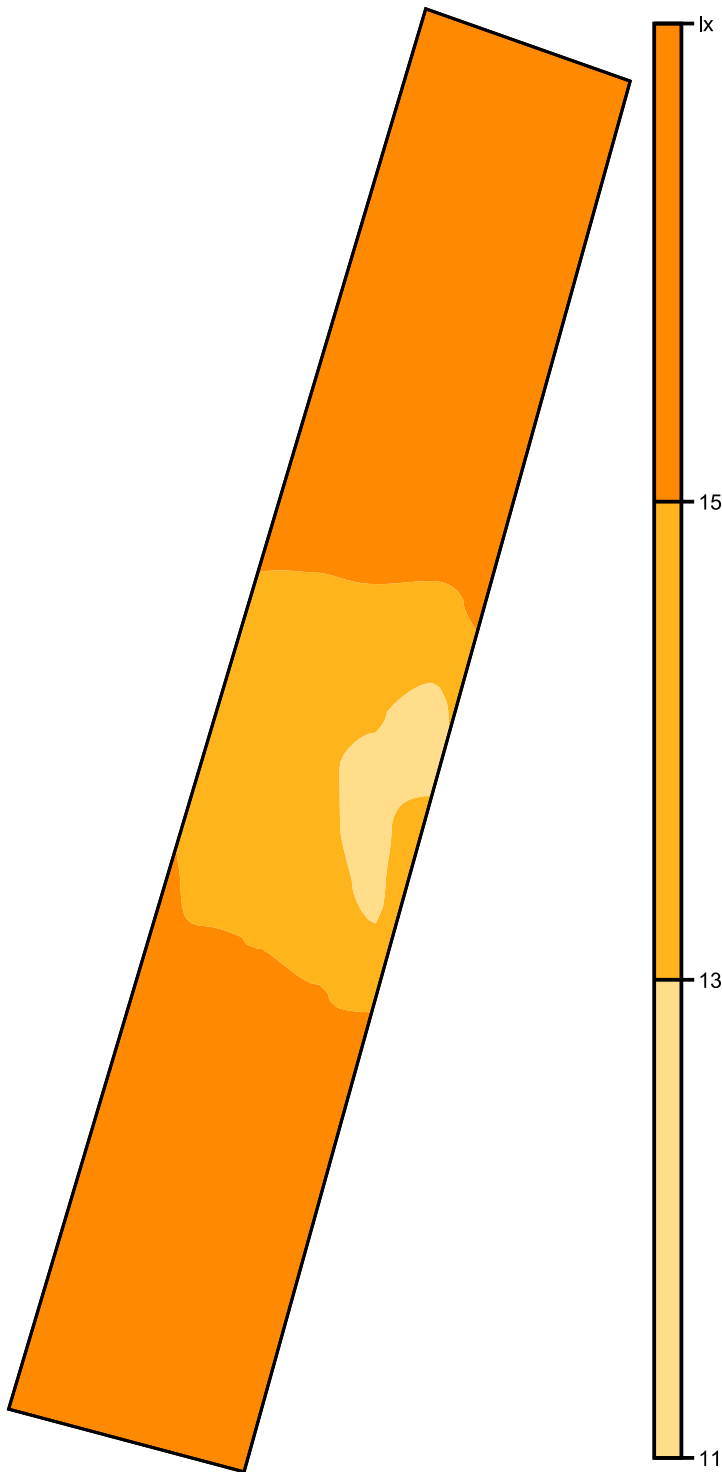
Height: 0.100 m

Isolines [lx]



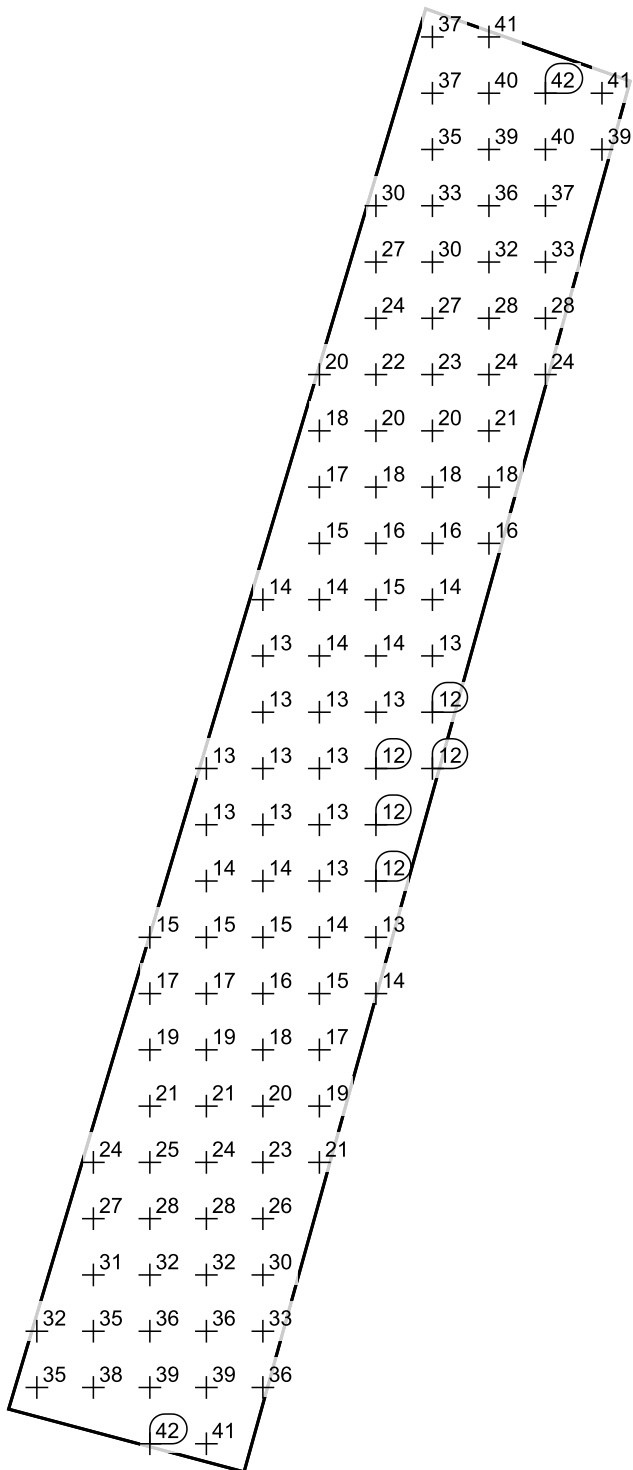
Scale: 1 : 154

False colors [lx]



Scale: 1 : 154

Value grid [lx]



Scale: 1 : 154