



Test Report

No.T51910220028JP

Date: MAR 12, 2019

Page 1 of 5

JIAN PLASTIC & METAL PRODUCTS LTD
NO.3-1, SOUTH GAOBU BLVD, GAOBU TOWN,
DONGGUAN CITY, GUANGDONG PROVINCE,
CHINA, ZIP CODE:523278

The following samples were submitted and identified by/on behalf of the client as:

SATIN SILVER PLATED

Buyer : WORLD WIDE
Manufacturer : CHINA
Country of Origin : CHINA
Country of Destination : WORLD WIDE
Requested Age Grading : 3+
Sample Receiving Date : MAR 06, 2019
Testing Period : MAR 06, 2019 TO MAR 12, 2019



SGS-CSTC Testing Technology Services Co., Ltd.
Shenzhen Branch Testing Center Hardlines

Unless otherwise agreed in writing, this document is issued by the Company subject to its General Conditions of Service printed overleaf, available on request or accessible at <http://www.sgs.com/en/Terms-and-Conditions.aspx> and, for electronic format documents, subject to Terms and Conditions for Electronic Documents at <http://www.sgs.com/en/Terms-and-Conditions/Terms-e-Documents.aspx>. Attention is drawn to the limitation of liability, indemnification and jurisdiction issues defined therein. Any holder of this document is advised that information contained hereon reflects the Company's findings at the time of its intervention only and within the limits of Client's instructions, if any. The Company's sole responsibility is to its Client and this document does not exonerate parties to a transaction from exercising all their rights and obligations under the transaction documents. This document cannot be reproduced except in full, without prior written approval of the Company. Any unauthorized alteration, forgery or falsification of the content or appearance of this document is unlawful and offenders may be prosecuted to the fullest extent of the law. Unless otherwise stated the results shown in this test report refer only to the sample(s) tested and such sample(s) are retained for 30 days only.

Attention: To check the authenticity of testing / inspection report & certificate, please contact us at telephone: (86-755) 8307 1443, or email: CN.Doccheck@sgs.com

SGS Bldg, No. 4, Jianghao Industrial Park, No. 430, Jihua Road, Banlan, Longgang District, Shenzhen, China 518129 t (86-755) 25328888 f (86-755) 83106190 www.sgs.com.cn
中国·深圳·龙岗区坂田吉华路430号江灏工业园4栋SGS大楼 邮编: 518129 t (86-755) 25328888 f (86-755) 83106190 e sgs.china@sgs.com



Test Report

No. T51910220028JP

Date: MAR 12, 2019

Page 2 of 5

Test Requested		Conclusion
1.	Directive 2009/48/EC and its amendment Council Directive (EU) 2017/738 – EN 71-3:2013 + A3:2018 – Migration of certain elements (All conclusive testing)	PASS
2.	ASTM F963-17 - Standard Consumer Safety Specification on Toy Safety – Heavy Elements content (Selected test items as specified by the applicant, please refer to test result page(s) for details)	--
	Heavy Elements content in substrate materials in submitted sample in accordance with ASTM F963-17 - Standard Consumer Safety Specification on Toy Safety, Clause 4.3.5.2	PASS
3.	Japan Toy Safety Standard: Part 3: 2016 Second edition (Selected test items as specified by the applicant, please refer to test result page(s) for details)	--
	Clause 1.11 Metals used for toy	PASS

***** FOR FURTHER DETAILS, PLEASE REFER TO THE FOLLOWING PAGE(S) *****

Signed for and on behalf of
SGS-CSTC Standards Technical
Services Co., Ltd. Shenzhen Branch Testing Center



T51910220028JP

Qu Ping, Kiky
Dept. Manager



SGS-CSTC Standards Technical Services Co., Ltd.
Shenzhen Branch Testing Center Hardlines

Unless otherwise agreed in writing, this document is issued by the Company subject to its General Conditions of Service printed overleaf, available on request or accessible at <http://www.sgs.com/en/Terms-and-Conditions.aspx> and, for electronic format documents, subject to Terms and Conditions for Electronic Documents at <http://www.sgs.com/en/Terms-and-Conditions/Terms-e-Documents.aspx>. Attention is drawn to the limitation of liability, indemnification and jurisdiction issues defined therein. Any holder of this document is advised that information contained hereon reflects the Company's findings at the time of its intervention only and within the limits of Client's instructions, if any. The Company's sole responsibility is to its Client and this document does not exonerate parties to a transaction from exercising all their rights and obligations under the transaction documents. This document cannot be reproduced except in full, without prior written approval of the Company. Any unauthorized alteration, forgery or falsification of the content or appearance of this document is unlawful and offenders may be prosecuted to the fullest extent of the law. Unless otherwise stated the results shown in this test report refer only to the sample(s) tested and such sample(s) are retained for 30 days only.

Attention: To check the authenticity of testing / inspection report & certificate, please contact us at telephone: (86-755) 8307 1443, or email: CN.Doccheck@sgs.com

SGS Bldg, No. 4, Jianghao Industrial Park, No. 430, Jihua Road, Banlan, Longgang District, Shenzhen, China 518129 t (86-755) 25328888 f (86-755) 83106190 www.sgs.com.cn
中国·深圳·龙岗区坂田吉华路430号江灏工业园4栋SGS大楼 邮编: 518129 t (86-755) 25328888 f (86-755) 83106190 e sgs.china@sgs.com

Results:
1. Directive 2009/48/EC and its amendment Council Directive (EU) 2017/738 – EN 71-3:2013 + A3:2018 – Migration of certain elements
Category III: Scraped-off toy material

Method: With reference to EN 71-3:2013 + A3:2018. Analysis of general elements was performed by ICP-OES. Chromium (III) was obtained by calculation, chromium (VI) was analyzed by IC-UV-Vis and organic tin was analyzed by GC-MS.

Test Item(s)	Result(s)	MDL	Permissible Limit
Specimen No.	1	--	--
Mass of trace amount (mg)	--	--	--
Soluble Aluminium (Al) (mg/kg)	ND	50	70000
Soluble Antimony (Sb) (mg/kg)	ND	10	560
Soluble Arsenic (As) (mg/kg)	ND	10	47
Soluble Barium (Ba) (mg/kg)	ND	50	18750
Soluble Boron (B) (mg/kg)	ND	50	15000
Soluble Cadmium (Cd) (mg/kg)	ND	5	17
Soluble Chromium (Cr) (mg/kg)	ND	0.15	--
Soluble Chromium (III) (Cr (III)) (mg/kg)	ND	1	460
Soluble Chromium (VI) (Cr (VI)) (mg/kg)	ND	0.12	0.2
Soluble Cobalt (Co) (mg/kg)	ND	10	130
Soluble Copper (Cu) (mg/kg)	ND	50	7700
Soluble Lead (Pb) (mg/kg)	ND	10	23
Soluble Manganese (Mn) (mg/kg)	ND	50	15000
Soluble Mercury (Hg) (mg/kg)	ND	10	94
Soluble Nickel (Ni) (mg/kg)	77	10	930
Soluble Selenium (Se) (mg/kg)	ND	10	460
Soluble Strontium (Sr) (mg/kg)	ND	50	56000
Soluble Tin (Sn) (mg/kg)	ND	3.0	180000
Soluble Organic Tin -- (mg/kg)	ND	--	12
Soluble Zinc (Zn) (mg/kg)	ND	50	46000

Specimen Description:

- Satin silver plated



Unless otherwise agreed in writing, this document is issued by the Company subject to its General Conditions of Service printed overleaf, available on request or accessible at <http://www.sgs.com/en/Terms-and-Conditions.aspx> and, for electronic format documents, subject to Terms and Conditions for Electronic Documents at <http://www.sgs.com/en/Terms-and-Conditions/Terms-e-Documents.aspx>. Attention is drawn to the limitation of liability, indemnification and jurisdiction issues defined therein. Any holder of this document is advised that information contained hereon reflects the Company's findings at the time of its intervention only and within the limits of Client's instructions, if any. The Company's sole responsibility is to its Client and this document does not exonerate parties to a transaction from exercising all their rights and obligations under the transaction documents. This document cannot be reproduced except in full, without prior written approval of the Company. Any unauthorized alteration, forgery or falsification of the content or appearance of this document is unlawful and offenders may be prosecuted to the fullest extent of the law. Unless otherwise stated the results shown in this test report refer only to the sample(s) tested and such sample(s) are retained for 30 days only.

Attention: To check the authenticity of testing / inspection report & certificate, please contact us at telephone: (86-755) 8307 1443, or email: CN.Doccheck@sgs.com

SGS-CSTC (Shenzhen) Technical Services Co., Ltd.
Shenzhen Branch Testing Center Hardlines

SGS Bldg, No. 4, Jianghao Industrial Park, No. 430, Jihua Road, Banlan, Longgang District, Shenzhen, China 518129 t (86-755) 25328888 f (86-755) 83106190 www.sgs.com.cn
中国·深圳·龙岗区坂田吉华路430号江灏工业园4栋SGS大楼 邮编: 518129 t (86-755) 25328888 f (86-755) 83106190 e sgs.china@sgs.com

- Note:
- mg/kg = milligram per kilogram
 - mg = milligram
 - ND = Not Detected (lower than MDL)
 - MDL = Method Detection Limit
 - 1% = 10000 mg/kg = 10000 ppm

2. ASTM F963-17, Clause 4.3.5.2 – Heavy Elements in Substrate Materials

Method: With reference to ASTM F963-17 Clause 8.3

Analysis was performed by Inductively Coupled Plasma Optical Emission Spectrometer (ICP-OES)

Soluble Heavy Metal Content

Test Item(s)				Pb	Sb	As	Ba	Cd	Cr	Hg	Se
MDL (ppm)				5	5	2.5	10	5	5	5	10
Migration Limit (ppm) -- Other Than Modeling Clays				90	60	25	1000	75	60	60	500
Migration Limit (ppm) -- Modeling Clays				90	60	25	250	50	25	25	500
Specimen No.	Alias No.	Tracing No.	Mass of trace amount (mg)	Adjusted Migration Result(s) (ppm)							
1	2	1	/	ND	ND	ND	ND	ND	ND	ND	ND

Specimen Description:

1. Satin silver plated

- Note:
- ppm = parts per million
 - 1% = 10000 mg/kg = 10000 ppm = 10000 µg/g
 - ND = Not Detected (lower than MDL)
 - MDL = Method Detection Limit
 - Migration results of eight elements shown are of the adjusted analytical results



Unless otherwise agreed in writing, this document is issued by the Company subject to its General Conditions of Service printed overleaf, available on request or accessible at <http://www.sgs.com/en/Terms-and-Conditions.aspx> and, for electronic format documents, subject to Terms and Conditions for Electronic Documents at <http://www.sgs.com/en/Terms-and-Conditions/Terms-e-Documents.aspx>. Attention is drawn to the limitation of liability, indemnification and jurisdiction issues defined therein. Any holder of this document is advised that information contained hereon reflects the Company's findings at the time of its intervention only and within the limits of Client's instructions, if any. The Company's sole responsibility is to its Client and this document does not exonerate parties to a transaction from exercising all their rights and obligations under the transaction documents. This document cannot be reproduced except in full, without prior written approval of the Company. Any unauthorized alteration, forgery or falsification of the content or appearance of this document is unlawful and offenders may be prosecuted to the fullest extent of the law. Unless otherwise stated the results shown in this test report refer only to the sample(s) tested and such sample(s) are retained for 30 days only.

Attention: To check the authenticity of testing / inspection report & certificate, please contact us at telephone: (86-755) 8307 1443, or email: CN.Doccheck@sgs.com

SGS Bldg, No. 4, Jianghao Industrial Park, No. 430, Jihua Road, Banlan, Longgang District, Shenzhen, China 518129 t (86-755) 25328888 f (86-755) 83106190 www.sgsgroup.com.cn
 中国·深圳·龙岗区坂田吉华路430号江灏工业园4栋SGS大楼 邮编: 518129 t (86-755) 25328888 f (86-755) 83106190 e sgs.china@sgs.com

3. Japan Toy Safety Standard: Part 3: 2016 Second edition

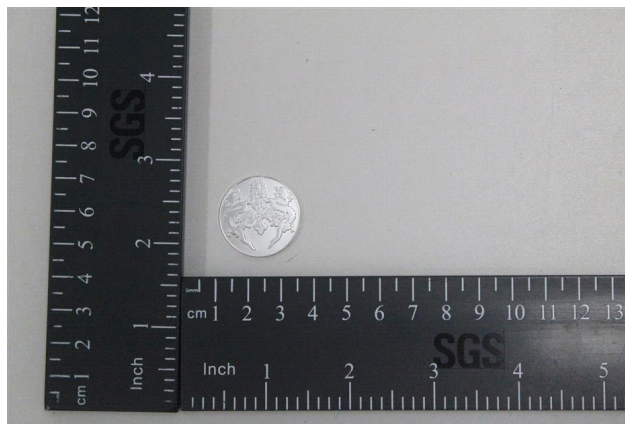
Method: As specified in Japan Toy Safety Standard: Part 3: 2016 Second edition

Clause 1.11 Metals used for toy (neither painted nor covered)

Test Item	Pb
MDL (mg/kg)	5
Limit (mg/kg)	90
Specimen Description	Adjusted Migration Result(s) (mg/kg)
1. Satin silver plated	ND

- Note:
- mg/kg = milligram per kilogram
 - MDL = Method Detection Limit
 - ND = Not Detected (lower than MDL)
 - Results shown are of the adjusted analytical result

Sample Photo:



SGS authenticate the photo on original report only

*** End of Report ***



Unless otherwise agreed in writing, this document is issued by the Company subject to its General Conditions of Service printed overleaf, available on request or accessible at <http://www.sgs.com/en/Terms-and-Conditions.aspx> and, for electronic format documents, subject to Terms and Conditions for Electronic Documents at <http://www.sgs.com/en/Terms-and-Conditions/Terms-e-Documents.aspx>. Attention is drawn to the limitation of liability, indemnification and jurisdiction issues defined therein. Any holder of this document is advised that information contained hereon reflects the Company's findings at the time of its intervention only and within the limits of Client's instructions, if any. The Company's sole responsibility is to its Client and this document does not exonerate parties to a transaction from exercising all their rights and obligations under the transaction documents. This document cannot be reproduced except in full, without prior written approval of the Company. Any unauthorized alteration, forgery or falsification of the content or appearance of this document is unlawful and offenders may be prosecuted to the fullest extent of the law. Unless otherwise stated the results shown in this test report refer only to the sample(s) tested and such sample(s) are retained for 30 days only.

Attention: To check the authenticity of testing / inspection report & certificate, please contact us at telephone: (86-755) 8307 1443, or email: CN.Doccheck@sgs.com

SGS-CSTC 检验检测专用章
Inspection & Testing Services
Shenzhen Branch Testing Center Hardlines

SGS Bldg, No. 4, Jianghao Industrial Park, No. 430, Jihua Road, Banlan, Longgang District, Shenzhen, China 518129 t (86-755) 25328888 f (86-755) 83106190 www.sgsgroup.com.cn
中国·深圳·龙岗区坂田吉华路430号江灏工业园4栋SGS大楼 邮编: 518129 t (86-755) 25328888 f (86-755) 83106190 e sgs.china@sgs.com