

LED WALL WASHER

ITEM NO.: LWW-2 series

INSTRUCTION OF LED WALL WASHER / LWW-2

This product is mainly used for decorating and highlighting in building frame, garden, etc. It can work in independent mode and DMX mode, which can generate various color changing effects, such as flashing, fading, steady, seven color jumping synchronously etc. DMX256 class gray degree dimmer, DMX programable (thousands of effects. available if many lights being connected together).

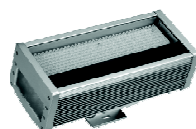
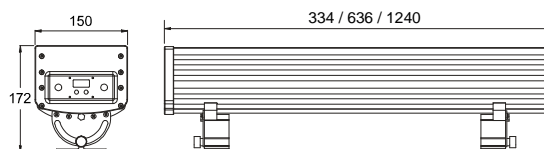
A. Structure and Specification:

Size: L334/ L636 / L1240 * W150 * H172mm

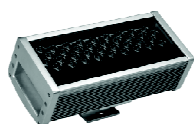
Material : Aluminum alloy

Weight: 5kgs(L334), 8.5kgs(L636), 15kgs(L1240)

Rotary angle: 150°



LWW-2-360



LWW-2-36P



LWW-2-720



LWW-2-72P



LWW-2-1440



LWW-2-144P

B. Technical Parameters

Input Voltage: 120V / 240V AC
 Operating Voltage: 12V DC / 24V DC(for power LED)
 Protection Rating: IP65
 Operating Temperature: -20°C ~ 40°C

Model No.	LED Quantity	Color	Power Consumption	Beam Angel	Project Distance	✓
LWW-2-360	360 LED	R-120, G-120, B-120	31Watts	15°	10m	
LWW-2-720	720 LED	R-240, G-240, B-240	58Watts	15°	10m	
LWW-2-1440	1440 LED	R-480, G-480, B-480	112Watts	15°	10m	
LWW-2-36P	36 Power LED	R-12, G-12, B-12	55Watts	15°/30°/45°	20m/ 10m/ 7m	
LWW-2-72P	72 Power LED	R-24, G-24, B-24	110Watts	15°/30°/45°	20m/ 10m/ 7m	
LWW-2-144P	144 Power LED	R-48, G-48, B-48	220Watts	15°/30°/45°	20m/ 10m/ 7m	

C. Working Mode:

(1) Independent mode; (2) DMX mode; (3) Master/Slave mode

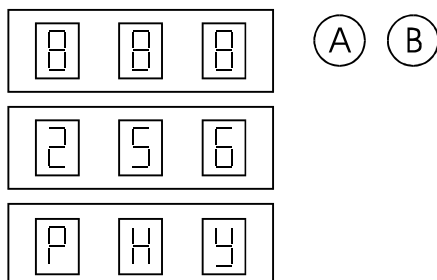
LED WALL WASHER

ITEM NO.: LWW-2 series

D. Function & Setup

D-1 Independent mode

After pressing **A** four times (the first three times is the setup on DMX address) or **B** directly light enter into independent mode; the digital LEDs shows **PXY**, press **A** once, active digital LEDs moves backward, you can choose function via **X** and parameter via **Y**; Press **B**, the corresponding flash digital LED increase one bit (range: 1~9);



X value	Y value
1-static red	1~9 class gray degree
2-static green	1~9 class gray degree
3-static yellow	1~9 class gray degree
4-static blue	1~9 class gray degree
5-static purple	1~9 class gray degree
6-static cyan	1~9 class gray degree
7-static white	1~9 class gray degree
8-multicolor changing	1~9 class speed
9-single fading	1~9 class speed
A-multicolor fading	1~9 class speed
b-multicolor flashing	1~9 class speed
C-autorun	1~9 times circle

D-2 DMX mode

1. DMX Addressing

When the digital LED is not flashing, press **A**, digital LED begin to flash, press **A** once. active digital LEDs moves backward, you can start to edit the second digital LED; Press **B**, the corresponding flash digital LED increase one bit (the values between 1 to 9);

2. DMX Channel instruction-3 Channels available as sheet:

CHANNEL 1		CHANNEL 2		CHANNEL 3	
Data	Function	Data	Function	Data	Function
0~255	Brightness of Red	0~255	Brightness of Green	0~255	Brightness of Blue

***Enter or quit DMX mode automatically once detecting valid signal!!!

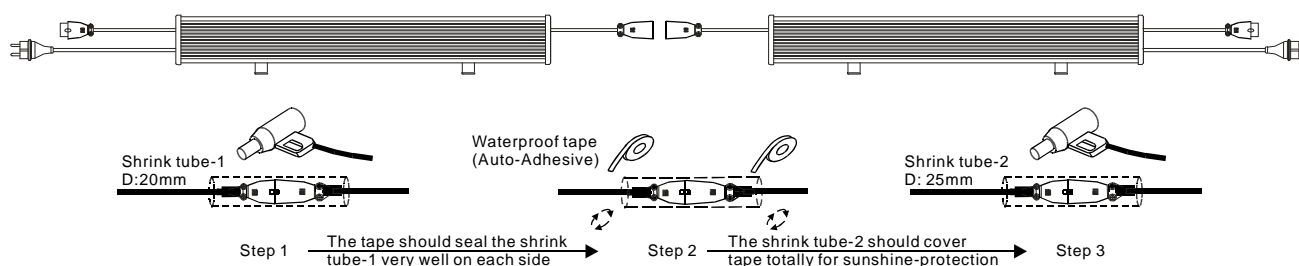
D-3 Master/Slave mode

Choose any one light as the master for attaining auto online function, the operations are as below: firstly, set the address of master as 001, others are set as slave (address can be any one except 001); Change function of the master (001) light, then all lights will work synchronously;

E. Waterproof treatment

The signal output connector XL-3R of the last fixture (maximum 30 fixtures) of each series must be sealed with a 20mm thermal shrinking tube(-1), blow and shrink it with a hair driers; thence wrapped with waterproof tape (auto-adhesive, please refer to below instruction for operation) on both side; Blow the second 25mm shrink tube(-2) at last so as to protect waterproof tape under sunshine and guarantee the waterproof validity.

*** Power connector should be treated in the same way if available!!!



Caution:

1. Do not plug them into power when the product is still in package;
2. Don't use anything to cover the fixture during application;
3. Don't use this product in close environment;
4. If this product appears to be damaged, do not attempt any repair, please contact your dealer.

Warning:

- * Neglect on action of the above treatment will lead to failure of waterproof and proper working of the lights!!!
- * Make sure the ground connection well avoid electric shock, due to metal housing.